



## SPTLC1 Polyclonal Antibody

Catalog_no :	AT5232
Applications :	WB,IHC-p,ELISA
Reactivity :	Human,Mouse,Rat
Category :	抗原抗体
Size :	100µg/50µg/20µg
Gene_name :	SPTLC1
Protein_name :	Serine palmitoyltransferase 1
Humangene_id :	<a href="#">10558</a>
Humanswissprot_no :	<a href="#">O15269</a>
Mousegene_id :	<a href="#">268656</a>
Mouseswissprot_no :	<a href="#">O35704</a>
Immunogen :	Synthesized peptide derived from SPTLC1 . at AA range: 411-460
Specificity :	SPTLC1 Polyclonal Antibody detects endogenous levels of SPTLC1 protein.
Formulation :	Liquid in PBS containing 50% glycerol, 0.5% BSA and 0.02% sodium azide.
Source :	Rabbit
Dilution :	Western Blot: 1/500 - 1/2000. IHC-p: 1:100-300 ELISA: 1/20000. Not yet tested in other applications.
Purification :	The antibody was affinity-purified from rabbit antiserum by affinity-chromatography using epitope-specific immunogen.
Concentration :	1 mg/ml
Storage_stability :	-20°C/1 year
Msds :	<a href="#">MSDS_Antibody.pdf</a>
Other_name :	SPTLC1; LCB1; Serine palmitoyltransferase 1; Long chain base biosynthesis protein 1; LCB 1; Serine-palmitoyl-CoA transferase 1; SPT 1; SPT1
Molecular Weight :	52KD

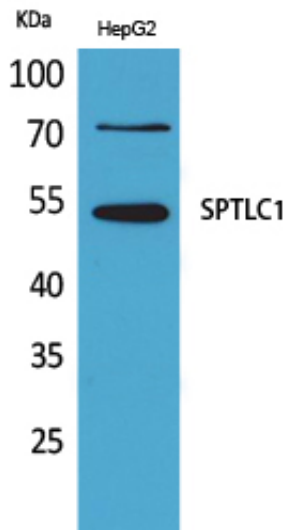


**专注二抗产品**

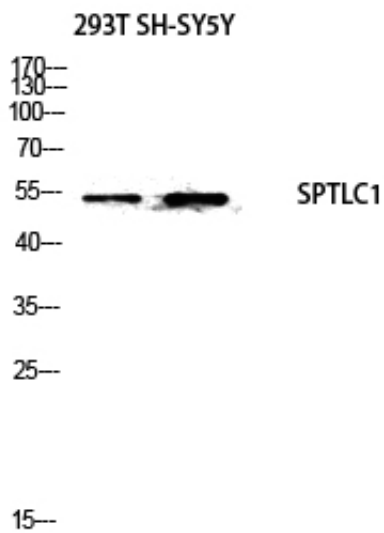
Biodragon旗下品牌

---

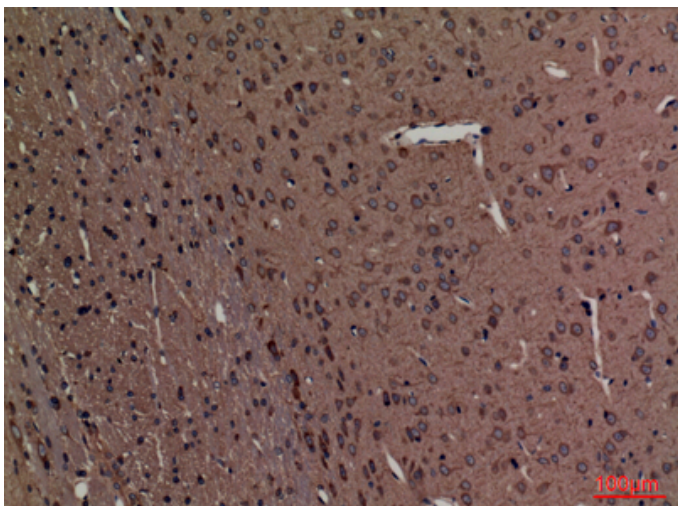
## Product Images



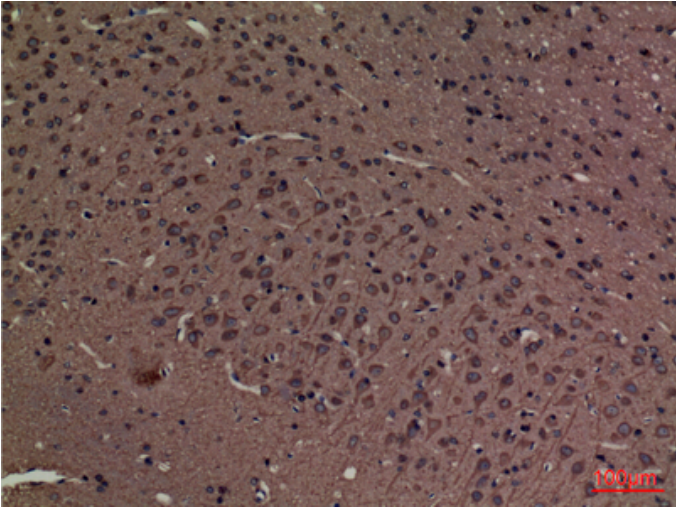
Western Blot analysis of HepG2 cells using SPTLC1 Polyclonal Antibody. Antibody was diluted at 1:500. Secondary antibody was diluted at 1:20000



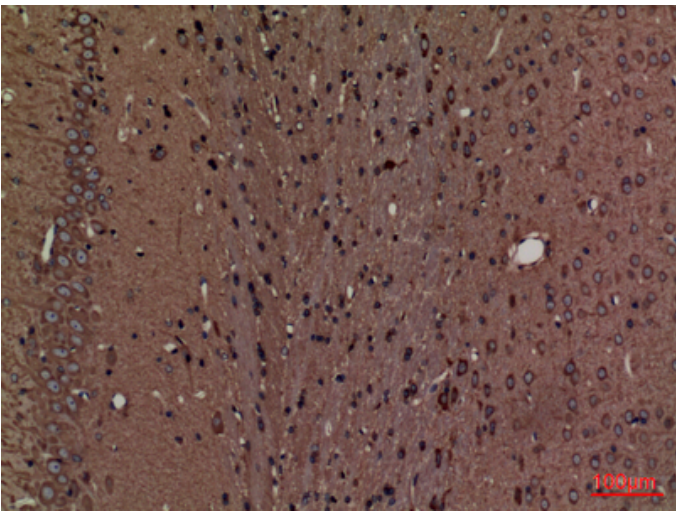
Western blot analysis of 293T SH-SY5Y cells using SPTLC1 antibody. Antibody was diluted at 1:500. Secondary antibody was diluted at 1:20000



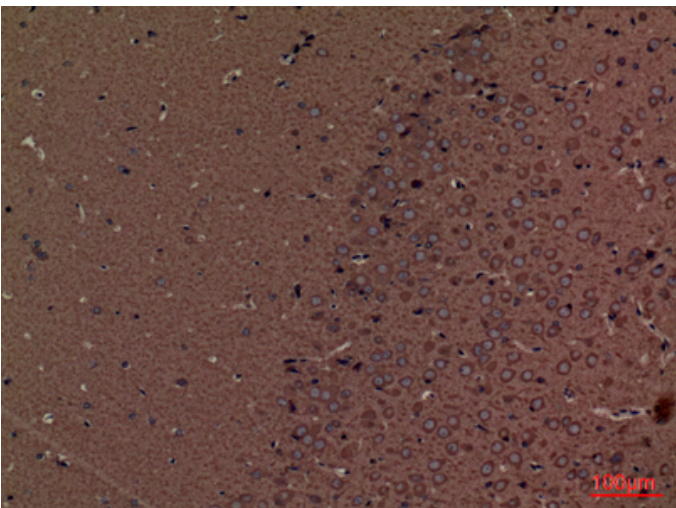
Immunohistochemical analysis of paraffin-embedded rat brain, antibody was diluted at 1:100



Immunohistochemical analysis of paraffin-embedded rat-brain, antibody was diluted at 1:100



Immunohistochemical analysis of paraffin-embedded rat-brain, antibody was diluted at 1:100



Immunohistochemical analysis of paraffin-embedded mouse-brain, antibody was diluted at 1:100