

LASP-1 Polyclonal Antibody

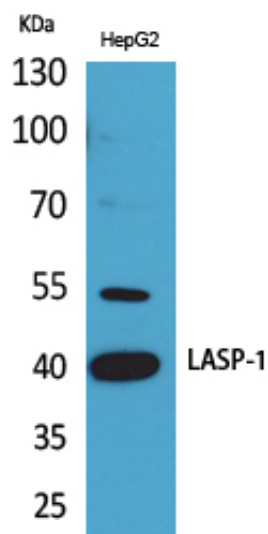
Catalog_no :	AT5234
Applications :	WB,ELISA
Reactivity :	Human,Mouse,Rat
Category :	抗原抗体
Size :	100µg/50µg/20µg
Gene_name :	LASP1
Protein_name :	LIM and SH3 domain protein 1
Humangene_id :	3927
Humanswissprot_no :	Q14847
Mousegene_id :	16796
Mouseswissprot_no :	Q61792
Ratgene_id :	29278
Ratswissprot_no :	Q99MZ8
Immunogen :	The antiserum was produced against synthesized peptide derived from the Internal region of human LASP1. AA range:51-100
Specificity :	LASP-1 Polyclonal Antibody detects endogenous levels of LASP-1 protein.
Formulation :	Liquid in PBS containing 50% glycerol, 0.5% BSA and 0.02% sodium azide.
Source :	Rabbit
Dilution :	Western Blot: 1/500 - 1/2000. ELISA: 1/20000. Not yet tested in other applications.
Purification :	The antibody was affinity-purified from rabbit antiserum by affinity-chromatography using epitope-specific immunogen.
Concentration :	1 mg/ml
Storage_stability :	-20°C/1 year
Msds :	MSDS_Antibody.pdf



Other_name : LASP1; MLN50; LIM and SH3 domain protein 1; LASP-1; Metastatic lymph node gene 50 protein; MLN 50

Molecular Weight : 28KD

Product Images



Western Blot analysis of HepG2 cells using LASP-1 Polyclonal Antibody. Antibody was diluted at 1:500. Secondary antibody was diluted at 1:20000