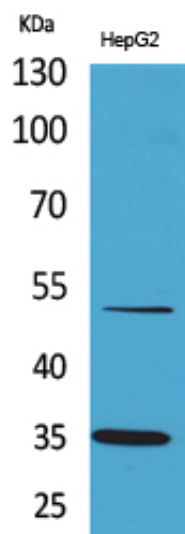




## TFPI Polyclonal Antibody

Catalog_no :	AT5235
Applications :	WB,ELISA
Reactivity :	Human
Category :	抗原抗体
Size :	100µg/50µg/20µg
Gene_name :	TFPI
Protein_name :	Tissue factor pathway inhibitor
Humangene_id :	<a href="#">7035</a>
Humanswissprot_no :	<a href="#">P10646</a>
Immunogen :	The antiserum was produced against synthesized peptide derived from the C-terminal region of human TFPI. AA range:251-300
Specificity :	TFPI Polyclonal Antibody detects endogenous levels of TFPI protein.
Formulation :	Liquid in PBS containing 50% glycerol, 0.5% BSA and 0.02% sodium azide.
Source :	Rabbit
Dilution :	Western Blot: 1/500 - 1/2000. ELISA: 1/20000. Not yet tested in other applications.
Purification :	The antibody was affinity-purified from rabbit antiserum by affinity-chromatography using epitope-specific immunogen.
Concentration :	1 mg/ml
Storage_stability :	-20°C/1 year
Msds :	<a href="#">MSDS_Antibody.pdf</a>
Other_name :	TFPI; LACI; TFPI1; Tissue factor pathway inhibitor; TFPI; Extrinsic pathway inhibitor; EPI; Lipoprotein-associated coagulation inhibitor; LACI
Molecular Weight :	34KD

## Product Images



Western Blot analysis of HepG2 cells using TFPI Polyclonal Antibody.. Secondary antibody was diluted at 1:20000