

PEPCK-C Polyclonal Antibody

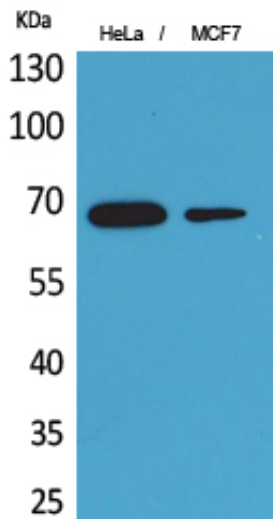
Catalog_no :	<u>AT5236</u>
Applications :	<u>WB,IHC-p,ELISA</u>
Reactivity :	<u>Human,Mouse,Rat</u>
Category :	<u>抗原抗体</u>
Size :	<u>100µg/50µg/20µg</u>
Gene_name :	<u>PCK1</u>
Protein_name :	<u>Phosphoenolpyruvate carboxykinase cytosolic [GTP]</u>
Humangene_id	<u>5105</u>
:	<u></u>
Humanswissprot	<u>P35558</u>
_no :	<u></u>
Mousegene_id :	<u>18534</u>
Mouseswissprot	<u>Q9Z2V4</u>
_no :	<u></u>
Ratgene_id :	<u>362282</u>
Ratswissprot_no	<u>P07379</u>
:	<u></u>
Immunogen :	<u>The antiserum was produced against synthesized peptide derived from the Internal region of human PCK1. AA range:491-540</u>
Specificity :	<u>PEPCK-C Polyclonal Antibody detects endogenous levels of PEPCK-C protein.</u>
Formulation :	<u>Liquid in PBS containing 50% glycerol, 0.5% BSA and 0.02% sodium azide.</u>
Source :	<u>Rabbit</u>
Dilution :	<u>Western Blot: 1/500 - 1/2000. IHC-p: 1:100-300 ELISA: 1/20000. Not yet tested in other applications.</u>
Purification :	<u>The antibody was affinity-purified from rabbit antiserum by affinity-chromatography using epitope-specific immunogen.</u>
Concentration :	<u>1 mg/ml</u>
Storage_stability	<u>-20°C/1 year</u>
:	<u></u>
Msds :	<u>MSDS_Antibody.pdf</u>



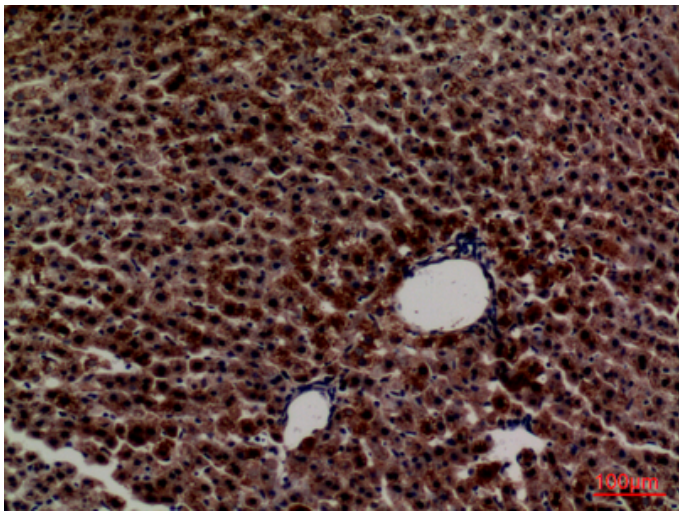
Other_name : PCK1; PEPCK1; Phosphoenolpyruvate carboxykinase, cytosolic [GTP]; PEPCK-C;
Phosphoenolpyruvate carboxylase

Molecular Weight : 65KD

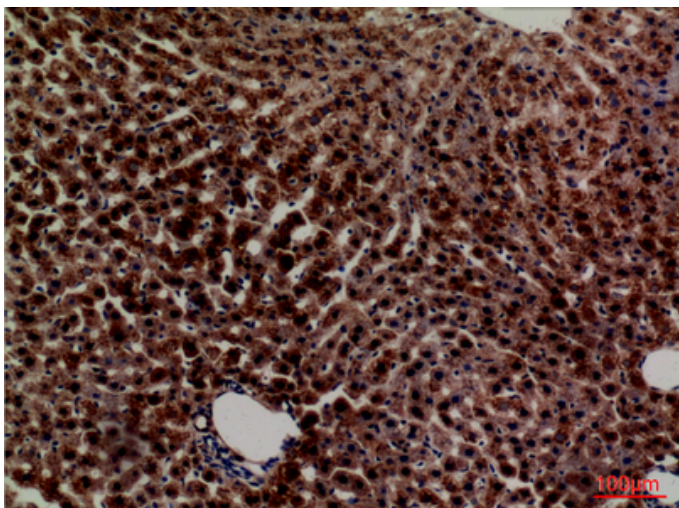
Product Images



Western Blot analysis of HeLa, MCF7 cells using PEPCK-C Polyclonal Antibody.. Secondary antibody was diluted at 1:20000



Immunohistochemical analysis of paraffin-embedded rat-liver, antibody was diluted at 1:100



Immunohistochemical analysis of paraffin-embedded rat-liver, antibody was diluted at 1:100

Immunohistochemical analysis of paraffin-embedded mouse-liver, antibody was diluted at 1:100

