

## Transferrin Polyclonal Antibody

Catalog_no :	AT5237
Applications :	WB,IHC-p,ELISA
Reactivity :	Human,Mouse,Rat
Category :	抗原抗体
Size :	100µg/50µg/20µg
Gene_name :	TF
Protein_name :	Serotransferrin
Humangene_id :	<a href="#">7018</a>
Humanswissprot_no :	<a href="#">P02787</a>
Mousegene_id :	<a href="#">22041</a>
Mouseswissprot_no :	<a href="#">Q92111</a>
Ratgene_id :	<a href="#">24825</a>
Ratswissprot_no :	<a href="#">P12346</a>
Immunogen :	The antiserum was produced against synthesized peptide derived from the C-terminal region of human TF. AA range:611-660
Specificity :	Transferrin Polyclonal Antibody detects endogenous levels of Transferrin protein.
Formulation :	Liquid in PBS containing 50% glycerol, 0.5% BSA and 0.02% sodium azide.
Source :	Rabbit
Dilution :	Western Blot: 1/500 - 1/2000. IHC-p: 1:100-300 ELISA: 1/20000. Not yet tested in other applications.
Purification :	The antibody was affinity-purified from rabbit antiserum by affinity-chromatography using epitope-specific immunogen.
Concentration :	1 mg/ml
Storage_stability :	-20°C/1 year
Msds :	MSDS_Antibody.pdf



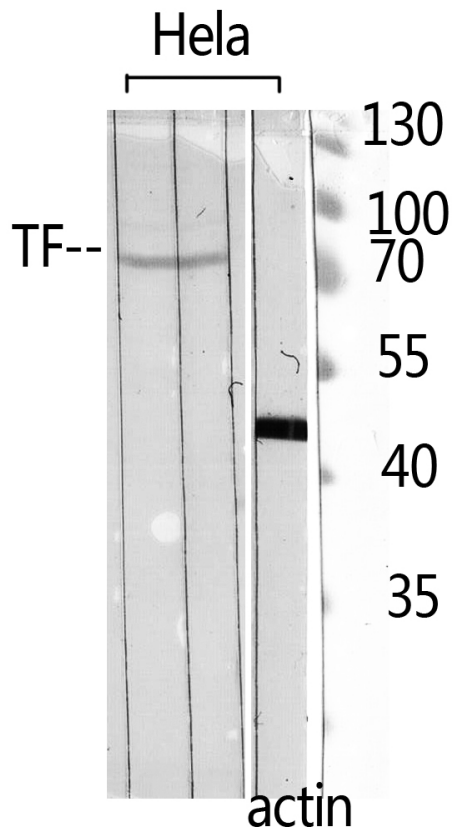
Other\_name : TF; Serotransferrin; Transferrin; Beta-1 metal-binding globulin; Siderophilin

Molecular Weight : 77KD

## Product Images



Western Blot analysis of K562 cells using Transferrin Polyclonal Antibody. Antibody was diluted at 1:500. Secondary antibody was diluted at 1:20000



Western Blot analysis of HELA using TF Polyclonal Antibody. Antibody was diluted at 1:500. Secondary antibody was diluted at 1:20000

Immunohistochemical analysis of paraffin-embedded rat-liver, antibody was diluted at 1:100

