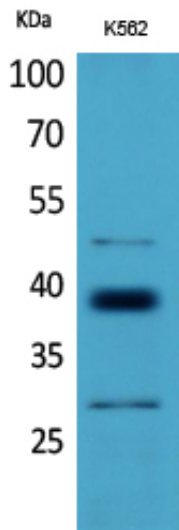




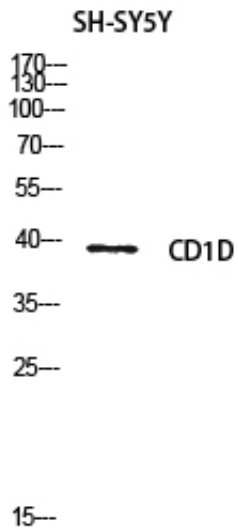
CD1D Polyclonal Antibody

Catalog_no :	AT5239
Applications :	WB,IHC-p,ELISA
Reactivity :	Human
Category :	抗原抗体
Size :	100µg/50µg/20µg
Gene_name :	CD1D
Protein_name :	Antigen-presenting glycoprotein CD1d
Humangene_id :	912
Humanswissprot_no :	P15813
Immunogen :	Synthesized peptide derived from Antigen-presenting glycoprotein CD1d at AA range: 161-210
Specificity :	CD1D Polyclonal Antibody detects endogenous levels of CD1D protein.
Formulation :	Liquid in PBS containing 50% glycerol, 0.5% BSA and 0.02% sodium azide.
Source :	Rabbit
Dilution :	Western Blot: 1/500 - 1/2000. IHC-p: 1:100-300 ELISA: 1/20000. Not yet tested in other applications.
Purification :	The antibody was affinity-purified from rabbit antiserum by affinity-chromatography using epitope-specific immunogen.
Concentration :	1 mg/ml
Storage_stability :	-20°C/1 year
Msds :	MSDS_Antibody.pdf
Other_name :	CD1D; Antigen-presenting glycoprotein CD1d; R3G1; CD1d
Molecular Weight :	37KD

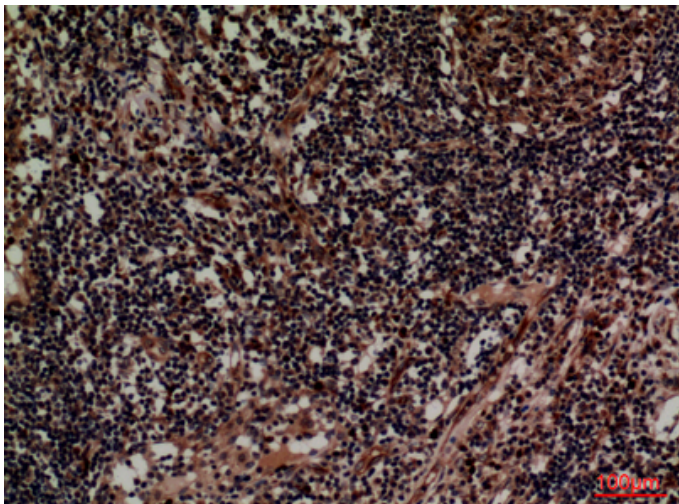
Product Images



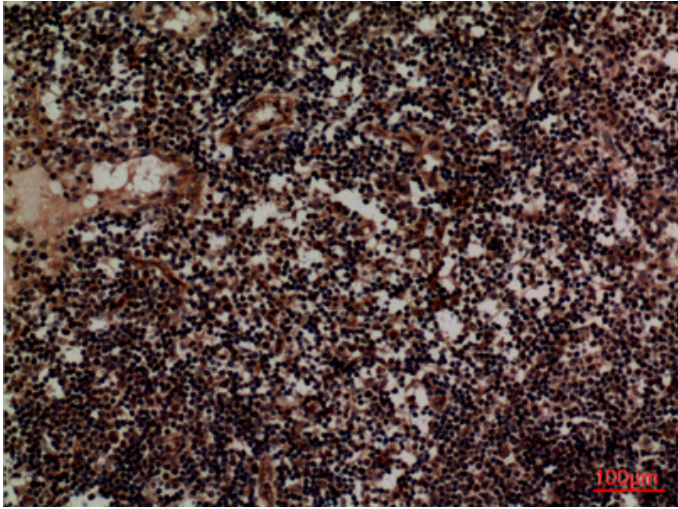
Western Blot analysis of K562 cells using CD1D Polyclonal Antibody. Antibody was diluted at 1:500. Secondary antibody was diluted at 1:20000



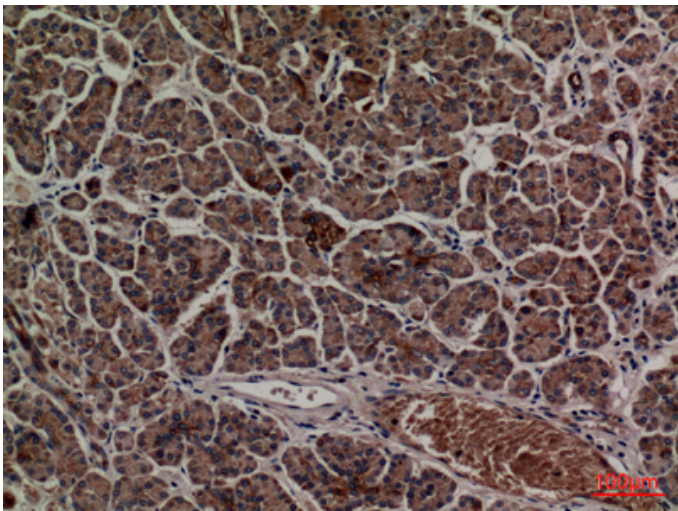
Western blot analysis of SH-SY5Y lysis using CD1D antibody. Antibody was diluted at 1:500. Secondary antibody was diluted at 1:20000



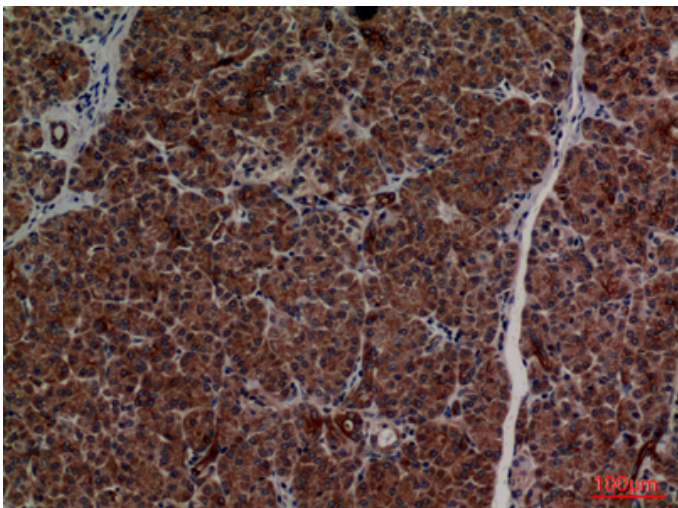
Immunohistochemical analysis of paraffin-embedded human-lymph, antibody was diluted at 1:100



Immunohistochemical analysis of paraffin-embedded human-lymph, antibody was diluted at 1:100



Immunohistochemical analysis of paraffin-embedded human-pancreas, antibody was diluted at 1:100



Immunohistochemical analysis of paraffin-embedded human-pancreas, antibody was diluted at 1:100