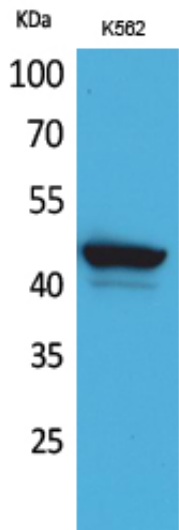


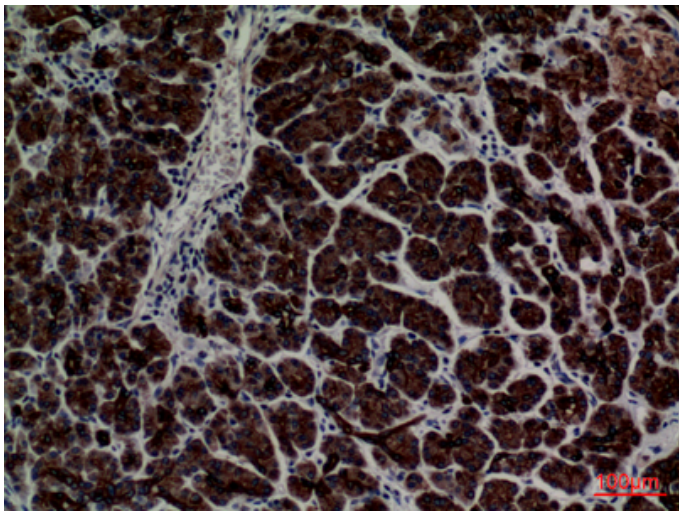
CD1E Polyclonal Antibody

Catalog_no :	AT5240
Applications :	WB,IHC-p,ELISA
Reactivity :	Human
Category :	抗原抗体
Size :	100µg/50µg/20µg
Gene_name :	CD1E
Protein_name :	T-cell surface glycoprotein CD1e membrane-associated
Humangene_id :	913
Humanswissprot_no :	P15812
Immunogen :	The antiserum was produced against synthesized peptide derived from the C-terminal region of human CD1E. AA range:321-370
Specificity :	CD1E Polyclonal Antibody detects endogenous levels of CD1E protein.
Formulation :	Liquid in PBS containing 50% glycerol, 0.5% BSA and 0.02% sodium azide.
Source :	Rabbit
Dilution :	Western Blot: 1/500 - 1/2000. IHC-p: 1:100-300 ELISA: 1/20000. Not yet tested in other applications.
Purification :	The antibody was affinity-purified from rabbit antiserum by affinity-chromatography using epitope-specific immunogen.
Concentration :	1 mg/ml
Storage_stability :	-20°C/1 year
Msds :	MSDS_Antibody.pdf
Other_name :	CD1E; T-cell surface glycoprotein CD1e, membrane-associated; hCD1e; R2G1; CD1e
Molecular Weight :	42KD

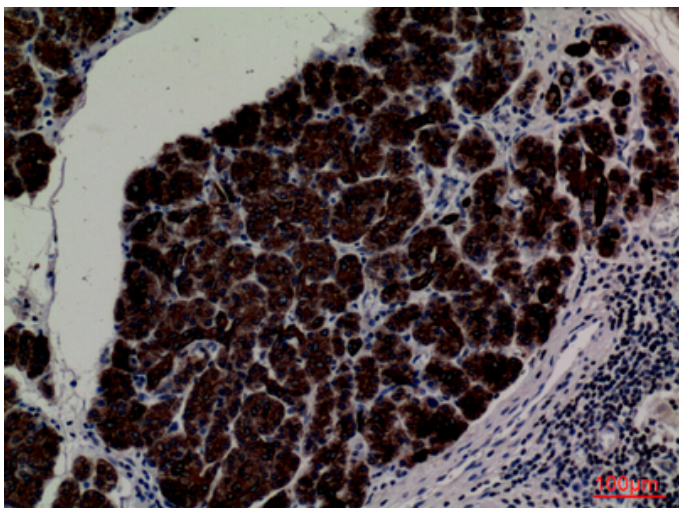
Product Images



Western Blot analysis of K562 cells using CD1E Polyclonal Antibody.. Secondary antibody was diluted at 1:20000



Immunohistochemical analysis of paraffin-embedded human-pancreas, antibody was diluted at 1:100



Immunohistochemical analysis of paraffin-embedded human-pancreas, antibody was diluted at 1:100

Immunohistochemical analysis of paraffin-embedded human-pancreas, antibody was diluted at 1:100

