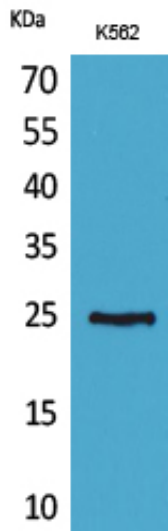




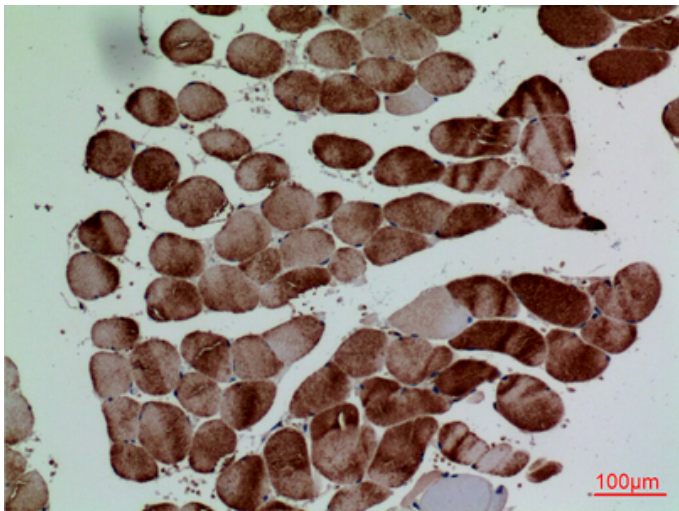
CD7 Polyclonal Antibody

Catalog_no :	AT5242
Applications :	WB,IHC-p,ELISA
Reactivity :	Human
Category :	抗原抗体
Size :	100µg/50µg/20µg
Gene_name :	CD7
Protein_name :	T-cell antigen CD7
Humangene_id :	924
Humanswissprot_no :	P09564
Immunogen :	The antiserum was produced against synthesized peptide derived from the Internal region of human CD7. AA range:51-100
Specificity :	CD7 Polyclonal Antibody detects endogenous levels of CD7 protein.
Formulation :	Liquid in PBS containing 50% glycerol, 0.5% BSA and 0.02% sodium azide.
Source :	Rabbit
Dilution :	Western Blot: 1/500 - 1/2000. IHC-p: 1:100-300 ELISA: 1/20000. Not yet tested in other applications.
Purification :	The antibody was affinity-purified from rabbit antiserum by affinity-chromatography using epitope-specific immunogen.
Concentration :	1 mg/ml
Storage_stability :	-20°C/1 year
Msds :	MSDS_Antibody.pdf
Other_name :	CD7; T-cell antigen CD7; GP40; T-cell leukemia antigen; T-cell surface antigen Leu-9; TP41; CD7
Molecular Weight :	25KD

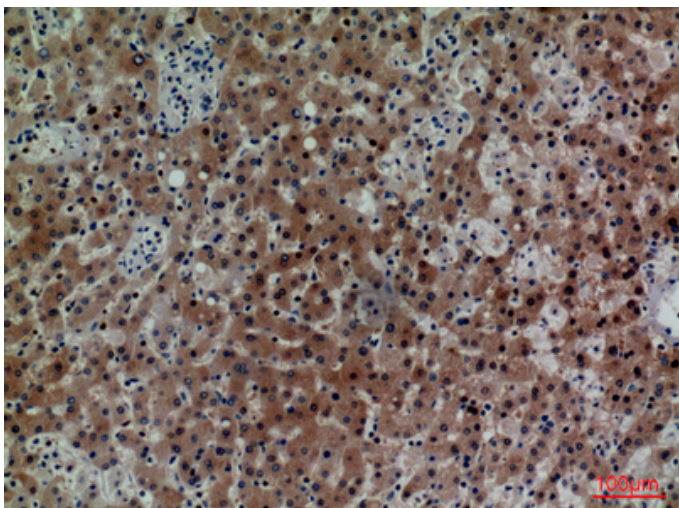
Product Images



Western Blot analysis of K562 cells using CD7 Polyclonal Antibody.. Secondary antibody was diluted at 1:20000



Immunohistochemical analysis of paraffin-embedded human muscle, antibody was diluted at 1:100



Immunohistochemical analysis of paraffin-embedded human liver, antibody was diluted at 1:100