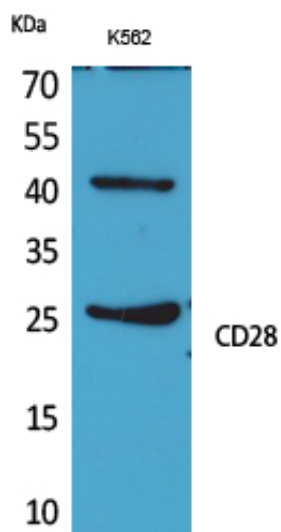




CD28 Polyclonal Antibody

Catalog_no :	AT5244
Applications :	WB,ELISA
Reactivity :	Human
Category :	抗原抗体
Size :	100µg/50µg/20µg
Gene_name :	CD28
Protein_name :	T-cell-specific surface glycoprotein CD28
Humangene_id :	940
Humanswissprot_no :	P10747
Immunogen :	Synthesized peptide derived from T-cell-specific surface glycoprotein CD28 at AA range: 11-60
Specificity :	CD28 Polyclonal Antibody detects endogenous levels of CD28 protein.
Formulation :	Liquid in PBS containing 50% glycerol, 0.5% BSA and 0.02% sodium azide.
Source :	Rabbit
Dilution :	Western Blot: 1/500 - 1/2000. ELISA: 1/20000. Not yet tested in other applications.
Purification :	The antibody was affinity-purified from rabbit antiserum by affinity-chromatography using epitope-specific immunogen.
Concentration :	1 mg/ml
Storage_stability :	-20°C/1 year
Msds :	MSDS_Antibody.pdf
Other_name :	CD28; T-cell-specific surface glycoprotein CD28; TP44; CD28
Molecular Weight :	25KD

Product Images



Western Blot analysis of K562 cells using CD28 Polyclonal Antibody.. Secondary antibody was diluted at 1:20000