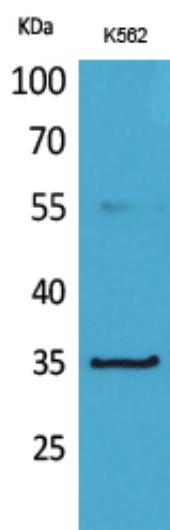


## CD32-A Polyclonal Antibody

Catalog_no :	AT5245
Applications :	WB,ELISA
Reactivity :	Human
Category :	抗原抗体
Size :	100µg/50µg/20µg
Gene_name :	FCGR2A
Protein_name :	Low affinity immunoglobulin gamma Fc region receptor II-a
Humangene_id :	<a href="#">2212</a>
Humanswissprot_no :	<a href="#">P12318</a>
Immunogen :	The antiserum was produced against synthesized peptide derived from the Internal region of human FCGR2A. AA range:41-90
Specificity :	CD32-A Polyclonal Antibody detects endogenous levels of CD32-A protein.
Formulation :	Liquid in PBS containing 50% glycerol, 0.5% BSA and 0.02% sodium azide.
Source :	Rabbit
Dilution :	Western Blot: 1/500 - 1/2000. ELISA: 1/20000. Not yet tested in other applications.
Purification :	The antibody was affinity-purified from rabbit antiserum by affinity-chromatography using epitope-specific immunogen.
Concentration :	1 mg/ml
Storage_stability :	-20°C/1 year
Msds :	MSDS_Antibody.pdf
Other_name :	FCGR2A; CD32; FCG2; FCGR2A1; IGFR2; Low affinity immunoglobulin gamma Fc region receptor II-a; IgG Fc receptor II-a; CDw32; Fc-gamma RII-a; Fc-gamma-RIIa; FcRII-a; CD32
Molecular Weight :	34KD

## Product Images



Western Blot analysis of K562 cells using CD32-A Polyclonal Antibody.. Secondary antibody was diluted at 1:20000