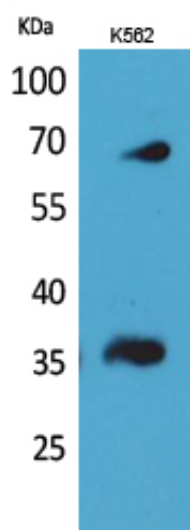


CD32-B/C Polyclonal Antibody

Catalog_no :	AT5246
Applications :	WB,ELISA
Reactivity :	Human
Category :	抗原抗体
Size :	100µg/50µg/20µg
Gene_name :	FCGR2B/FCGR2C
Protein_name :	Low affinity immunoglobulin gamma Fc region receptor II-b/Low affinity immunoglobulin gamma Fc region receptor II-c
Humangene_id :	2213
Humanswissprot_no :	P31994
Immunogen :	The antiserum was produced against synthesized peptide derived from the Internal region of human FCGR2B/C. AA range:141-190
Specificity :	CD32-B/C Polyclonal Antibody detects endogenous levels of CD32-B/C protein.
Formulation :	Liquid in PBS containing 50% glycerol, 0.5% BSA and 0.02% sodium azide.
Source :	Rabbit
Dilution :	Western Blot: 1/500 - 1/2000. ELISA: 1/20000. Not yet tested in other applications.
Purification :	The antibody was affinity-purified from rabbit antiserum by affinity-chromatography using epitope-specific immunogen.
Concentration :	1 mg/ml
Storage_stability :	-20°C/1 year
Msds :	MSDS_Antibody.pdf
Other_name :	FCGR2B; CD32; FCG2; IGFR2; Low affinity immunoglobulin gamma Fc region receptor II-b; IgG Fc receptor II-b; CDw32; Fc-gamma RII-b; Fc-gamma-RIIb; FcRII-b; CD32; FCGR2C; CD32; FCG2; IGFR2;Low affinity immunoglobulin gamma Fc region receptor II-c; IgG Fc receptor II-c; CDw32; Fc-gamma RII-c; Fc-gamma-RIIc; FcRII-c; CD32
Molecular Weight :	35KD

Product Images



Western Blot analysis of K562 cells using CD32-B/C Polyclonal Antibody.. Secondary antibody was diluted at 1:20000