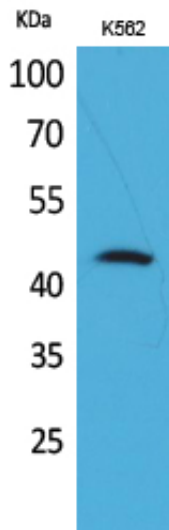


CD48 Polyclonal Antibody

Catalog_no :	AT5247
Applications :	WB,IHC-p,ELISA
Reactivity :	Human
Category :	抗原抗体
Size :	100µg/50µg/20µg
Gene_name :	CD48
Protein_name :	CD48 antigen
Humangene_id :	962
Humanswissprot_no :	P09326
Immunogen :	The antiserum was produced against synthesized peptide derived from the Internal region of human CD48. AA range:41-90
Specificity :	CD48 Polyclonal Antibody detects endogenous levels of CD48 protein.
Formulation :	Liquid in PBS containing 50% glycerol, 0.5% BSA and 0.02% sodium azide.
Source :	Rabbit
Dilution :	Western Blot: 1/500 - 1/2000. IHC-p: 1:100-300 ELISA: 1/20000. Not yet tested in other applications.
Purification :	The antibody was affinity-purified from rabbit antiserum by affinity-chromatography using epitope-specific immunogen.
Concentration :	1 mg/ml
Storage_stability :	-20°C/1 year
Msds :	MSDS_Antibody.pdf
Other_name :	CD48; BCM1; BLAST1; CD48 antigen; B-lymphocyte activation marker BLAST-1; BCM1 surface antigen; Leukocyte antigen MEM-102; TCT.1; CD48
Molecular Weight :	40KD

Product Images



Western Blot analysis of K562 cells using CD48 Polyclonal Antibody.. Secondary antibody was diluted at 1:20000

