

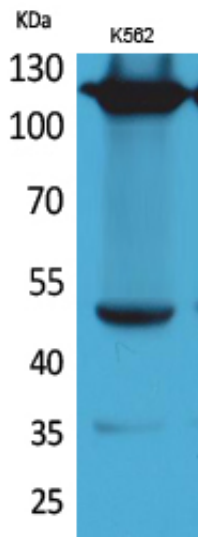
Integrin α 4 Polyclonal Antibody

Catalog_no :	AT5248
Applications :	WB,IHC-p,ELISA
Reactivity :	Human,Mouse,Rat
Category :	抗原抗体
Size :	100 μ g/50 μ g/20 μ g
Gene_name :	ITGA4
Protein_name :	Integrin alpha-4
Humangene_id :	3676
Humanswissprot_no :	P13612
Mousegene_id :	16401
Mouseswissprot_no :	Q00651
Immunogen :	The antiserum was produced against synthesized peptide derived from the Internal region of human ITGA4. AA range:571-620
Specificity :	Integrin α 4 Polyclonal Antibody detects endogenous levels of Integrin α 4 protein.
Formulation :	Liquid in PBS containing 50% glycerol, 0.5% BSA and 0.02% sodium azide.
Source :	Rabbit
Dilution :	Western Blot: 1/500 - 1/2000. IHC-p: 1:100-300 ELISA: 1/20000. Not yet tested in other applications.
Purification :	The antibody was affinity-purified from rabbit antiserum by affinity-chromatography using epitope-specific immunogen.
Concentration :	1 mg/ml
Storage_stability :	-20°C/1 year
Msds :	MSDS_Antibody.pdf
Other_name :	ITGA4; CD49D; Integrin alpha-4; CD49 antigen-like family member D; Integrin alpha-IV; VLA-4 subunit alpha; CD49d
Molecular	120KD

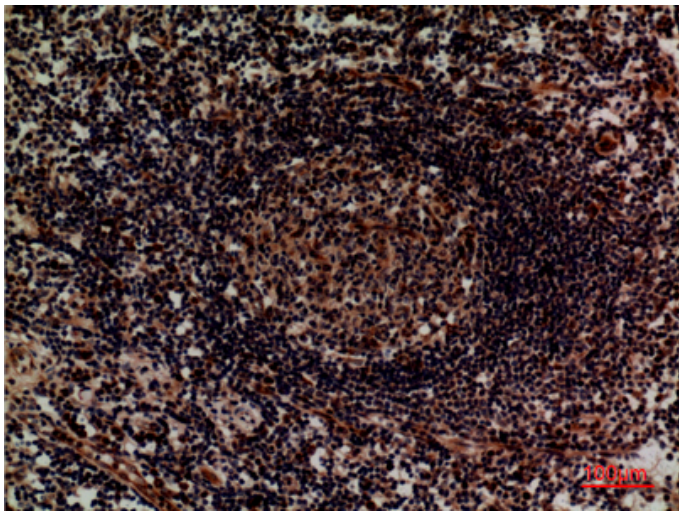


Weight :

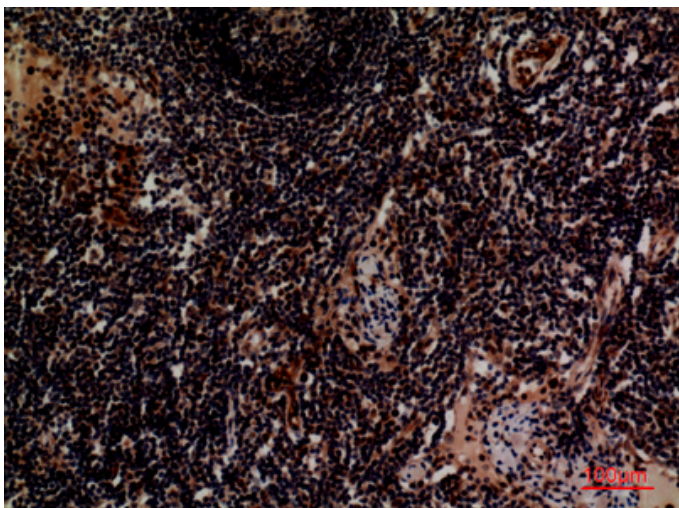
Product Images



Western Blot analysis of K562 cells using Integrin α 4 Polyclonal Antibody. Antibody was diluted at 1:1000. Secondary antibody was diluted at 1:20000

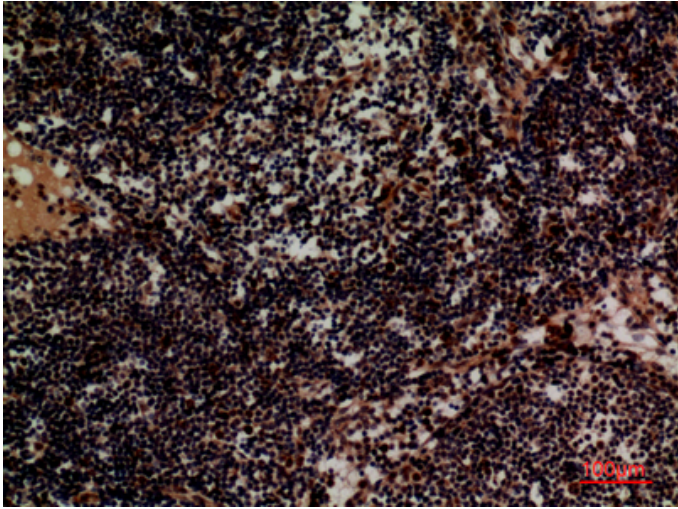


Immunohistochemical analysis of paraffin-embedded human-lymph, antibody was diluted at 1:100

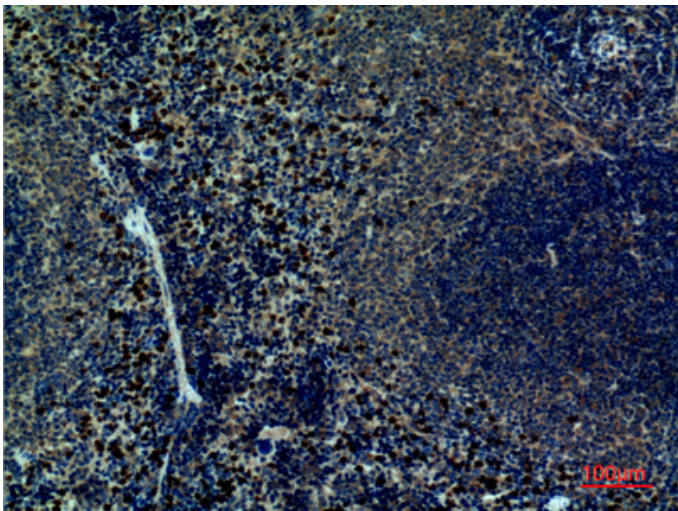


Immunohistochemical analysis of paraffin-embedded human-lymph, antibody was diluted at 1:100

Immunohistochemical analysis of paraffin-embedded human-lymph, antibody was diluted at 1:100



Immunohistochemical analysis of paraffin-embedded mouse-spleen, antibody was diluted at 1:100



Immunohistochemical analysis of paraffin-embedded mouse-spleen, antibody was diluted at 1:100

