

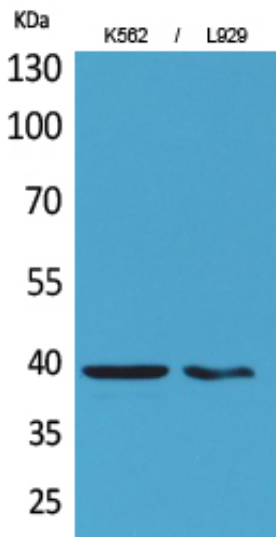
CD84 Polyclonal Antibody

Catalog_no :	AT5256
Applications :	WB,IHC-p,ELISA
Reactivity :	Human,Mouse
Category :	抗原抗体
Size :	100µg/50µg/20µg
Gene_name :	CD84
Protein_name :	SLAM family member 5
Humangene_id :	8832
Humanswissprot_no :	Q9UIB8
Mousegene_id :	12523
Mouseswissprot_no :	Q18PI6
Immunogen :	The antiserum was produced against synthesized peptide derived from the Internal region of human CD84. AA range:131-180
Specificity :	CD84 Polyclonal Antibody detects endogenous levels of CD84 protein.
Formulation :	Liquid in PBS containing 50% glycerol, 0.5% BSA and 0.02% sodium azide.
Source :	Rabbit
Dilution :	Western Blot: 1/500 - 1/2000. IHC-p: 1:100-300 ELISA: 1/20000. Not yet tested in other applications.
Purification :	The antibody was affinity-purified from rabbit antiserum by affinity-chromatography using epitope-specific immunogen.
Concentration :	1 mg/ml
Storage_stability :	-20°C/1 year
Msds :	MSDS_Antibody.pdf
Other_name :	CD84; SLAMF5; SLAM family member 5; Cell surface antigen MAX.3; Hly9-beta; Leukocyte differentiation antigen CD84; Signaling lymphocytic activation molecule 5; CD84
Molecular	39KD

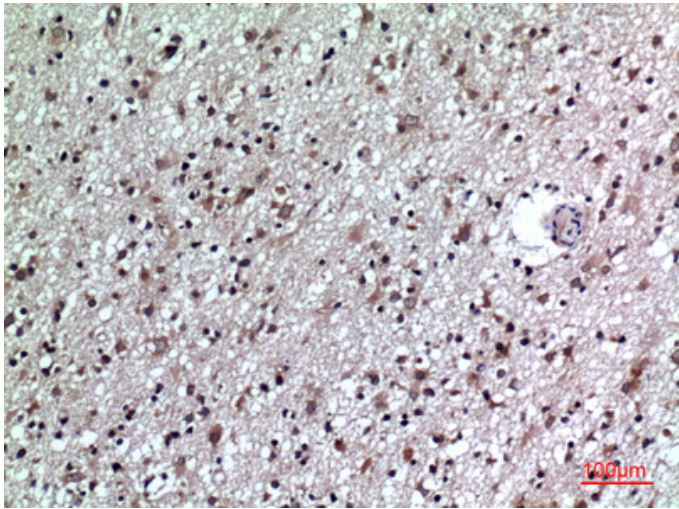


Weight :

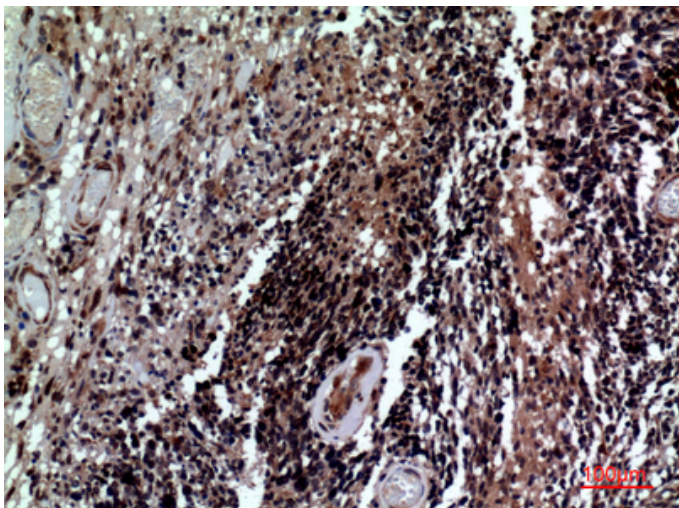
Product Images



Western Blot analysis of K562, L929 cells using CD84 Polyclonal Antibody.. Secondary antibody was diluted at 1:20000



Immunohistochemical analysis of paraffin-embedded human brain, antibody was diluted at 1:100



Immunohistochemical analysis of paraffin-embedded human brain, antibody was diluted at 1:100