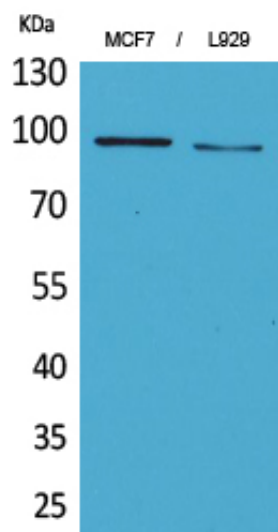




## CD100 Polyclonal Antibody

Catalog_no :	AT5259
Applications :	WB,ELISA
Reactivity :	Human,Mouse,Rat
Category :	抗原抗体
Size :	100µg/50µg/20µg
Gene_name :	SEMA4D
Protein_name :	Semaphorin-4D
Humangene_id :	<a href="#">10507</a>
Humanswissprot_no :	<a href="#">Q92854</a>
Mousegene_id :	<a href="#">20354</a>
Mouseswissprot_no :	<a href="#">O09126</a>
Immunogen :	The antiserum was produced against synthesized peptide derived from the N-terminal region of human SEMA4D. AA range:61-110
Specificity :	CD100 Polyclonal Antibody detects endogenous levels of CD100 protein.
Formulation :	Liquid in PBS containing 50% glycerol, 0.5% BSA and 0.02% sodium azide.
Source :	Rabbit
Dilution :	Western Blot: 1/500 - 1/2000. ELISA: 1/20000. Not yet tested in other applications.
Purification :	The antibody was affinity-purified from rabbit antiserum by affinity-chromatography using epitope-specific immunogen.
Concentration :	1 mg/ml
Storage_stability :	-20°C/1 year
Msds :	MSDS_Antibody.pdf
Other_name :	SEMA4D; C9orf164; CD100; SEMAJ; Semaphorin-4D; A8; BB18; GR3; CD100
Molecular Weight :	95KD

## Product Images



Western Blot analysis of MCF7, L929 cells using CD100 Polyclonal Antibody.. Secondary antibody was diluted at 1:20000