



CD107a Polyclonal Antibody

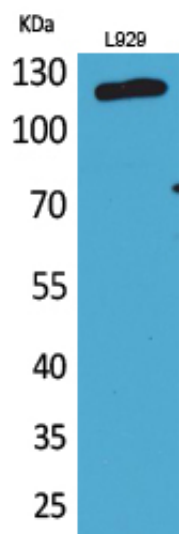
Catalog_no :	<u>AT5260</u>
Applications :	<u>WB,ELISA</u>
Reactivity :	<u>Human,Rat</u>
Category :	<u>抗原抗体</u>
Size :	<u>100µg/50µg/20µg</u>
Gene_name :	<u>LAMP1</u>
Protein_name :	<u>Lysosome-associated membrane glycoprotein 1</u>
Humangene_id :	<u>3916</u>
Humanswissprot_no :	<u>P11279</u>
Ratgene_id :	<u>25328</u>
Ratswissprot_no :	<u>P14562</u>
Immunogen :	<u>The antiserum was produced against synthesized peptide derived from the Internal region of human LAMP1. AA range:211-260</u>
Specificity :	<u>CD107a Polyclonal Antibody detects endogenous levels of CD107a protein.</u>
Formulation :	<u>Liquid in PBS containing 50% glycerol, 0.5% BSA and 0.02% sodium azide.</u>
Source :	<u>Rabbit</u>
Dilution :	<u>Western Blot: 1/500 - 1/2000. ELISA: 1/20000. Not yet tested in other applications.</u>
Purification :	<u>The antibody was affinity-purified from rabbit antiserum by affinity-chromatography using epitope-specific immunogen.</u>
Concentration :	<u>1 mg/ml</u>
Storage_stability :	<u>-20°C/1 year</u>
Msds :	<u>MSDS_Antibody.pdf</u>
Other_name :	<u>LAMP1; Lysosome-associated membrane glycoprotein 1; LAMP-1; Lysosome-associated membrane protein 1; CD107 antigen-like family member A; CD107a</u>
Molecular Weight :	<u>120KD</u>



专注二抗产品

Biodragon旗下品牌

Product Images



Western Blot analysis of L929 cells using CD107a Polyclonal Antibody.. Secondary antibody was diluted at 1:20000