

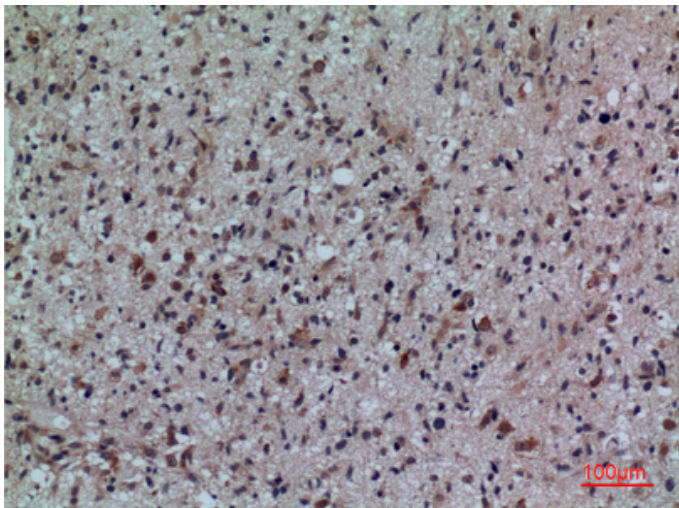
CD307 Polyclonal Antibody

Catalog_no :	AT5268
Applications :	WB,IHC-p,ELISA
Reactivity :	Human
Category :	抗原抗体
Size :	100µg/50µg/20µg
Gene_name :	FCRL5
Protein_name :	Fc receptor-like protein 5
Humangene_id :	83416
Humanswissprot_no :	Q96RD9
Immunogen :	The antiserum was produced against synthesized peptide derived from the Internal region of human FCRL5. AA range:191-240
Specificity :	CD307 Polyclonal Antibody detects endogenous levels of CD307 protein.
Formulation :	Liquid in PBS containing 50% glycerol, 0.5% BSA and 0.02% sodium azide.
Source :	Rabbit
Dilution :	Western Blot: 1/500 - 1/2000. IHC-p: 1:100-300 ELISA: 1/20000. Not yet tested in other applications.
Purification :	The antibody was affinity-purified from rabbit antiserum by affinity-chromatography using epitope-specific immunogen.
Concentration :	1 mg/ml
Storage_stability :	-20°C/1 year
Msds :	MSDS_Antibody.pdf
Other_name :	FCRL5; FCRH5; IRTA2; Fc receptor-like protein 5; FcR-like protein 5; FcRL5; BXMAS1; Fc receptor homolog 5; FcRH5; Immune receptor translocation-associated protein 2; CD307e
Molecular Weight :	110KD

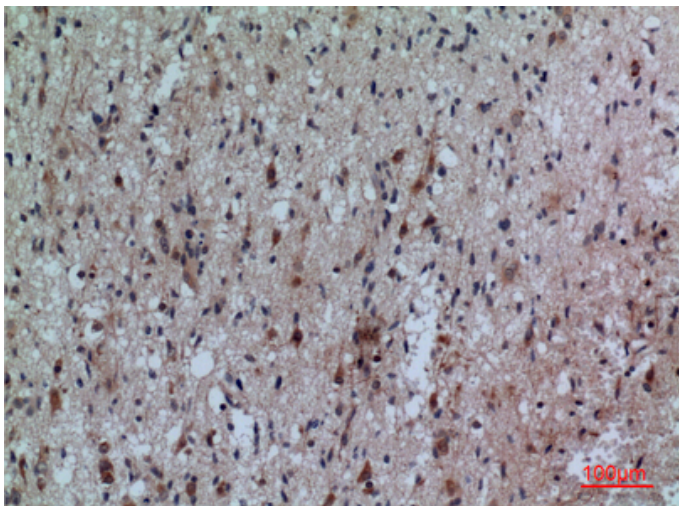
Product Images



Western Blot analysis of HepG2 cells using CD307 Polyclonal Antibody.. Secondary antibody was diluted at 1:20000



Immunohistochemical analysis of paraffin-embedded human brain, antibody was diluted at 1:100



Immunohistochemical analysis of paraffin-embedded human brain, antibody was diluted at 1:100