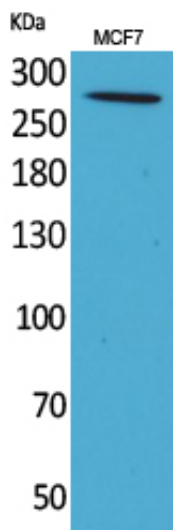


IGF-IIR Polyclonal Antibody

Catalog_no :	AT5269
Applications :	WB,ELISA
Reactivity :	Human
Category :	抗原抗体
Size :	100µg/50µg/20µg
Gene_name :	IGF2R
Protein_name :	Cation-independent mannose-6-phosphate receptor
Humangene_id :	3482
Humanswissprot_no :	P11717
Immunogen :	The antiserum was produced against synthesized peptide derived from the C-terminal region of human IGF2R. AA range:2251-2300
Specificity :	IGF-IIR Polyclonal Antibody detects endogenous levels of IGF-IIR protein.
Formulation :	Liquid in PBS containing 50% glycerol, 0.5% BSA and 0.02% sodium azide.
Source :	Rabbit
Dilution :	Western Blot: 1/500 - 1/2000. ELISA: 1/20000. Not yet tested in other applications.
Purification :	The antibody was affinity-purified from rabbit antiserum by affinity-chromatography using epitope-specific immunogen.
Concentration :	1 mg/ml
Storage_stability :	-20°C/1 year
Msds :	MSDS_Antibody.pdf
Other_name :	IGF2R; MPRI; Cation-independent mannose-6-phosphate receptor; CI Man-6-P receptor; CI-MPR; M6PR; 300 kDa mannose 6-phosphate receptor; MPR 300;Insulin-like growth factor 2 receptor; Insulin-like growth factor II receptor; IGF-II receptor; M6P/IGF2 receptor; M6P/IGF2R; CD222
Molecular Weight :	250KD

Product Images



Western Blot analysis of MCF7 cells using IGF-IIR Polyclonal Antibody.. Secondary antibody was diluted at 1:20000