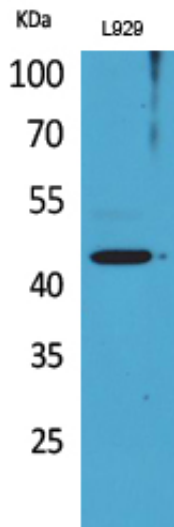


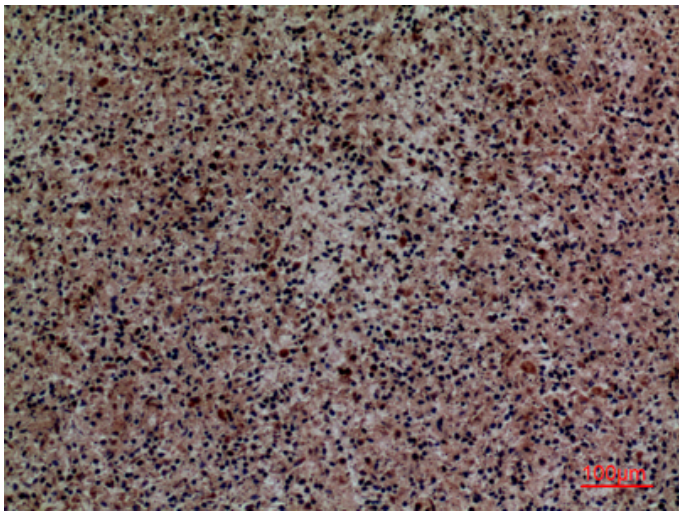
Siglec-5/14 Polyclonal Antibody

Catalog_no :	AT5270
Applications :	WB,IHC-p,ELISA
Reactivity :	Human
Category :	抗原抗体
Size :	100µg/50µg/20µg
Gene_name :	SIGLEC5/SIGLEC14
Protein_name :	Sialic acid-binding Ig-like lectin 5/Sialic acid-binding Ig-like lectin 14
Humangene_id :	8778
Humanswissprot_no :	O15389
Immunogen :	Synthesized peptide derived from Sialic acid-binding Ig-like lectin 5/Sialic acid-binding Ig-like lectin 14 at AA range: 91-140
Specificity :	Siglec-5/14 Polyclonal Antibody detects endogenous levels of Siglec-5/14 protein.
Formulation :	Liquid in PBS containing 50% glycerol, 0.5% BSA and 0.02% sodium azide.
Source :	Rabbit
Dilution :	Western Blot: 1/500 - 1/2000. IHC-p: 1:100-300 ELISA: 1/20000. Not yet tested in other applications.
Purification :	The antibody was affinity-purified from rabbit antiserum by affinity-chromatography using epitope-specific immunogen.
Concentration :	1 mg/ml
Storage_stability :	-20°C/1 year
Msds :	MSDS_Antibody.pdf
Other_name :	SIGLEC5; CD33L2; OBBP2; Sialic acid-binding Ig-like lectin 5; Siglec-5; CD33 antigen-like 2; Obesity-binding protein 2; OB-BP2; OB-binding protein 2; CD170; SIGLEC14; Sialic acid-binding Ig-like lectin 14; Siglec-14
Molecular Weight :	60KD

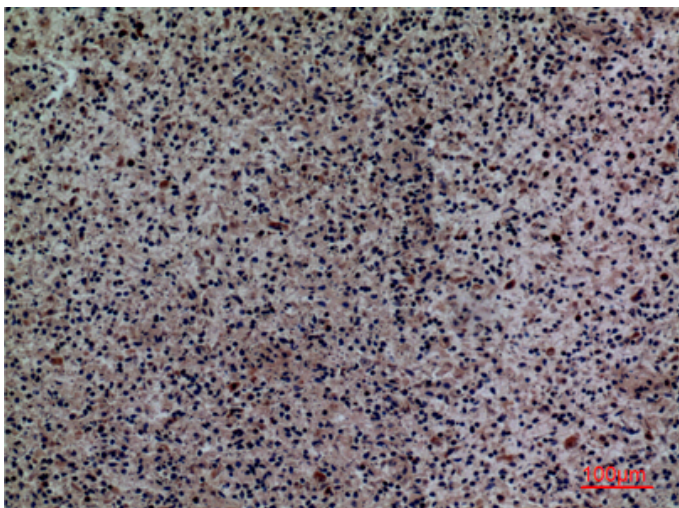
Product Images



Western Blot analysis of L929 cells using Siglec-5/14 Polyclonal Antibody. Antibody was diluted at 1:1000. Secondary antibody was diluted at 1:20000



Immunohistochemical analysis of paraffin-embedded human spleen, antibody was diluted at 1:100



Immunohistochemical analysis of paraffin-embedded human spleen, antibody was diluted at 1:100