



CD229 Polyclonal Antibody

Catalog_no :	AT5271
Applications :	WB,IHC-p,ELISA
Reactivity :	Human
Category :	抗原抗体
Size :	100µg/50µg/20µg
Gene_name :	LY9
Protein_name :	T-lymphocyte surface antigen Ly-9
Humangene_id :	4063
Humanswissprot_no :	Q9HBG7
Mousegene_id :	17085
Mouseswissprot_no :	Q01965
Immunogen :	The antiserum was produced against synthesized peptide derived from the Internal region of human LY9. AA range:261-310
Specificity :	CD229 Polyclonal Antibody detects endogenous levels of CD229 protein.
Formulation :	Liquid in PBS containing 50% glycerol, 0.5% BSA and 0.02% sodium azide.
Source :	Rabbit
Dilution :	Western Blot: 1/500 - 1/2000. IHC-p: 1:100-300 ELISA: 1/20000. Not yet tested in other applications.
Purification :	The antibody was affinity-purified from rabbit antiserum by affinity-chromatography using epitope-specific immunogen.
Concentration :	1 mg/ml
Storage_stability :	-20°C/1 year
Msds :	MSDS_Antibody.pdf
Other_name :	LY9; CDABP0070; T-lymphocyte surface antigen Ly-9; Cell surface molecule Ly-9; Lymphocyte antigen 9; CD229
Molecular	72KD

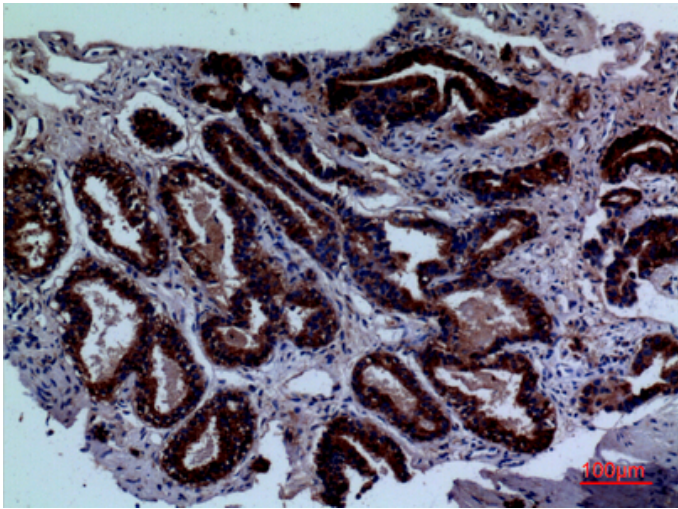


Weight :

Product Images



Western Blot analysis of HepG2 cells using CD229 Polyclonal Antibody.. Secondary antibody was diluted at 1:20000



Immunohistochemical analysis of paraffin-embedded human-prostate-cancer, antibody was diluted at 1:100