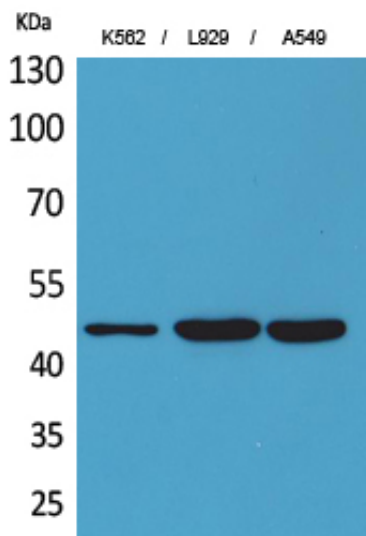


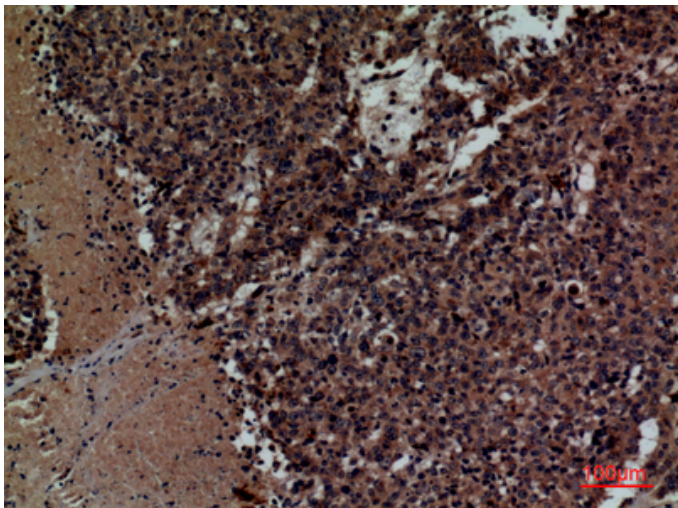
CD158z Polyclonal Antibody

Catalog_no :	AT5273
Applications :	WB,IHC-p,ELISA
Reactivity :	Human
Category :	抗原抗体
Size :	100µg/50µg/20µg
Gene_name :	KIR3DL3
Protein_name :	Killer cell immunoglobulin-like receptor 3DL3
Humangene_id :	100133046
Humanswissprot_no :	Q8N743
Immunogen :	The antiserum was produced against synthesized peptide derived from the Internal region of human KIR3DL3. AA range:231-280
Specificity :	CD158z Polyclonal Antibody detects endogenous levels of CD158z protein.
Formulation :	Liquid in PBS containing 50% glycerol, 0.5% BSA and 0.02% sodium azide.
Source :	Rabbit
Dilution :	Western Blot: 1/500 - 1/2000. IHC-p: 1:100-300 ELISA: 1/20000. Not yet tested in other applications.
Purification :	The antibody was affinity-purified from rabbit antiserum by affinity-chromatography using epitope-specific immunogen.
Concentration :	1 mg/ml
Storage_stability :	-20°C/1 year
Msds :	MSDS_Antibody.pdf
Other_name :	KIR3DL3; CD158Z; KIR3DL7; KIRC1; Killer cell immunoglobulin-like receptor 3DL3; CD158 antigen-like family member Z; Killer cell inhibitory receptor 1; CD158z
Molecular Weight :	45KD

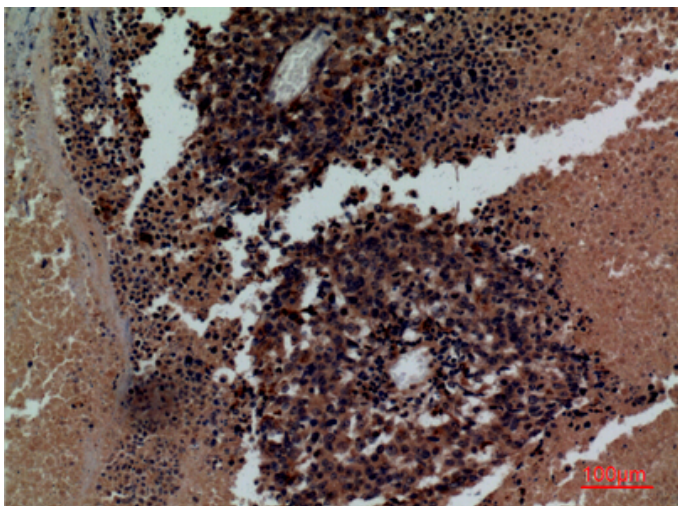
Product Images



Western Blot analysis of K562, L929, A549 cells using CD158z Polyclonal Antibody.. Secondary antibody was diluted at 1:20000

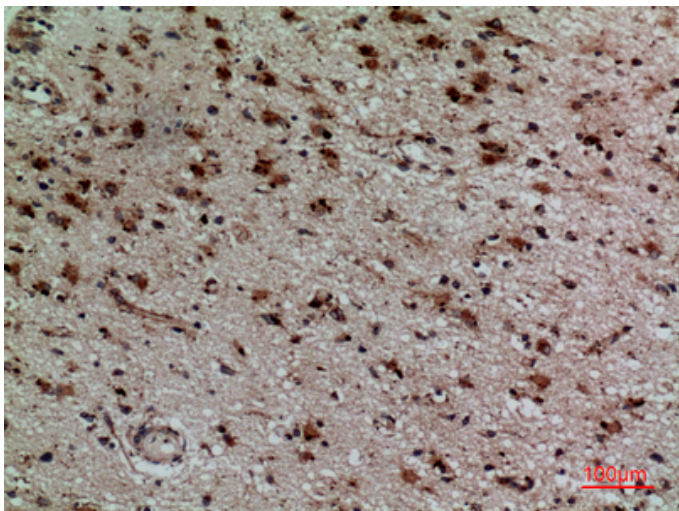
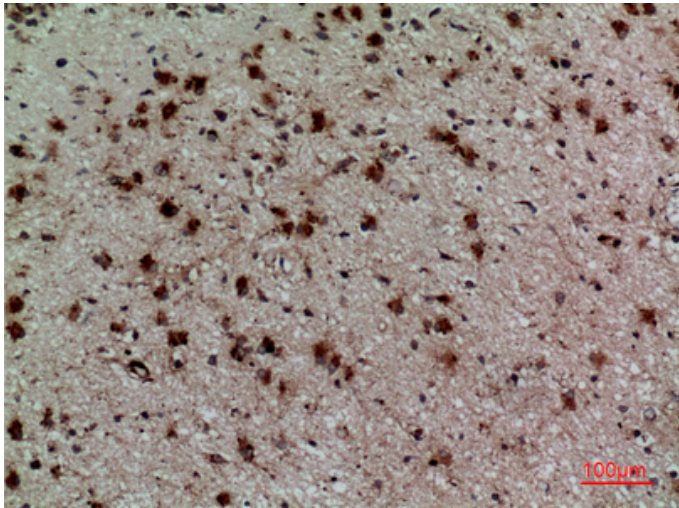


Immunohistochemical analysis of paraffin-embedded human-lung-cancer, antibody was diluted at 1:100



Immunohistochemical analysis of paraffin-embedded human-lung-cancer, antibody was diluted at 1:100

Immunohistochemical analysis of paraffin-embedded human-brain, antibody was diluted at 1:100



Immunohistochemical analysis of paraffin-embedded human-brain, antibody was diluted at 1:100