

Ob-R Polyclonal Antibody

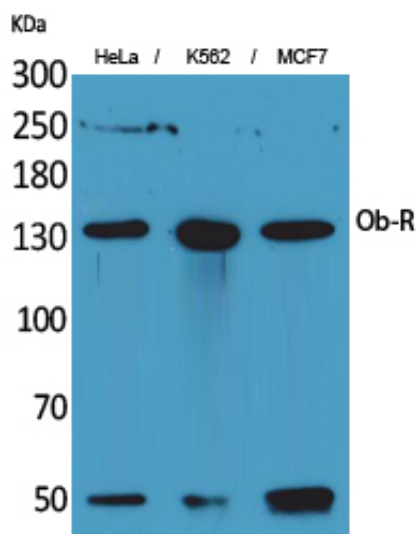
Catalog_no :	<u>AT5282</u>
Applications :	<u>WB,ELISA</u>
Reactivity :	<u>Human</u>
Category :	<u>抗原抗体</u>
Size :	<u>100µg/50µg/20µg</u>
Gene_name :	<u>LEPR</u>
Protein_name :	<u>Leptin receptor</u>
Humangene_id :	<u>3953</u>
Humanswissprot_no :	<u>P48357</u>
Mousegene_id :	<u>16847</u>
Mouseswissprot_no :	<u>P48356</u>
Ratgene_id :	<u>24536</u>
Ratswissprot_no :	<u>Q62959</u>
Immunogen :	<u>Synthesized peptide derived from Leptin receptor at AA range: 791-840</u>
Specificity :	<u>Ob-R Polyclonal Antibody detects endogenous levels of Ob-R protein.</u>
Formulation :	<u>Liquid in PBS containing 50% glycerol, 0.5% BSA and 0.02% sodium azide.</u>
Source :	<u>Rabbit</u>
Dilution :	<u>Western Blot: 1/500 - 1/2000. ELISA: 1/20000. Not yet tested in other applications.</u>
Purification :	<u>The antibody was affinity-purified from rabbit antiserum by affinity-chromatography using epitope-specific immunogen.</u>
Concentration :	<u>1 mg/ml</u>
Storage_stability :	<u>-20°C/1 year</u>
Msds :	<u>MSDS_Antibody.pdf</u>
Other_name :	<u>LEPR; DB; OBR; Leptin receptor; LEP-R; HuB219; OB receptor; OB-R; CD295</u>



Molecular
Weight :

132KD

Product Images



Western Blot analysis of HeLa, K562, MCF7 cells using Ob-R Polyclonal Antibody. Antibody was diluted at 1:1000. Secondary antibody was diluted at 1:20000