

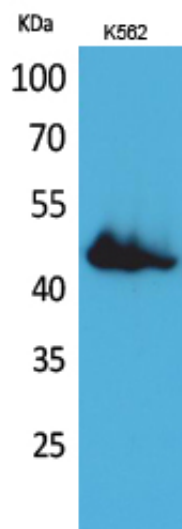
CD177 Polyclonal Antibody

Catalog_no :	AT5283
Applications :	WB,IHC-p,ELISA
Reactivity :	Human
Category :	抗原抗体
Size :	100µg/50µg/20µg
Gene_name :	CD177
Protein_name :	CD177 antigen
Humangene_id :	57126
Humanswissprot_no :	Q8N6Q3
Mousegene_id :	68891
Mouseswissprot_no :	Q8R2S8
Immunogen :	The antiserum was produced against synthesized peptide derived from the Internal region of human CD177. AA range:361-410
Specificity :	CD177 Polyclonal Antibody detects endogenous levels of CD177 protein.
Formulation :	Liquid in PBS containing 50% glycerol, 0.5% BSA and 0.02% sodium azide.
Source :	Rabbit
Dilution :	Western Blot: 1/500 - 1/2000. IHC-p: 1:100-300 ELISA: 1/20000. Not yet tested in other applications.
Purification :	The antibody was affinity-purified from rabbit antiserum by affinity-chromatography using epitope-specific immunogen.
Concentration :	1 mg/ml
Storage_stability :	-20°C/1 year
Msds :	MSDS_Antibody.pdf
Other_name :	CD177; NB1; PRV1; CD177 antigen; Human neutrophil alloantigen 2a; HNA-2a; NB1 glycoprotein; NB1 GP; Polycythemia rubra vera protein 1; PRV-1; CD177
Molecular	46KD

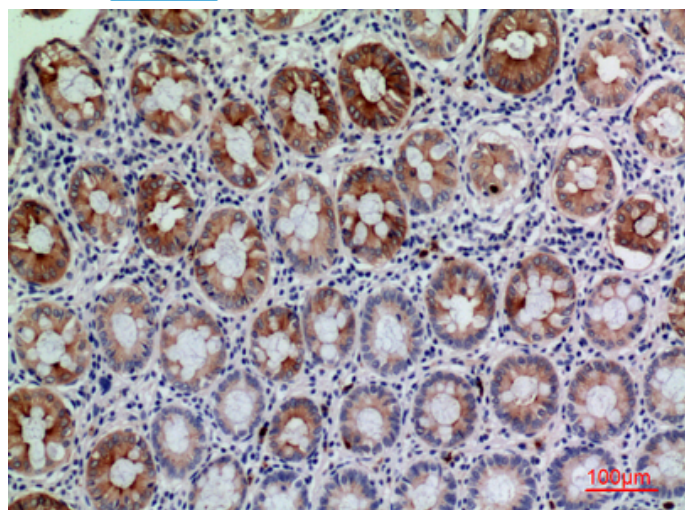


Weight :

Product Images



Western Blot analysis of K562 cells using CD177 Polyclonal Antibody.. Secondary antibody was diluted at 1:20000



Immunohistochemical analysis of paraffin-embedded human-colon, antibody was diluted at 1:100