

CD241 Polyclonal Antibody

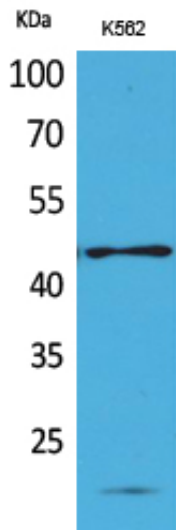
Catalog_no :	<u>AT5284</u>
Applications :	<u>WB,IHC-p,ELISA</u>
Reactivity :	<u>Human</u>
Category :	<u>抗原抗体</u>
Size :	<u>100µg/50µg/20µg</u>
Gene_name :	<u>RHAG</u>
Protein_name :	<u>Ammonium transporter Rh type A</u>
Humangene_id	<u>6005</u>
:	<u></u>
Humanswissprot	<u>Q02094</u>
_no :	<u></u>
Mousegene_id :	<u>19743</u>
Mouseswissprot	<u>Q9QUT0</u>
_no :	<u></u>
Ratgene_id :	<u>65207</u>
Ratswissprot_no	<u>Q7TNK7</u>
:	<u></u>
Immunogen :	<u>The antiserum was produced against synthesized peptide derived from the N-terminal region of human RHAG. AA range:1-50</u>
Specificity :	<u>CD241 Polyclonal Antibody detects endogenous levels of CD241 protein.</u>
Formulation :	<u>Liquid in PBS containing 50% glycerol, 0.5% BSA and 0.02% sodium azide.</u>
Source :	<u>Rabbit</u>
Dilution :	<u>Western Blot: 1/500 - 1/2000. IHC-p: 1:100-300 ELISA: 1/20000. Not yet tested in other applications.</u>
Purification :	<u>The antibody was affinity-purified from rabbit antiserum by affinity-chromatography using epitope-specific immunogen.</u>
Concentration :	<u>1 mg/ml</u>
Storage_stability	<u>-20°C/1 year</u>
:	<u></u>
Msds :	<u>MSDS_Antibody.pdf</u>



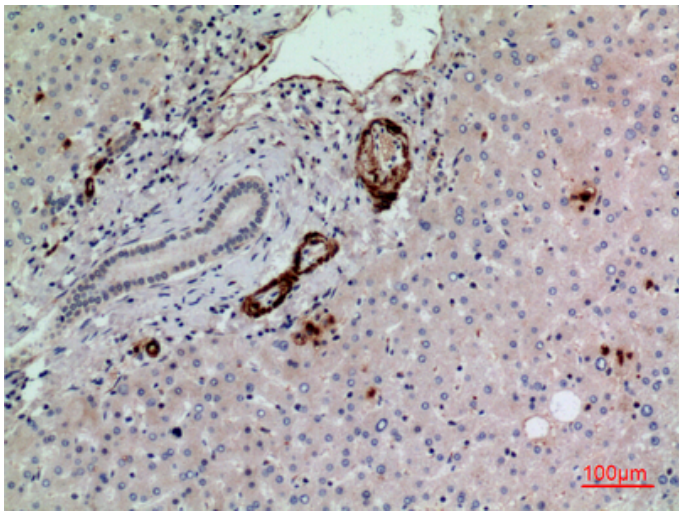
Other_name : RHAG; RH50; Ammonium transporter Rh type A; Erythrocyte membrane glycoprotein Rh50; Erythrocyte plasma membrane 50 kDa glycoprotein; Rh50A; Rhesus blood group family type A glycoprotein;Rh family type A glycoprotein; Rh type A glycoprotein; Rhesus blood group-associated ammonia channel; Rhesus blood group-associated glycoprotein; CD241

Molecular Weight : 44KD

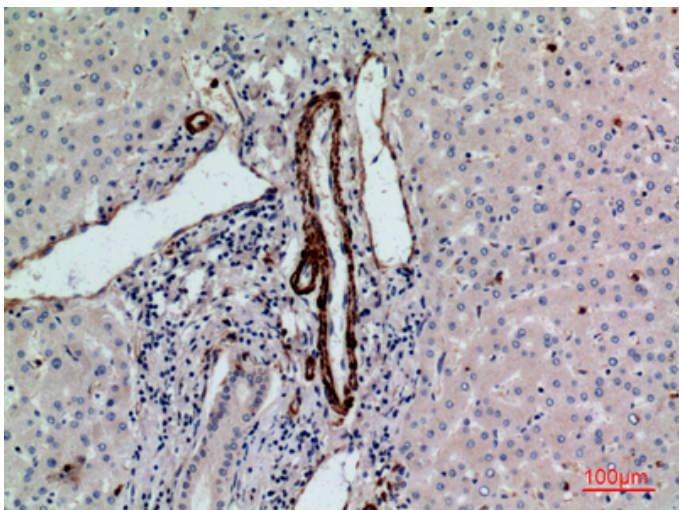
Product Images



Western Blot analysis of K562 cells using CD241 Polyclonal Antibody.. Secondary antibody was diluted at 1:20000

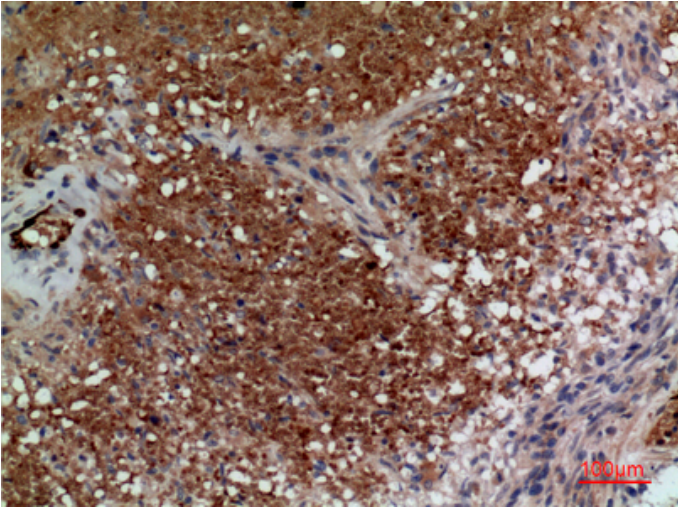


Immunohistochemical analysis of paraffin-embedded human-liver, antibody was diluted at 1:100

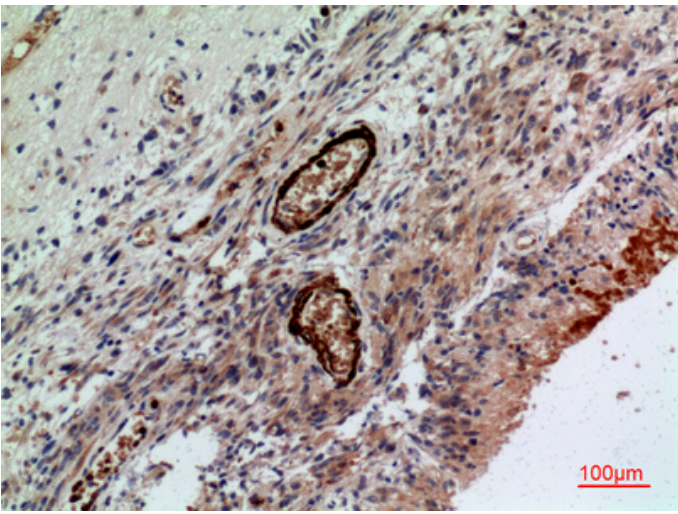


Immunohistochemical analysis of paraffin-embedded human-liver, antibody was diluted at 1:100

Immunohistochemical analysis of paraffin-embedded human-brain, antibody was diluted at 1:100



Immunohistochemical analysis of paraffin-embedded human-brain, antibody was diluted at 1:100



Immunohistochemical analysis of paraffin-embedded human-brain, antibody was diluted at 1:100

