

CD276 Polyclonal Antibody

Catalog_no :	AT5285
Applications :	WB,IHC-p,ELISA
Reactivity :	Human,Mouse,Rat
Category :	抗原抗体
Size :	100µg/50µg/20µg
Gene_name :	CD276
Protein_name :	CD276 antigen
Humangene_id :	80381
Humanswissprot_no :	Q5ZPR3
Mousegene_id :	102657
Mouseswissprot_no :	Q8VE98
Ratgene_id :	315716
Ratswissprot_no :	Q7TPB4
Immunogen :	The antiserum was produced against synthesized peptide derived from the Internal region of human CD276. AA range:271-320
Specificity :	CD276 Polyclonal Antibody detects endogenous levels of CD276 protein.
Formulation :	Liquid in PBS containing 50% glycerol, 0.5% BSA and 0.02% sodium azide.
Source :	Rabbit
Dilution :	Western Blot: 1/500 - 1/2000. IHC-p: 1:100-300 ELISA: 1/20000. Not yet tested in other applications.
Purification :	The antibody was affinity-purified from rabbit antiserum by affinity-chromatography using epitope-specific immunogen.
Concentration :	1 mg/ml
Storage_stability :	-20°C/1 year
Msds :	MSDS_Antibody.pdf



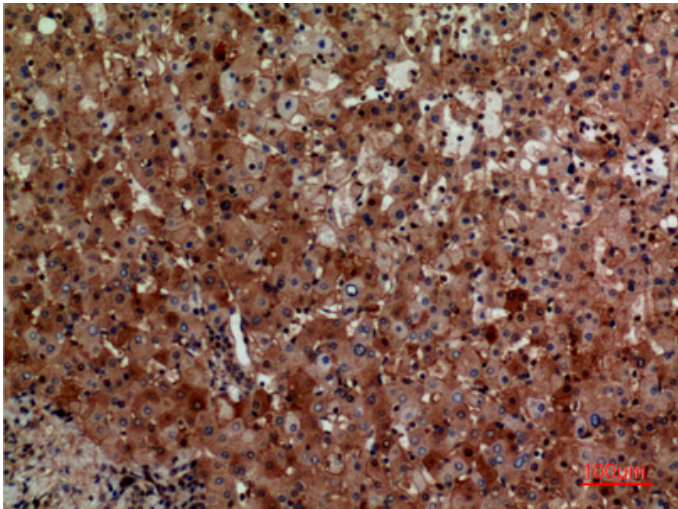
Other_name : CD276; B7H3; PSEC0249; CD276 antigen; 4Ig-B7-H3; B7 homolog 3; B7-H3;
Costimulatory molecule; CD276

Molecular Weight : 57KD

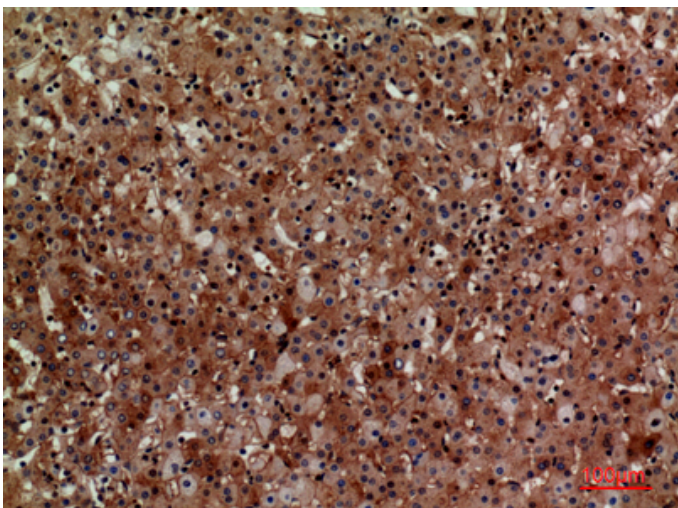
Product Images



Western Blot analysis of 293 cells using CD276 Polyclonal Antibody.. Secondary antibody was diluted at 1:20000

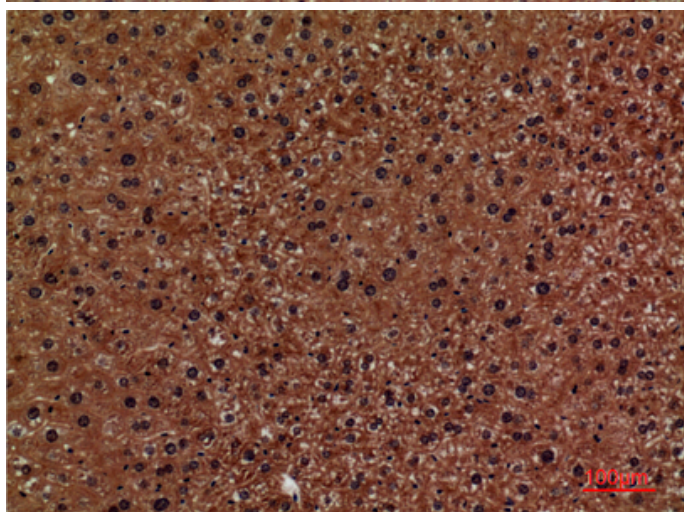
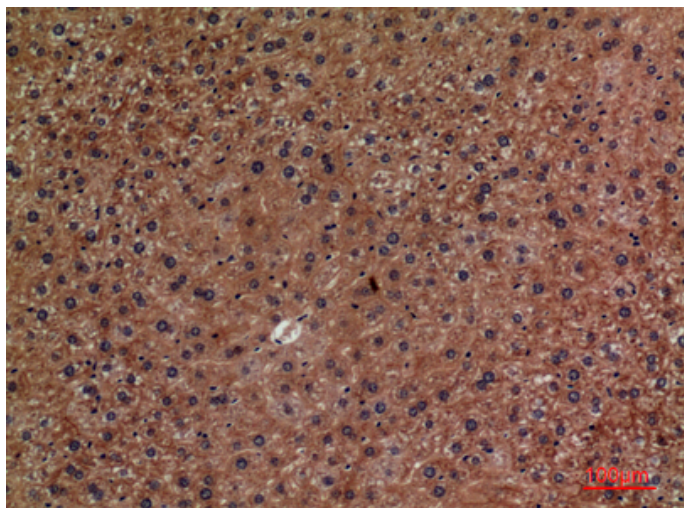


Immunohistochemical analysis of paraffin-embedded human-liver, antibody was diluted at 1:100



Immunohistochemical analysis of paraffin-embedded mouse-liver, antibody was diluted at 1:100

Immunohistochemical analysis of paraffin-embedded mouse-liver, antibody was diluted at 1:100



Immunohistochemical analysis of paraffin-embedded mouse-liver, antibody was diluted at 1:100