

CD159a/c Polyclonal Antibody

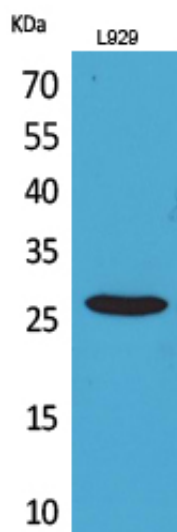
Catalog_no :	AT5288
Applications :	WB,IHC-p,ELISA
Reactivity :	Human
Category :	抗原抗体
Size :	100µg/50µg/20µg
Gene_name :	KLRC1/KLRC2/KLRC3
Protein_name :	NKG2-A/NKG2-B type II integral membrane protein/NKG2-C type II integral membrane protein/NKG2-E type II integral membrane protein
Humangene_id :	3821
Humanswissprot_no :	P26715
Immunogen :	The antiserum was produced against synthesized peptide derived from the Internal region of human KLRC1/2/3. AA range:101-150
Specificity :	CD159a/c Polyclonal Antibody detects endogenous levels of CD159a/c protein.
Formulation :	Liquid in PBS containing 50% glycerol, 0.5% BSA and 0.02% sodium azide.
Source :	Rabbit
Dilution :	Western Blot: 1/500 - 1/2000. IHC-p: 1:100-300 ELISA: 1/20000. Not yet tested in other applications.
Purification :	The antibody was affinity-purified from rabbit antiserum by affinity-chromatography using epitope-specific immunogen.
Concentration :	1 mg/ml
Storage_stability :	-20°C/1 year
Msds :	MSDS_Antibody.pdf
Other_name :	KLRC1; NKG2A; NKG2-A/NKG2-B type II integral membrane protein; CD159 antigen-like family member A; NK cell receptor A; NKG2-A/B-activating NK receptor; CD159a; KLRC2; NKG2C; NKG2-C type II integral membrane protein;CD159 antigen-like family member C; NK cell receptor C; NKG2-C-activating NK receptor; CD159c; KLRC3; NKG2E; NKG2-E type II integral membrane protein; NK cell receptor E; NKG2-E-activating NK receptor
Molecular Weight :	25KD



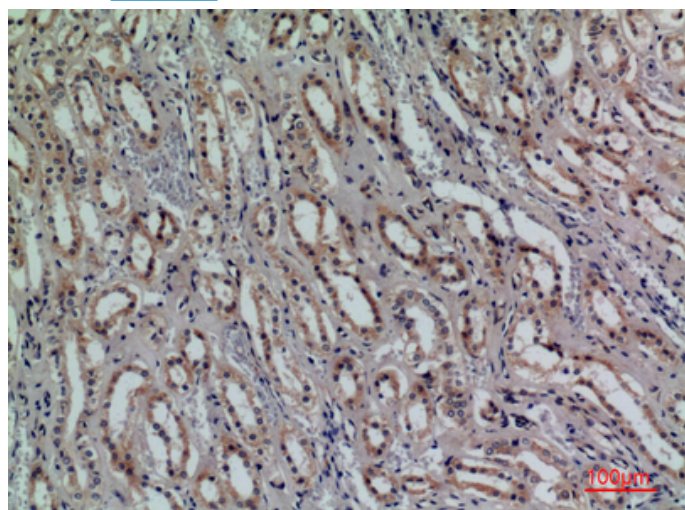
专注二抗产品

Biodragon旗下品牌

Product Images



Western Blot analysis of L929 cells using CD159a/c Polyclonal Antibody.. Secondary antibody was diluted at 1:20000



Immunohistochemical analysis of paraffin-embedded human-kidney, antibody was diluted at 1:100