

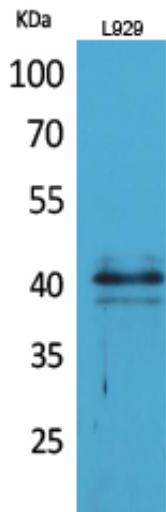
CKR-4 Polyclonal Antibody

Catalog_no :	AT5290
Applications :	WB,IHC-p,ELISA
Reactivity :	Human,Mouse,Rat
Category :	抗原抗体
Size :	100µg/50µg/20µg
Gene_name :	CCR4
Protein_name :	C-C chemokine receptor type 4
Humangene_id :	1233
Humanswissprot_no :	P51679
Mousegene_id :	12773
Mouseswissprot_no :	P51680
Immunogen :	The antiserum was produced against synthesized peptide derived from the N-terminal region of human CCR4. AA range:1-50
Specificity :	CKR-4 Polyclonal Antibody detects endogenous levels of CKR-4 protein.
Formulation :	Liquid in PBS containing 50% glycerol, 0.5% BSA and 0.02% sodium azide.
Source :	Rabbit
Dilution :	Western Blot: 1/500 - 1/2000. IHC-p: 1:100-300 ELISA: 1/20000. Not yet tested in other applications.
Purification :	The antibody was affinity-purified from rabbit antiserum by affinity-chromatography using epitope-specific immunogen.
Concentration :	1 mg/ml
Storage_stability :	-20°C/1 year
Msds :	MSDS_Antibody.pdf
Other_name :	CCR4; CMKBR4; C-C chemokine receptor type 4; C-C CKR-4; CC-CKR-4; CCR-4; CCR4; K5-5; CD194
Molecular	41KD



Weight :

Product Images



Western Blot analysis of L929 cells using CKR-4 Polyclonal Antibody.. Secondary antibody was diluted at 1:20000

