

CDCP1 Polyclonal Antibody

Catalog_no :	AT5291
Applications :	WB,IHC-p,ELISA
Reactivity :	Human,Mouse,Rat
Category :	抗原抗体
Size :	100µg/50µg/20µg
Gene_name :	CDCP1
Protein_name :	CUB domain-containing protein 1
Humangene_id :	64866
Humanswissprot_no :	Q9H5V8
Mousegene_id :	109332
Mouseswissprot_no :	Q5U462
Immunogen :	The antiserum was produced against synthesized peptide derived from the Internal region of human CDCP1. AA range:241-290
Specificity :	CDCP1 Polyclonal Antibody detects endogenous levels of CDCP1 protein.
Formulation :	Liquid in PBS containing 50% glycerol, 0.5% BSA and 0.02% sodium azide.
Source :	Rabbit
Dilution :	Western Blot: 1/500 - 1/2000. IHC-p: 1:100-300 ELISA: 1/20000. Not yet tested in other applications.
Purification :	The antibody was affinity-purified from rabbit antiserum by affinity-chromatography using epitope-specific immunogen.
Concentration :	1 mg/ml
Storage_stability :	-20°C/1 year
Msds :	MSDS_Antibody.pdf
Other_name :	CDCP1; TRASK; CUB domain-containing protein 1; Membrane glycoprotein gp140; Subtractive immunization M plus HEP3-associated 135 kDa protein; SIMA135; Transmembrane and associated with src kinases; CD318



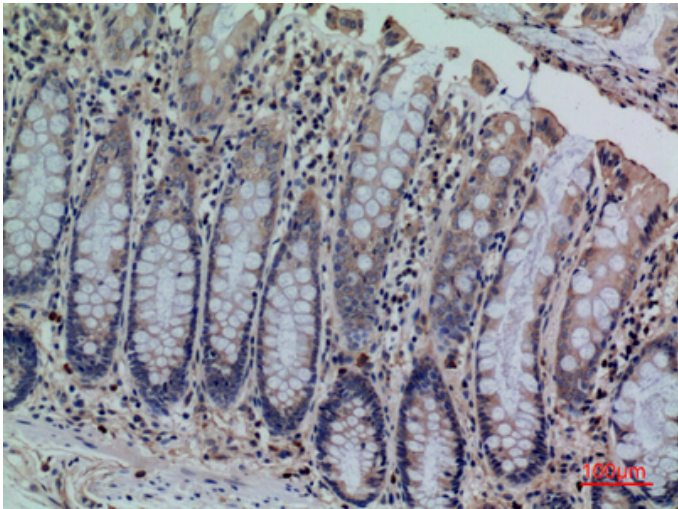
Molecular
Weight :

95KD

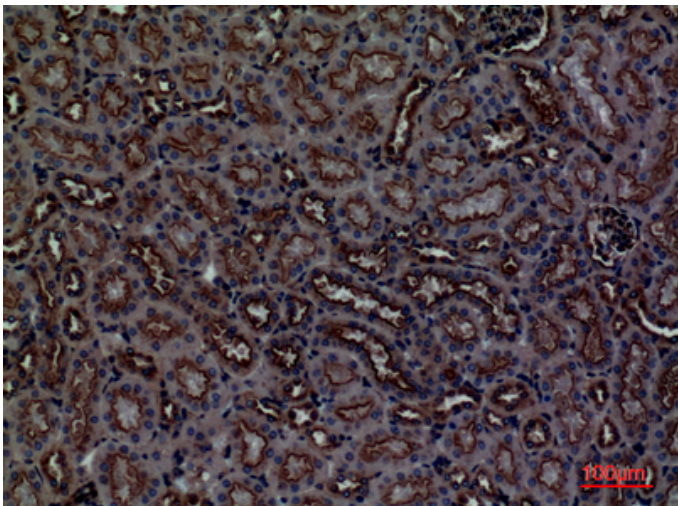
Product Images



Western Blot analysis of 293 cells using CDCP1 Polyclonal Antibody.. Secondary antibody was diluted at 1:20000

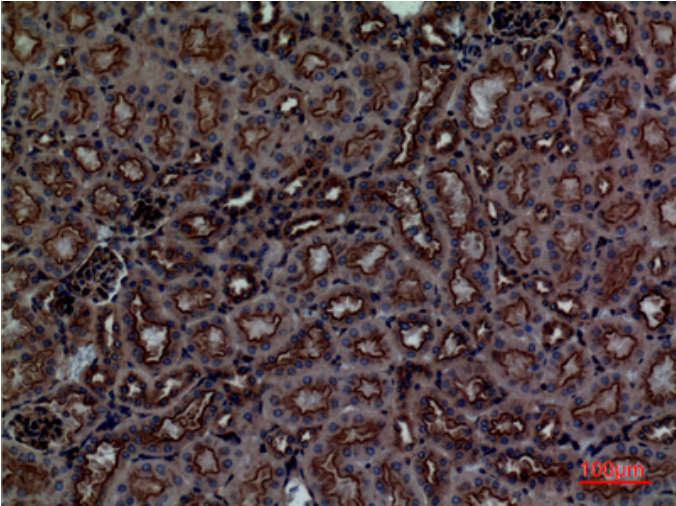


Immunohistochemical analysis of paraffin-embedded human colon, antibody was diluted at 1:100

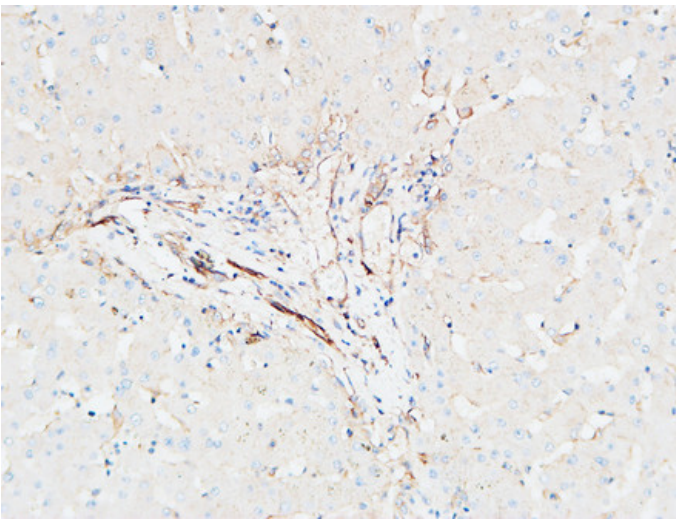


Immunohistochemical analysis of paraffin-embedded mouse kidney, antibody was diluted at 1:100

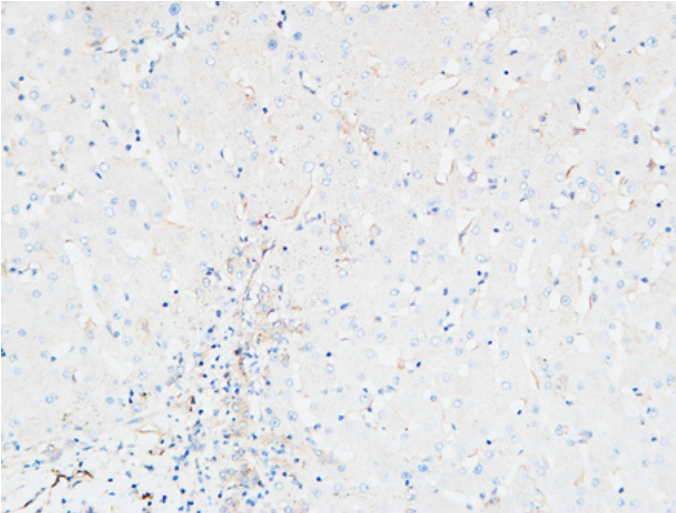
Immunohistochemical analysis of paraffin-embedded mouse kidney, antibody was diluted at 1:100



Immunohistochemical analysis of paraffin-embedded Human Liver. 1, Antibody was diluted at 1:200(4°,overnight). 2, High-pressure and temperature EDTA, pH8.0 was used for antigen retrieval. 3,Secondary antibody was diluted at 1:200(room temperature, 30min).



Immunohistochemical analysis of paraffin-embedded Human Liver. 1, Antibody was diluted at 1:200(4°,overnight). 2, High-pressure and temperature EDTA, pH8.0 was used for antigen retrieval. 3,Secondary antibody was diluted at 1:200(room temperature, 30min).



Immunohistochemical analysis of paraffin-embedded Human Liver. 1, Antibody was diluted at 1:200(4°,overnight). 2, High-pressure and temperature EDTA, pH8.0 was used for antigen retrieval. 3,Secondary antibody was diluted at 1:200(room temperature, 30min).

