



## MCP-2 Polyclonal Antibody

Catalog_no :	<u>AT5293</u>
Applications :	<u>WB,ELISA</u>
Reactivity :	<u>Human</u>
Category :	<u>抗原抗体</u>
Size :	<u>100µg/50µg/20µg</u>
Gene_name :	<u>CCL8</u>
Protein_name :	<u>C-C motif chemokine 8</u>
Humangene_id :	<u><a href="#">6355</a></u>
Humanswissprot_no :	<u><a href="#">P80075</a></u>
Mousegene_id :	<u><a href="#">100503254</a></u>
Mouseswissprot_no :	<u><a href="#">Q9Z121</a></u>
Immunogen :	<u>The antiserum was produced against synthesized peptide derived from the C-terminal region of human CCL8. AA range:50-99</u>
Specificity :	<u>MCP-2 Polyclonal Antibody detects endogenous levels of MCP-2 protein.</u>
Formulation :	<u>Liquid in PBS containing 50% glycerol, 0.5% BSA and 0.02% sodium azide.</u>
Source :	<u>Rabbit</u>
Dilution :	<u>Western Blot: 1/500 - 1/2000. ELISA: 1/20000. Not yet tested in other applications.</u>
Purification :	<u>The antibody was affinity-purified from rabbit antiserum by affinity-chromatography using epitope-specific immunogen.</u>
Concentration :	<u>1 mg/ml</u>
Storage_stability :	<u>-20°C/1 year</u>
Msds :	<u><a href="#">MSDS_Antibody.pdf</a></u>
Other_name :	<u>CCL8; MCP2; SCYA10; SCYA8; C-C motif chemokine 8; HC14; Monocyte chemoattractant protein 2; Monocyte chemotactic protein 2; MCP-2; Small-inducible cytokine A8</u>
Molecular Weight :	<u>15KD</u>

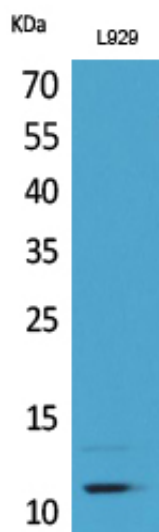


**专注二抗产品**

Biodragon旗下品牌

---

## Product Images



Western Blot analysis of L929 cells using MCP-2 Polyclonal Antibody.. Secondary antibody was diluted at 1:20000