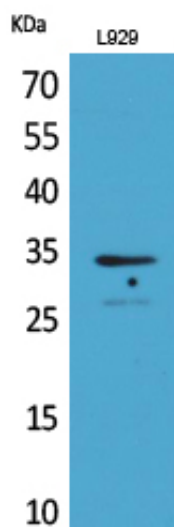




Osteoglycin Polyclonal Antibody

Catalog_no :	<u>AT5294</u>
Applications :	<u>WB,ELISA</u>
Reactivity :	<u>Human,Mouse</u>
Category :	<u>抗原抗体</u>
Size :	<u>100µg/50µg/20µg</u>
Gene_name :	<u>OGN</u>
Protein_name :	<u>Mimecan</u>
Humangene_id :	<u>4969</u>
Humanswissprot_no :	<u>P20774</u>
Mousegene_id :	<u>18295</u>
Mouseswissprot_no :	<u>Q62000</u>
Immunogen :	<u>The antiserum was produced against synthesized peptide derived from the C-terminal region of human OGN. AA range:231-280</u>
Specificity :	<u>Osteoglycin Polyclonal Antibody detects endogenous levels of Osteoglycin protein.</u>
Formulation :	<u>Liquid in PBS containing 50% glycerol, 0.5% BSA and 0.02% sodium azide.</u>
Source :	<u>Rabbit</u>
Dilution :	<u>Western Blot: 1/500 - 1/2000. ELISA: 1/20000. Not yet tested in other applications.</u>
Purification :	<u>The antibody was affinity-purified from rabbit antiserum by affinity-chromatography using epitope-specific immunogen.</u>
Concentration :	<u>1 mg/ml</u>
Storage_stability :	<u>-20°C/1 year</u>
Msds :	<u>MSDS_Antibody.pdf</u>
Other_name :	<u>OGN; OIF; SLRR3A; Mimecan; Osteoglycin; Osteoinductive factor; OIF</u>
Molecular Weight :	<u>35KD</u>

Product Images



Western Blot analysis of L929 cells using Osteoglycin Polyclonal Antibody.. Secondary antibody was diluted at 1:20000