

PSP Polyclonal Antibody

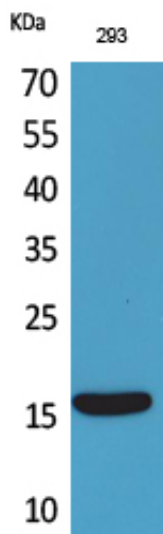
Catalog_no :	<u>AT5295</u>
Applications :	<u>WB,ELISA</u>
Reactivity :	<u>Human</u>
Category :	<u>抗原抗体</u>
Size :	<u>100µg/50µg/20µg</u>
Gene_name :	<u>PSPN</u>
Protein_name :	<u>Persephin</u>
Humangene_id	<u>5623</u>
:	<u></u>
Humanswissprot	<u>O60542</u>
_no :	<u></u>
Mouseswissprot	<u>O70300</u>
_no :	<u></u>
Ratgene_id :	<u>25525</u>
Ratswissprot_no	<u>O70301</u>
:	<u></u>
Immunogen :	<u>The antiserum was produced against synthesized peptide derived from the C-terminal region of human PSPN. AA range:101-150</u>
Specificity :	<u>PSP Polyclonal Antibody detects endogenous levels of PSP protein.</u>
Formulation :	<u>Liquid in PBS containing 50% glycerol, 0.5% BSA and 0.02% sodium azide.</u>
Source :	<u>Rabbit</u>
Dilution :	<u>Western Blot: 1/500 - 1/2000. ELISA: 1/20000. Not yet tested in other applications.</u>
Purification :	<u>The antibody was affinity-purified from rabbit antiserum by affinity-chromatography using epitope-specific immunogen.</u>
Concentration :	<u>1 mg/ml</u>
Storage_stability	<u>-20°C/1 year</u>
:	<u></u>
Msds :	<u>MSDS_Antibody.pdf</u>
Other_name :	<u>PSPN; Persephin; PSP</u>



Molecular
Weight :

16KD

Product Images



Western Blot analysis of 293 cells using PSP Polyclonal Antibody.. Secondary antibody was diluted at 1:20000