



VGF Polyclonal Antibody

| | |
|---------------------|---|
| Catalog_no : | <u>AT5296</u> |
| Applications : | <u>WB,IHC-p,ELISA</u> |
| Reactivity : | <u>Human,Mouse,Rat</u> |
| Category : | <u>抗原抗体</u> |
| Size : | <u>100µg/50µg/20µg</u> |
| Gene_name : | <u>VGF</u> |
| Protein_name : | <u>Neurosecretory protein VGF</u> |
| Humangene_id : | <u>7425</u> |
| Humanswissprot_no : | <u>O15240</u> |
| Ratgene_id : | <u>29461</u> |
| Ratswissprot_no : | <u>P20156</u> |
| Immunogen : | <u>The antiserum was produced against synthesized peptide derived from the Internal region of human VGF. AA range:451-500</u> |
| Specificity : | <u>VGF Polyclonal Antibody detects endogenous levels of VGF protein.</u> |
| Formulation : | <u>Liquid in PBS containing 50% glycerol, 0.5% BSA and 0.02% sodium azide.</u> |
| Source : | <u>Rabbit</u> |
| Dilution : | <u>Western Blot: 1/500 - 1/2000. IHC-p: 1/100-1/300. ELISA: 1/20000. Not yet tested in other applications.</u> |
| Purification : | <u>The antibody was affinity-purified from rabbit antiserum by affinity-chromatography using epitope-specific immunogen.</u> |
| Concentration : | <u>1 mg/ml</u> |
| Storage_stability : | <u>-20°C/1 year</u> |
| Msds : | <u>MSDS_Antibody.pdf</u> |
| Other_name : | <u>VGF; Neurosecretory protein VGF</u> |
| Molecular Weight : | <u>67KD</u> |



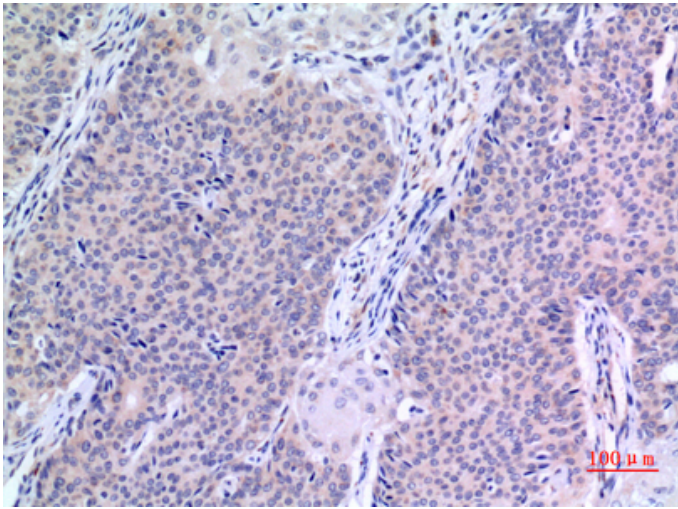
专注二抗产品

Biodragon旗下品牌

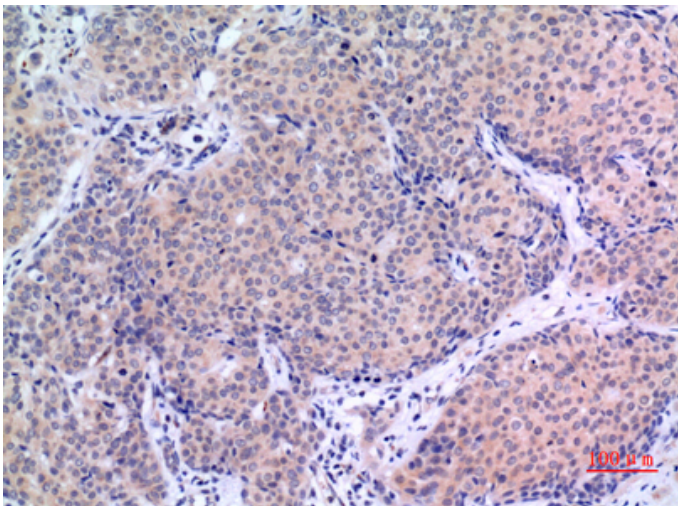
Product Images



Western Blot analysis of 293 cells using VGF Polyclonal Antibody.. Secondary antibody was diluted at 1:20000

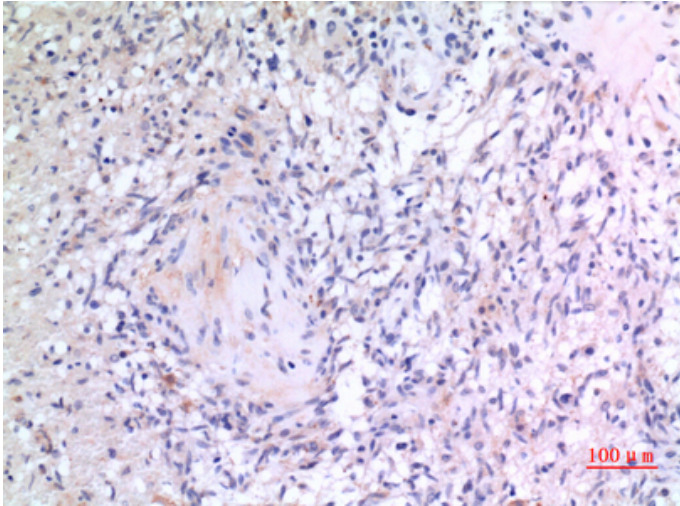


Immunohistochemical analysis of paraffin-embedded human-mammary-cancer, antibody was diluted at 1:100



Immunohistochemical analysis of paraffin-embedded human-mammary-cancer, antibody was diluted at 1:100

Immunohistochemical analysis of paraffin-embedded human-brain, antibody was diluted at 1:100



Immunohistochemical analysis of paraffin-embedded human-brain, antibody was diluted at 1:100

