



## VEGF-C Polyclonal Antibody

Catalog_no :	<u>AT5297</u>
Applications :	<u>WB,IHC-p,ELISA</u>
Reactivity :	<u>Human,Mouse,Rat</u>
Category :	<u>抗原抗体</u>
Size :	<u>100µg/50µg/20µg</u>
Gene_name :	<u>VEGFC</u>
Protein_name :	<u>Vascular endothelial growth factor C</u>
Humangene_id :	<u><a href="#">7424</a></u>
Humanswissprot_no :	<u><a href="#">P49767</a></u>
Mousegene_id :	<u><a href="#">22341</a></u>
Mouseswissprot_no :	<u><a href="#">P97953</a></u>
Ratgene_id :	<u><a href="#">114111</a></u>
Ratswissprot_no :	<u><a href="#">O35757</a></u>
Immunogen :	<u>The antiserum was produced against synthesized peptide derived from the Internal region of human VEGFC. AA range:91-140</u>
Specificity :	<u>VEGF-C Polyclonal Antibody detects endogenous levels of VEGF-C protein.</u>
Formulation :	<u>Liquid in PBS containing 50% glycerol, 0.5% BSA and 0.02% sodium azide.</u>
Source :	<u>Rabbit</u>
Dilution :	<u>Western Blot: 1/500 - 1/2000. IHC-p: 1/100-1/300. ELISA: 1/20000. Not yet tested in other applications.</u>
Purification :	<u>The antibody was affinity-purified from rabbit antiserum by affinity-chromatography using epitope-specific immunogen.</u>
Concentration :	<u>1 mg/ml</u>
Storage_stability :	<u>-20°C/1 year</u>
Msds :	<u>MSDS_Antibody.pdf</u>



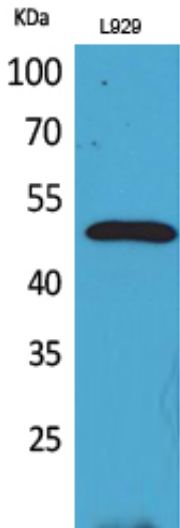
Other\_name : VEGFC; Vascular endothelial growth factor C; VEGF-C; Flt4 ligand; Flt4-L; Vascular endothelial growth factor-related protein; VRP

---

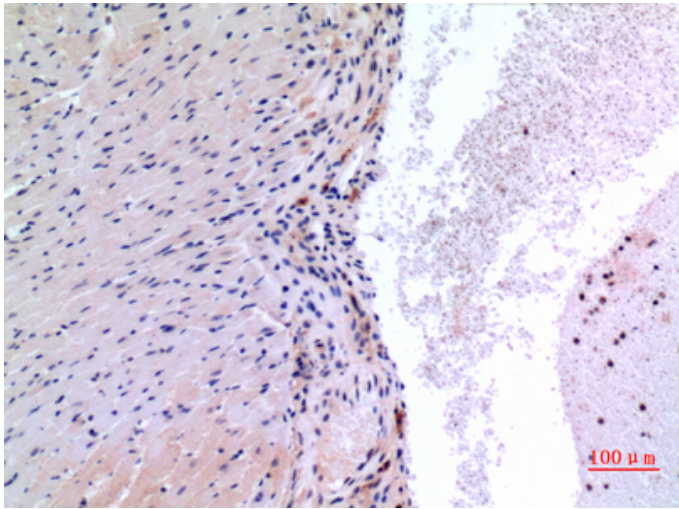
Molecular Weight : 42KD

---

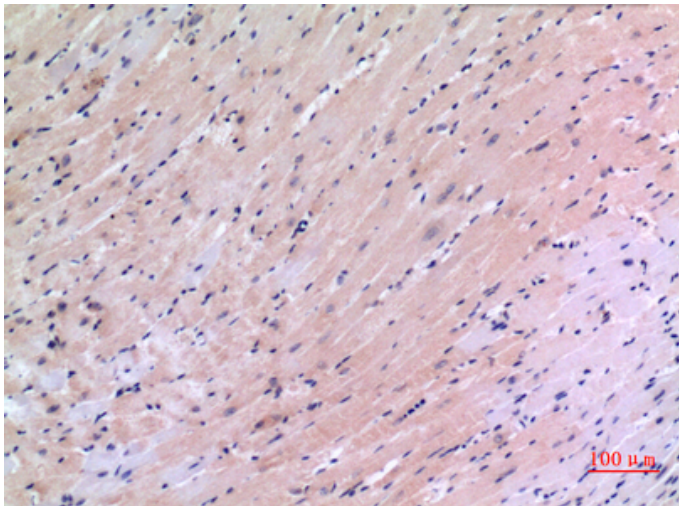
## Product Images



Western Blot analysis of L929 cells using VEGF-C Polyclonal Antibody. Antibody was diluted at 1:2000. Secondary antibody was diluted at 1:20000

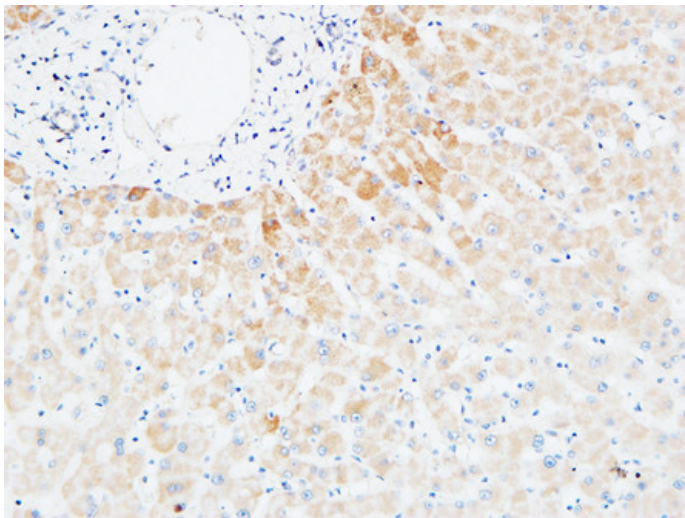
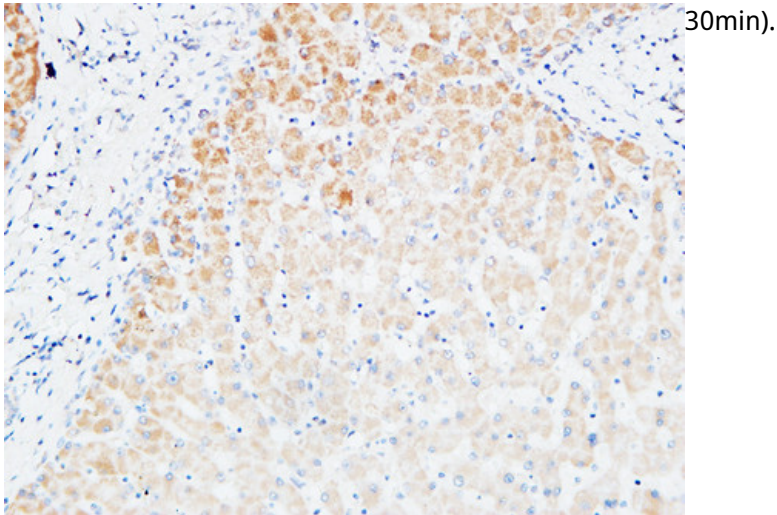


Immunohistochemical analysis of paraffin-embedded mouse-heart, antibody was diluted at 1:100

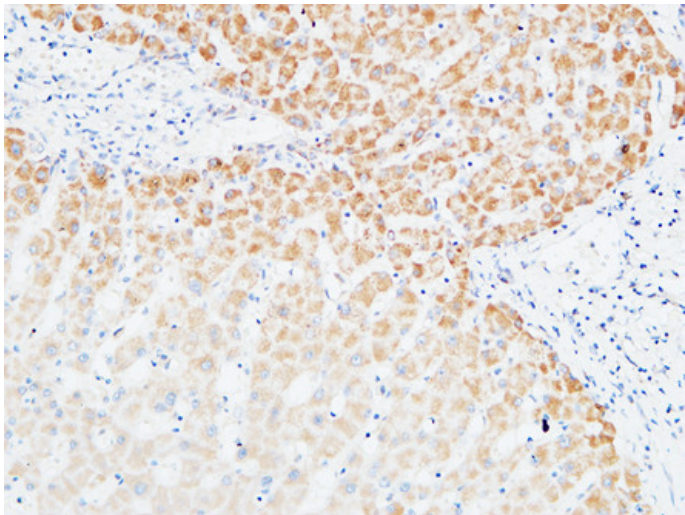


Immunohistochemical analysis of paraffin-embedded mouse-heart, antibody was diluted at 1:100

Immunohistochemical analysis of paraffin-embedded Human Liver. 1, Antibody was diluted at 1:200(4°,overnight). 2, High-pressure and temperature EDTA, pH8.0 was used for antigen retrieval. 3,Secondary antibody was diluted at 1:200(room temperature,

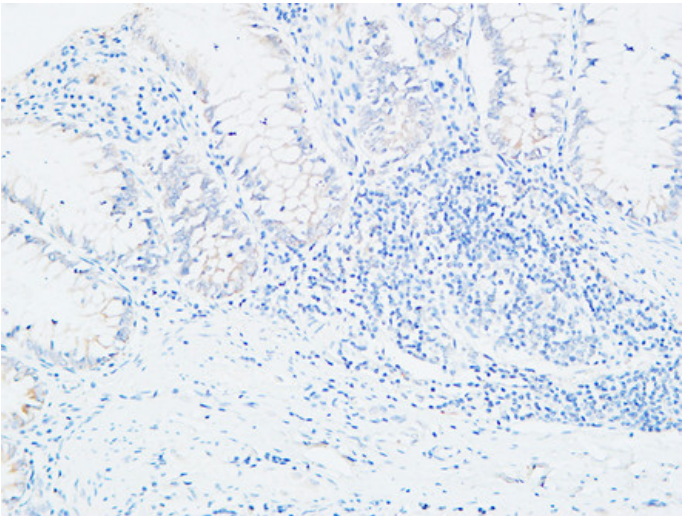
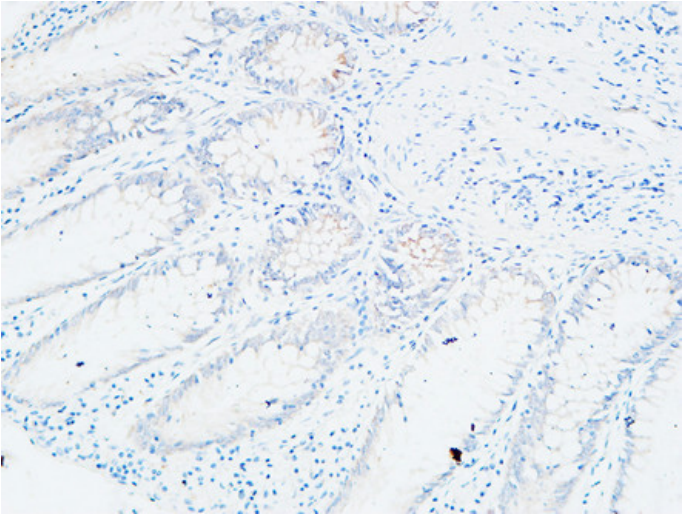


Immunohistochemical analysis of paraffin-embedded Human Liver. 1, Antibody was diluted at 1:200(4°,overnight). 2, High-pressure and temperature EDTA, pH8.0 was used for antigen retrieval. 3,Secondary antibody was diluted at 1:200(room temperature, 30min).

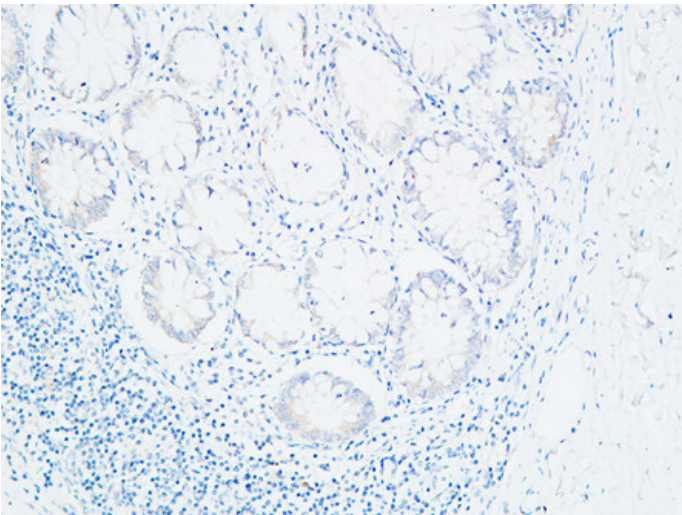


Immunohistochemical analysis of paraffin-embedded Human Liver. 1, Antibody was diluted at 1:200(4°,overnight). 2, High-pressure and temperature EDTA, pH8.0 was used for antigen retrieval. 3,Secondary antibody was diluted at 1:200(room temperature, 30min).

Immunohistochemical analysis of paraffin-embedded Human colon. 1, Antibody was diluted at 1:200(4°,overnight). 2, High-pressure and temperature EDTA, pH8.0 was used for antigen retrieval. 3,Secondary antibody was diluted at 1:200(room temperature, 30min).



Immunohistochemical analysis of paraffin-embedded Human colon. 1, Antibody was diluted at 1:200(4°,overnight). 2, High-pressure and temperature EDTA, pH8.0 was used for antigen retrieval. 3,Secondary antibody was diluted at 1:200(room temperature, 30min).



Immunohistochemical analysis of paraffin-embedded Human colon. 1, Antibody was diluted at 1:200(4°,overnight). 2, High-pressure and temperature EDTA, pH8.0 was used for antigen retrieval. 3,Secondary antibody was diluted at 1:200(room temperature, 30min).