

PDGF-D Polyclonal Antibody

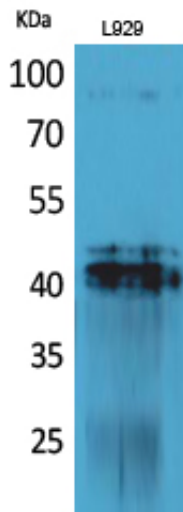
Catalog_no :	AT5299
Applications :	WB,IHC-p,ELISA
Reactivity :	Human
Category :	抗原抗体
Size :	100µg/50µg/20µg
Gene_name :	PDGFD
Protein_name :	Platelet-derived growth factor D
Humangene_id :	80310
Humanswissprot_no :	Q9GZP0
Mousegene_id :	71785
Mouseswissprot_no :	Q925I7
Ratgene_id :	66018
Ratswissprot_no :	Q9EQT1
Immunogen :	The antiserum was produced against synthesized peptide derived from the C-terminal region of human PDGFD. AA range:311-360
Specificity :	PDGF-D Polyclonal Antibody detects endogenous levels of PDGF-D protein.
Formulation :	Liquid in PBS containing 50% glycerol, 0.5% BSA and 0.02% sodium azide.
Source :	Rabbit
Dilution :	Western Blot: 1/500 - 1/2000. IHC-p: 1/100-1/300. ELISA: 1/20000. Not yet tested in other applications.
Purification :	The antibody was affinity-purified from rabbit antiserum by affinity-chromatography using epitope-specific immunogen.
Concentration :	1 mg/ml
Storage_stability :	-20°C/1 year
Msds :	MSDS_Antibody.pdf



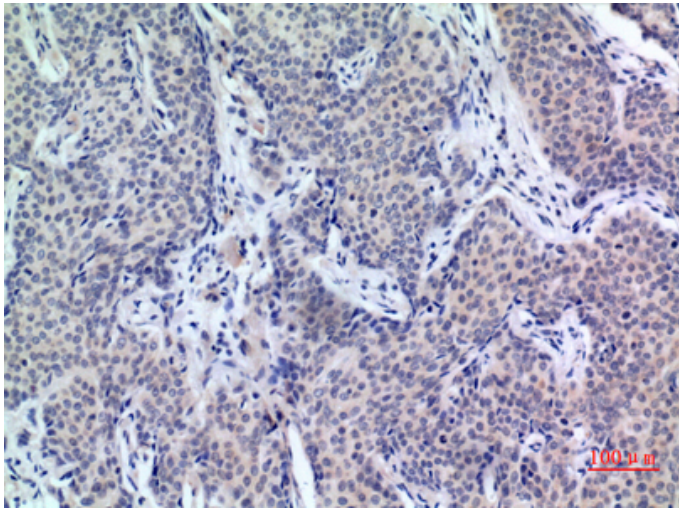
Other_name : PDGFD; IEGF; SCDGFB; MSTP036; Platelet-derived growth factor D; PDGF-D; Iris-expressed growth factor; Spinal cord-derived growth factor B; SCDGF-B

Molecular Weight : 42KD

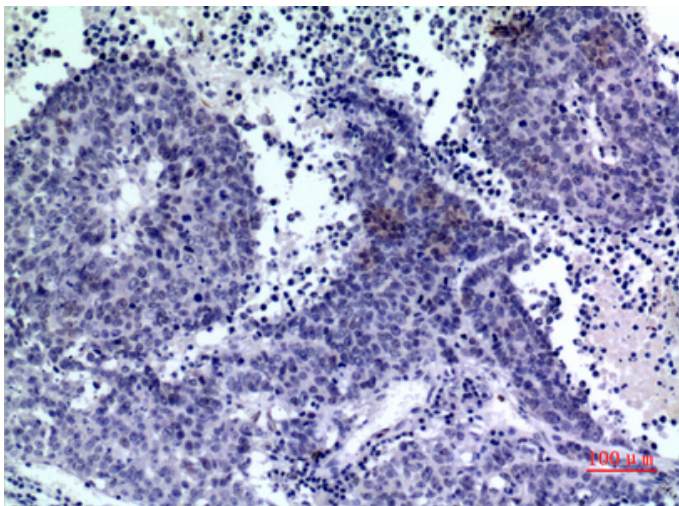
Product Images



Western Blot analysis of L929 cells using PDGF-D Polyclonal Antibody.. Secondary antibody was diluted at 1:20000



Immunohistochemical analysis of paraffin-embedded human-mammary-cancer, antibody was diluted at 1:100



Immunohistochemical analysis of paraffin-embedded human-lung-cancer, antibody was diluted at 1:100