

Inhibin β -E Polyclonal Antibody

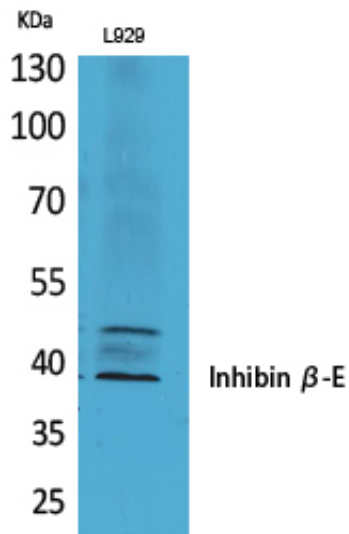
Catalog_no :	<u>AT5300</u>
Applications :	<u>WB,IHC-p,ELISA</u>
Reactivity :	<u>Human,Mouse,Rat</u>
Category :	<u>抗原抗体</u>
Size :	<u>100μg/50μg/20μg</u>
Gene_name :	<u>INHBE</u>
Protein_name :	<u>Inhibin beta E chain</u>
Humangene_id :	<u>83729</u>
Humanswissprot_no :	<u>P58166</u>
Mousegene_id :	<u>16326</u>
Mouseswissprot_no :	<u>O08717</u>
Ratgene_id :	<u>83711</u>
Ratswissprot_no :	<u>O88959</u>
Immunogen :	<u>The antiserum was produced against synthesized peptide derived from the C-terminal region of human INHBE. AA range:301-350</u>
Specificity :	<u>Inhibin β-E Polyclonal Antibody detects endogenous levels of Inhibin β-E protein.</u>
Formulation :	<u>Liquid in PBS containing 50% glycerol, 0.5% BSA and 0.02% sodium azide.</u>
Source :	<u>Rabbit</u>
Dilution :	<u>Western Blot: 1/500 - 1/2000. IHC-p: 1/100-1/300. ELISA: 1/20000. Not yet tested in other applications.</u>
Purification :	<u>The antibody was affinity-purified from rabbit antiserum by affinity-chromatography using epitope-specific immunogen.</u>
Concentration :	<u>1 mg/ml</u>
Storage_stability :	<u>-20°C/1 year</u>
Msds :	<u>MSDS_Antibody.pdf</u>



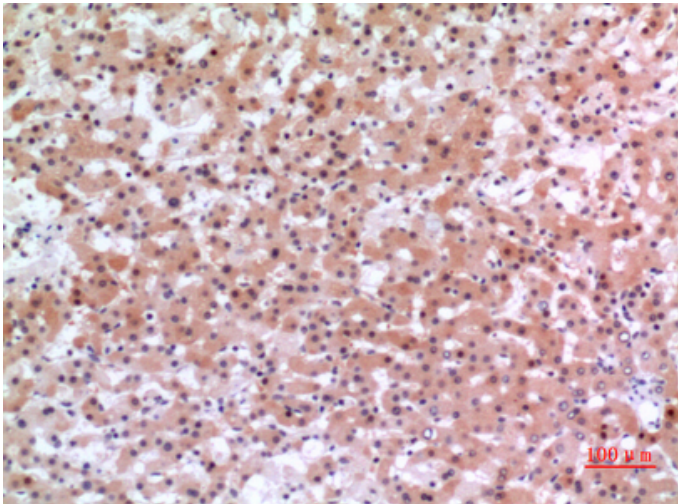
Other_name : INHBE; Inhibin beta E chain; Activin beta-E chain

Molecular Weight : 38KD

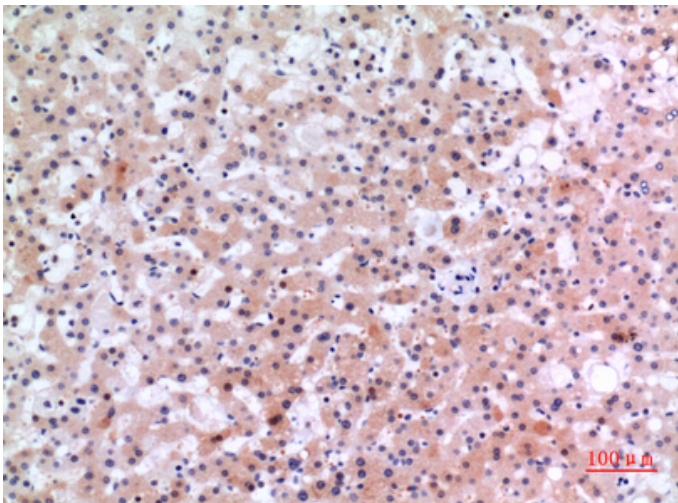
Product Images



Western Blot analysis of L929 cells using Inhibin β -E Polyclonal Antibody. Antibody was diluted at 1:500. Secondary antibody was diluted at 1:20000

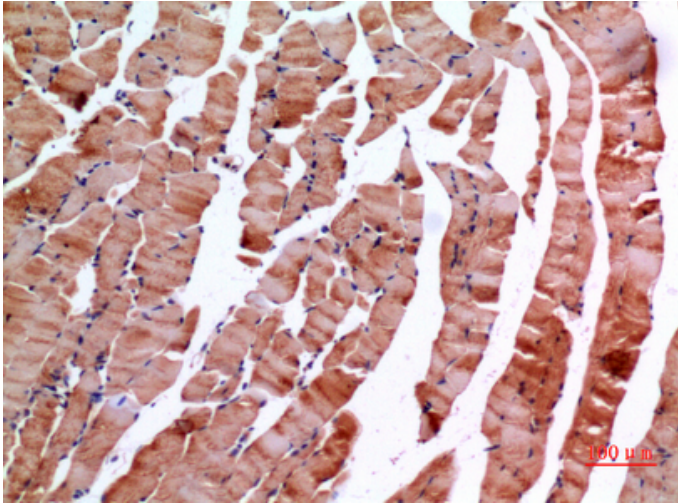


Immunohistochemical analysis of paraffin-embedded human-liver, antibody was diluted at 1:100



Immunohistochemical analysis of paraffin-embedded human-liver, antibody was diluted at 1:100

Immunohistochemical analysis of paraffin-embedded mouse-muscle, antibody was diluted at 1:100



Immunohistochemical analysis of paraffin-embedded mouse-muscle, antibody was diluted at 1:100

