



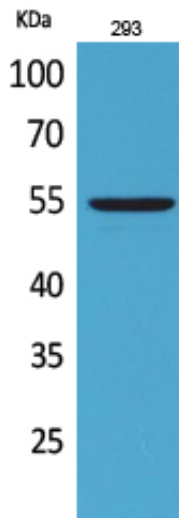
GDF-5 Polyclonal Antibody

Catalog_no :	AT5302
Applications :	WB,IHC-p,ELISA
Reactivity :	Human,Mouse,Rat
Category :	抗原抗体
Size :	100µg/50µg/20µg
Gene_name :	GDF5
Protein_name :	Growth/differentiation factor 5
Humangene_id :	8200
Humanswissprot_no :	P43026
Mousegene_id :	14563
Mouseswissprot_no :	P43027
Immunogen :	The antiserum was produced against synthesized peptide derived from the Internal region of human GDF5. AA range:361-410
Specificity :	GDF-5 Polyclonal Antibody detects endogenous levels of GDF-5 protein.
Formulation :	Liquid in PBS containing 50% glycerol, 0.5% BSA and 0.02% sodium azide.
Source :	Rabbit
Dilution :	Western Blot: 1/500 - 1/2000. IHC-p: 1/100-1/300. ELISA: 1/20000. Not yet tested in other applications.
Purification :	The antibody was affinity-purified from rabbit antiserum by affinity-chromatography using epitope-specific immunogen.
Concentration :	1 mg/ml
Storage_stability :	-20°C/1 year
Msds :	MSDS_Antibody.pdf
Other_name :	GDF5; CDMP1; Growth/differentiation factor 5; GDF-5; Cartilage-derived morphogenetic protein 1; CDMP-1; Radotermin
Molecular	55KD

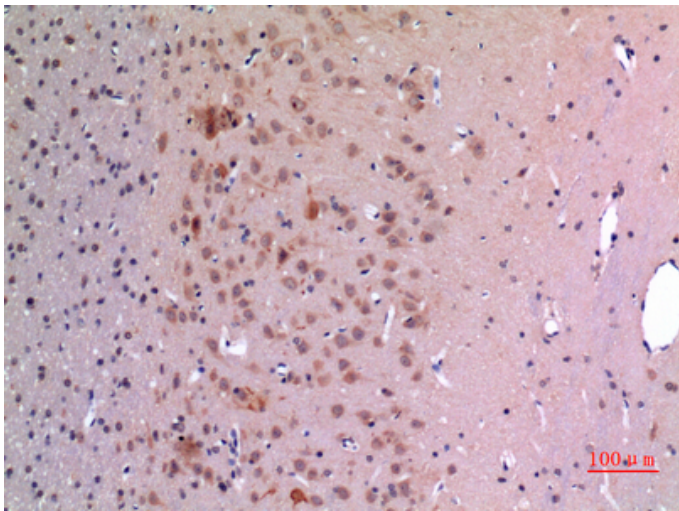


Weight :

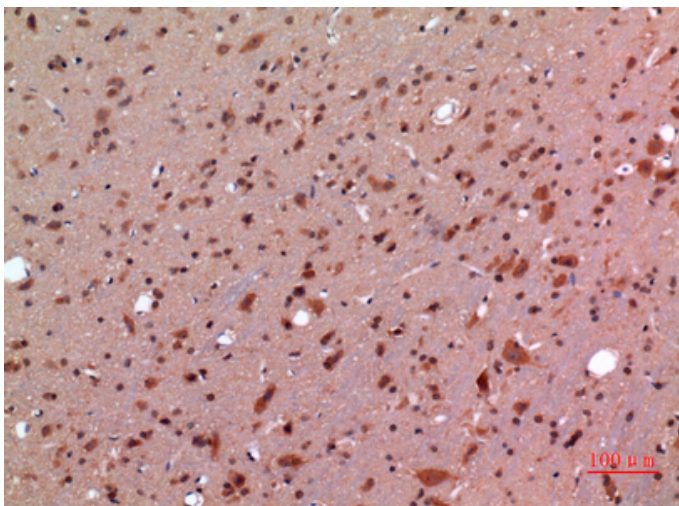
Product Images



Western Blot analysis of 293 cells using GDF-5 Polyclonal Antibody.. Secondary antibody was diluted at 1:20000



Immunohistochemical analysis of paraffin-embedded rat-brain, antibody was diluted at 1:100



Immunohistochemical analysis of paraffin-embedded rat-brain, antibody was diluted at 1:100

Immunohistochemical analysis of paraffin-embedded mouse-brain, antibody was diluted at 1:100

