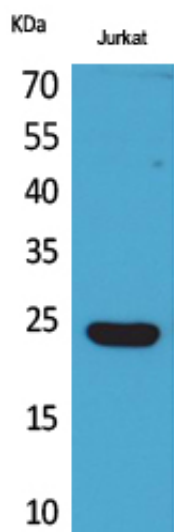




IFN-ε Polyclonal Antibody

Catalog_no :	<u>AT5304</u>
Applications :	<u>WB,ELISA</u>
Reactivity :	<u>Human</u>
Category :	<u>抗原抗体</u>
Size :	<u>100μg/50μg/20μg</u>
Gene_name :	<u>IFNE</u>
Protein_name :	<u>Interferon epsilon</u>
Humangene_id :	<u>338376</u>
Humanswissprot_no :	<u>Q86WN2</u>
Mousegene_id :	<u>230405</u>
Mouseswissprot_no :	<u>Q80ZF2</u>
Immunogen :	<u>The antiserum was produced against synthesized peptide derived from the C-terminal region of human IFNE. AA range:159-208</u>
Specificity :	<u>IFN-ε Polyclonal Antibody detects endogenous levels of IFN-ε protein.</u>
Formulation :	<u>Liquid in PBS containing 50% glycerol, 0.5% BSA and 0.02% sodium azide.</u>
Source :	<u>Rabbit</u>
Dilution :	<u>Western Blot: 1/500 - 1/2000. ELISA: 1/20000. Not yet tested in other applications.</u>
Purification :	<u>The antibody was affinity-purified from rabbit antiserum by affinity-chromatography using epitope-specific immunogen.</u>
Concentration :	<u>1 mg/ml</u>
Storage_stability :	<u>-20°C/1 year</u>
Msds :	<u>MSDS_Antibody.pdf</u>
Other_name :	<u>IFNE; IFNE1; Interferon epsilon; IFN-epsilon; Interferon epsilon-1</u>
Molecular Weight :	<u>24KD</u>

Product Images



Western Blot analysis of Jurkat cells using IFN- ϵ Polyclonal Antibody.. Secondary antibody was diluted at 1:20000