

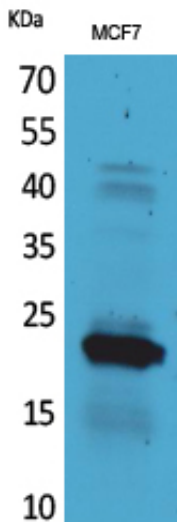
IL-28 Polyclonal Antibody

Catalog_no :	AT5305
Applications :	WB,IHC-p,ELISA
Reactivity :	Human
Category :	抗原抗体
Size :	100µg/50µg/20µg
Gene_name :	IL28A
Protein_name :	Interleukin-28A
Humangene_id :	282616
Humanswissprot_no :	Q8IZJ0
Mousegene_id :	330496
Mouseswissprot_no :	Q4VK74
Immunogen :	The antiserum was produced against synthesized peptide derived from the C-terminal region of human IL28A. AA range:131-180
Specificity :	IL-28 Polyclonal Antibody detects endogenous levels of IL-28 protein.
Formulation :	Liquid in PBS containing 50% glycerol, 0.5% BSA and 0.02% sodium azide.
Source :	Rabbit
Dilution :	Western Blot: 1/500 - 1/2000. IHC-p: 1/100-1/300. ELISA: 1/20000. Not yet tested in other applications.
Purification :	The antibody was affinity-purified from rabbit antiserum by affinity-chromatography using epitope-specific immunogen.
Concentration :	1 mg/ml
Storage_stability :	-20°C/1 year
Msds :	MSDS_Antibody.pdf
Other_name :	IL28A; IFNL2; ZCYTO20; Interleukin-28A; IL-28A; Cytokine Zcyto20; Interferon lambda-2; IFN-lambda-2
Molecular	25KD

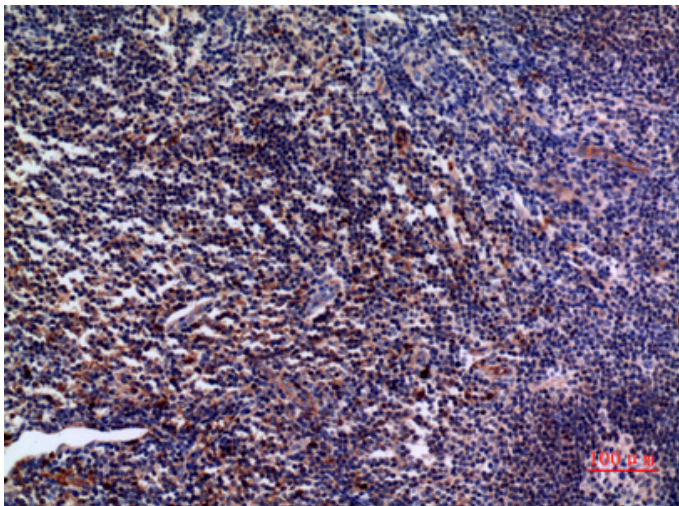


Weight :

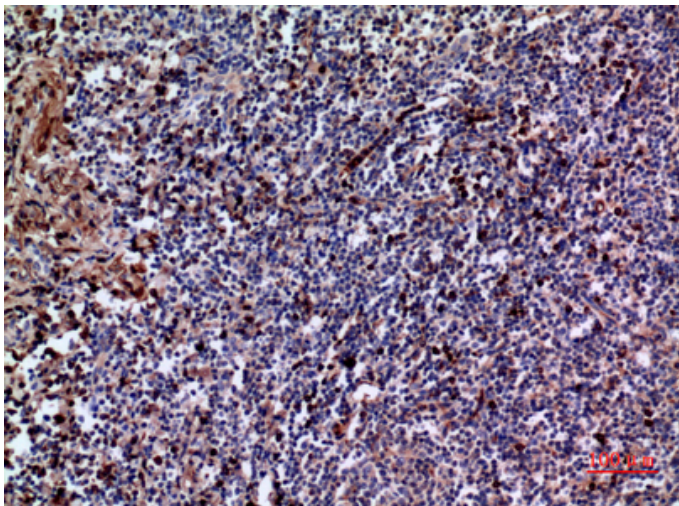
Product Images



Western Blot analysis of MCF7 cells using IL-28 Polyclonal Antibody.. Secondary antibody was diluted at 1:20000

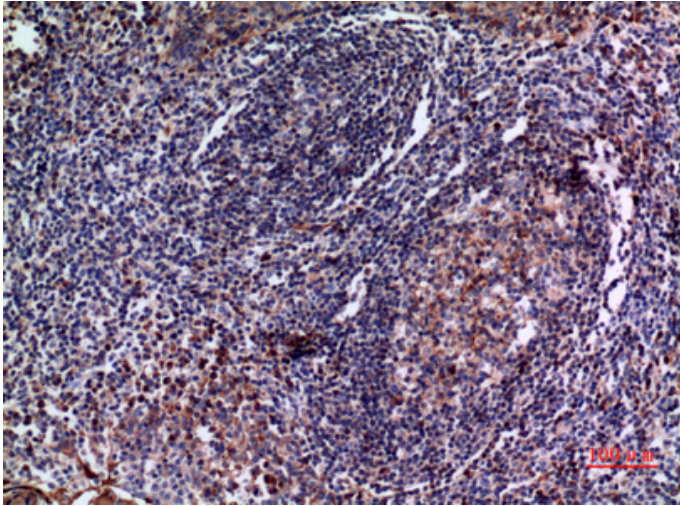


Immunohistochemical analysis of paraffin-embedded human tonsil, antibody was diluted at 1:100

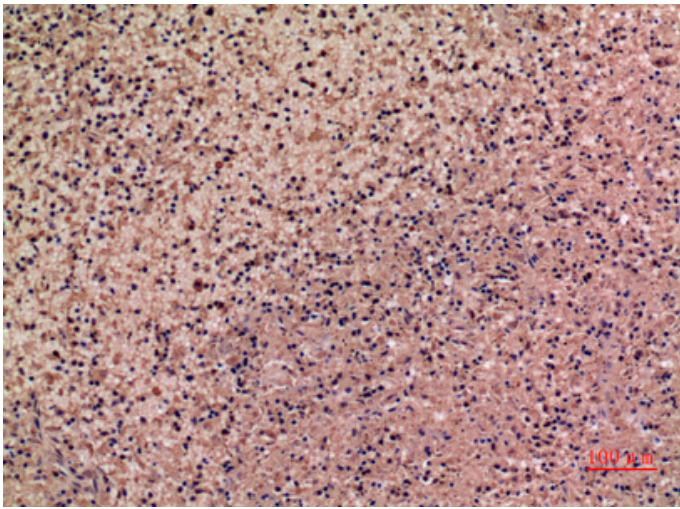


Immunohistochemical analysis of paraffin-embedded human tonsil, antibody was diluted at 1:100

Immunohistochemical analysis of paraffin-embedded human tonsil, antibody was diluted at 1:100



Immunohistochemical analysis of paraffin-embedded human-spleen, antibody was diluted at 1:100



Immunohistochemical analysis of paraffin-embedded human-spleen, antibody was diluted at 1:100

