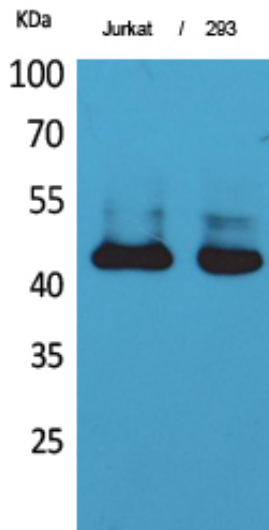


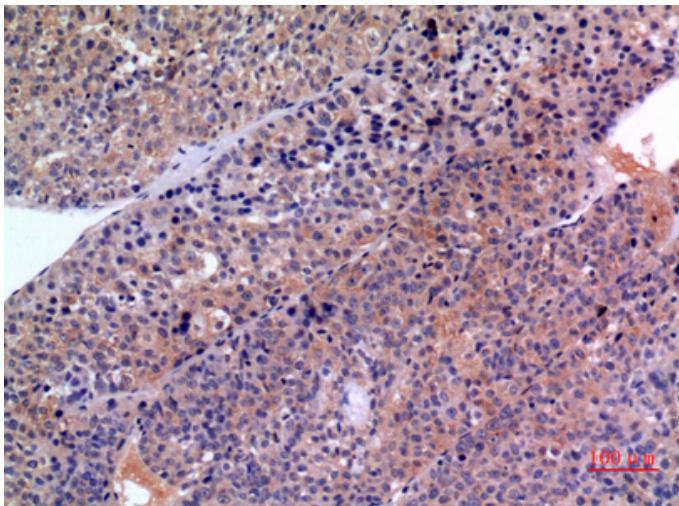
SCCA1/2 Polyclonal Antibody

Catalog_no :	AT5310
Applications :	WB,IHC-p,ELISA
Reactivity :	Human
Category :	抗原抗体
Size :	100µg/50µg/20µg
Gene_name :	SERPINB3/SERPINB4
Protein_name :	Serpin B3/Serpin B4
Humangene_id :	6317
Humanswissprot_no :	P29508
Immunogen :	The antiserum was produced against synthesized peptide derived from the Internal region of human SERPINB3/4. AA range:111-160
Specificity :	SCCA1/2 Polyclonal Antibody detects endogenous levels of SCCA1/2 protein.
Formulation :	Liquid in PBS containing 50% glycerol, 0.5% BSA and 0.02% sodium azide.
Source :	Rabbit
Dilution :	Western Blot: 1/500 - 1/2000. IHC-p: 1/100-1/300. ELISA: 1/20000. Not yet tested in other applications.
Purification :	The antibody was affinity-purified from rabbit antiserum by affinity-chromatography using epitope-specific immunogen.
Concentration :	1 mg/ml
Storage_stability :	-20°C/1 year
Msds :	MSDS_Antibody.pdf
Other_name :	SERPINB3; SCCA; SCCA1; Serpin B3; Protein T4-A; Squamous cell carcinoma antigen 1; SCCA-1
Molecular Weight :	45KD

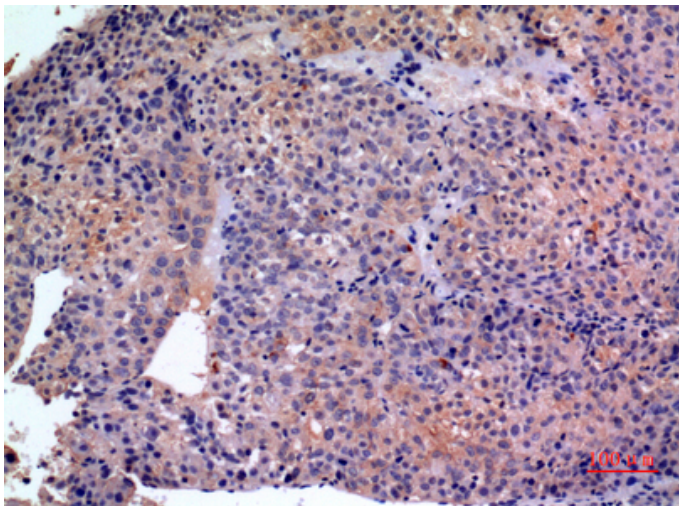
Product Images



Western Blot analysis of Jurkat, 293 cells using SCCA1/2 Polyclonal Antibody.. Secondary antibody was diluted at 1:20000

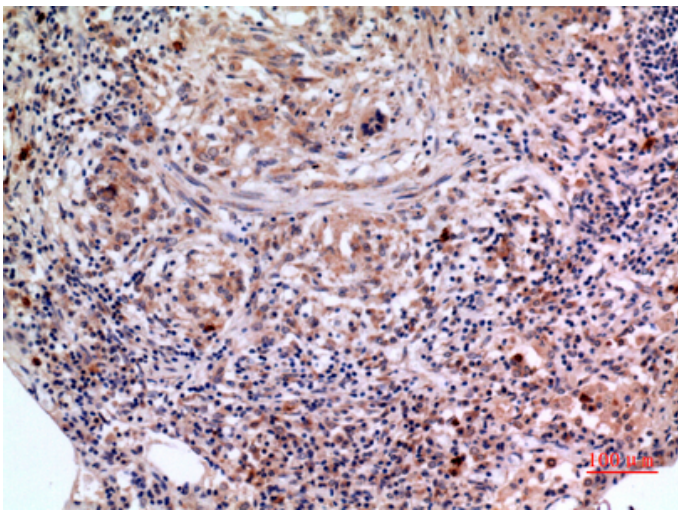
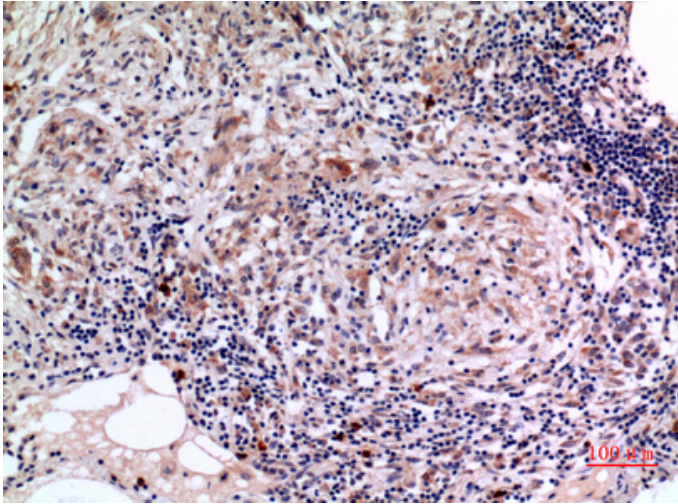


Immunohistochemical analysis of paraffin-embedded human-liver-cancer, antibody was diluted at 1:100



Immunohistochemical analysis of paraffin-embedded human-liver-cancer, antibody was diluted at 1:100

Immunohistochemical analysis of paraffin-embedded human-lung, antibody was diluted at 1:100



Immunohistochemical analysis of paraffin-embedded human-lung, antibody was diluted at 1:100