



## Pax-5 Polyclonal Antibody

|                     |  |
|---------------------|--|
| Catalog_no :        | <u>AT5312</u>  |
| Applications :      | <u>WB,IHC-p,ELISA</u>  |
| Reactivity :        | <u>Human,Mouse</u>   |
| Category :          | <u>抗原抗体</u>  |
| Size :              | <u>100µg/50µg/20µg</u>   |
| Gene_name :         | <u>PAX5</u>  |
| Protein_name :      | <u>Paired box protein Pax-5</u>  |
| Humangene_id :      | <u><a href="#">5079</a></u>  |
| Humanswissprot_no : | <u><a href="#">Q02548</a></u>  |
| Mousegene_id :      | <u><a href="#">18507</a></u>   |
| Mouseswissprot_no : | <u><a href="#">Q02650</a></u>  |
| Immunogen :         | <u>The antiserum was produced against synthesized peptide derived from the Internal region of human PAX5. AA range:171-220</u> |
| Specificity :       | <u>Pax-5 Polyclonal Antibody detects endogenous levels of Pax-5 protein.</u>   |
| Formulation :       | <u>Liquid in PBS containing 50% glycerol, 0.5% BSA and 0.02% sodium azide.</u>   |
| Source :            | <u>Rabbit</u>  |
| Dilution :          | <u>Western Blot: 1/500 - 1/2000. IHC-p: 1/100-1/300. ELISA: 1/20000. Not yet tested in other applications.</u>                 |
| Purification :      | <u>The antibody was affinity-purified from rabbit antiserum by affinity-chromatography using epitope-specific immunogen.</u>   |
| Concentration :     | <u>1 mg/ml</u>   |
| Storage_stability : | <u>-20°C/1 year</u>  |
| Msds :              | <u><a href="#">MSDS_Antibody.pdf</a></u>   |
| Other_name :        | <u>PAX5; Paired box protein Pax-5; B-cell-specific transcription factor; BSAP</u>  |
| Molecular Weight :  | <u>42KD</u>  |



**专注二抗产品**

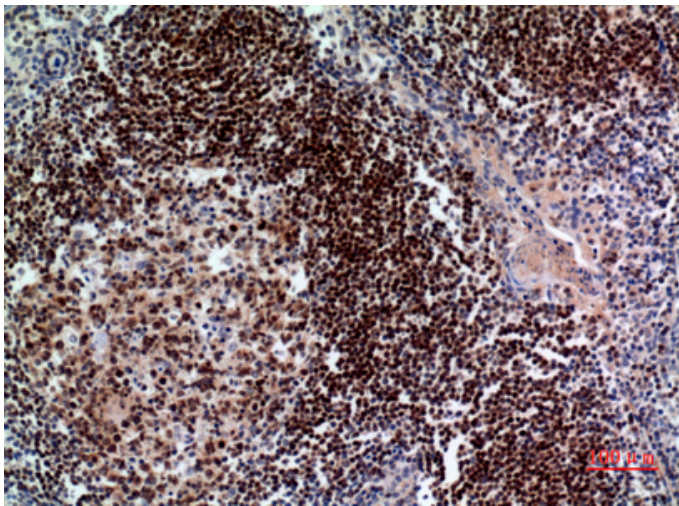
Biodragon旗下品牌

---

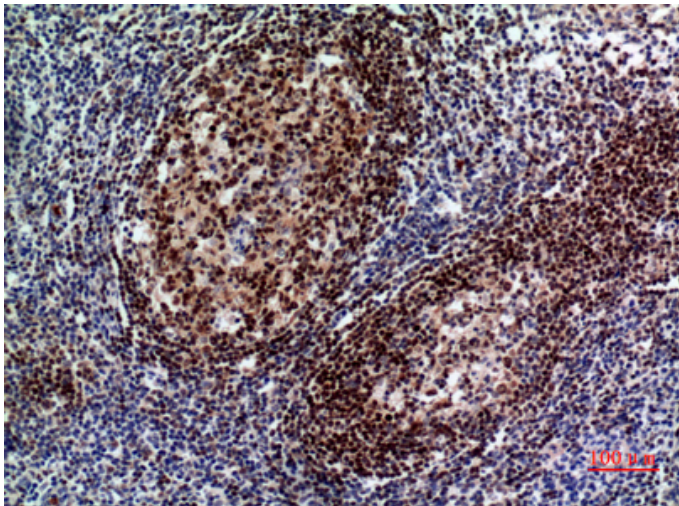
## Product Images



Western Blot analysis of 293 cells using Pax-5 Polyclonal Antibody.. Secondary antibody was diluted at 1:20000 cells nucleus extracted by Minute TM Cytoplasmic and Nuclear Fractionation kit (SC-003, Inventbiotech, MN, USA).

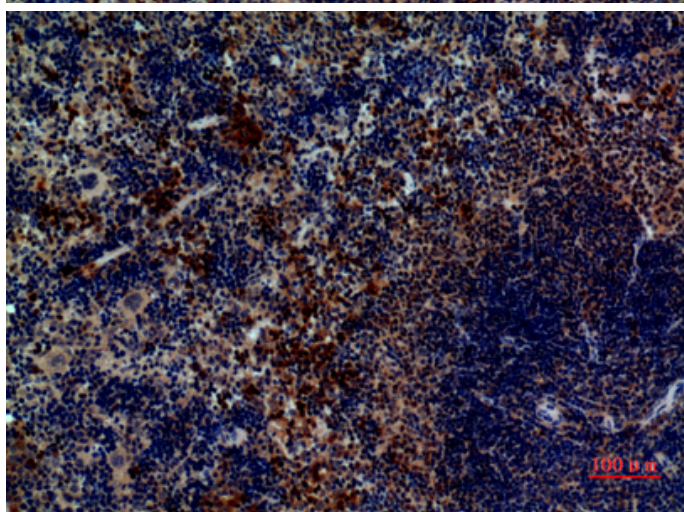
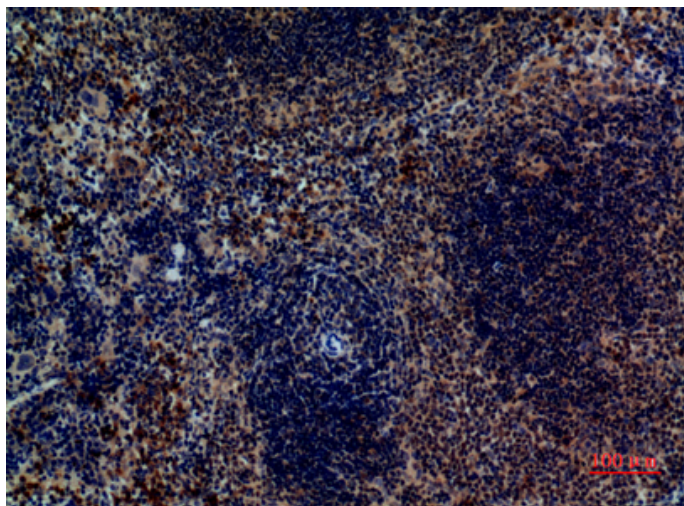


Immunohistochemical analysis of paraffin-embedded human tonsil, antibody was diluted at 1:100



Immunohistochemical analysis of paraffin-embedded mouse spleen, antibody was diluted at 1:100

Immunohistochemical analysis of paraffin-embedded mouse spleen, antibody was diluted at 1:100



Immunohistochemical analysis of paraffin-embedded mouse-spleen, antibody was diluted at 1:100