

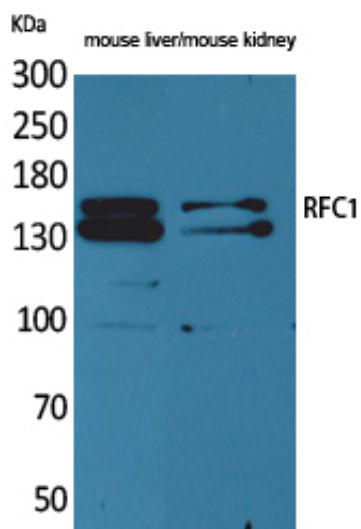
RFC1 Polyclonal Antibody

Catalog_no :	<u>AT5314</u>
Applications :	<u>WB,ELISA</u>
Reactivity :	<u>Human,Mouse,Rat</u>
Category :	<u>抗原抗体</u>
Size :	<u>100µg/50µg/20µg</u>
Gene_name :	<u>RFC1</u>
Protein_name :	<u>Replication factor C subunit 1</u>
Humangene_id :	<u>5981</u>
Humanswissprot_no :	<u>P35251</u>
Mousegene_id :	<u>19687</u>
Mouseswissprot_no :	<u>P35601</u>
Immunogen :	<u>Synthesized peptide derived from the Internal region of human RFC1.</u>
Specificity :	<u>RFC1 Polyclonal Antibody detects endogenous levels of RFC1 protein.</u>
Formulation :	<u>Liquid in PBS containing 50% glycerol, 0.5% BSA and 0.02% sodium azide.</u>
Source :	<u>Rabbit</u>
Dilution :	<u>Western Blot: 1/500 - 1/2000. ELISA: 1/20000. Not yet tested in other applications.</u>
Purification :	<u>The antibody was affinity-purified from rabbit antiserum by affinity-chromatography using epitope-specific immunogen.</u>
Concentration :	<u>1 mg/ml</u>
Storage_stability :	<u>-20°C/1 year</u>
Msds :	<u>MSDS_Antibody.pdf</u>
Other_name :	<u>RFC1; RFC140; Replication factor C subunit 1; Activator 1 140 kDa subunit; A1 140 kDa subunit; Activator 1 large subunit; Activator 1 subunit 1;DNA-binding protein PO-GA; Replication factor C 140 kDa subunit; RF-C 140 kDa subunit; RFC140; Replication factor C large subunit</u>
Molecular	<u>128KD</u>



Weight :

Product Images



Western Blot analysis of mouse liver, mouse kidney cells using RFC1 Polyclonal Antibody.. Secondary antibody was diluted at 1:20000 cells nucleus extracted by Minute TM Cytoplasmic and Nuclear Fractionation kit (SC-003, Invent biotech, MN, USA).