

Amphiphysin II Polyclonal Antibody

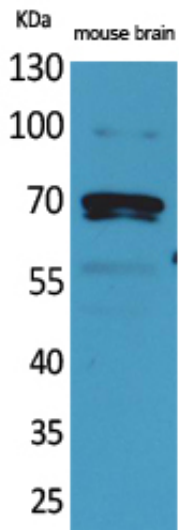
Catalog_no :	<u>AT5316</u>
Applications :	<u>WB,IHC-p,ELISA</u>
Reactivity :	<u>Human,Mouse,Rat</u>
Category :	<u>抗原抗体</u>
Size :	<u>100µg/50µg/20µg</u>
Gene_name :	<u>BIN1</u>
Protein_name :	<u>Myc box-dependent-interacting protein 1</u>
Humangene_id	<u>274</u>
:	<u></u>
Humanswissprot	<u>O00499</u>
_no :	<u></u>
Mousegene_id :	<u>30948</u>
Mouseswissprot	<u>O08539</u>
_no :	<u></u>
Ratgene_id :	<u>117028</u>
Ratswissprot_no	<u>O08839</u>
:	<u></u>
Immunogen :	<u>Synthesized peptide derived from the C-terminal region of human Amphiphysin II.</u>
Specificity :	<u>Amphiphysin II Polyclonal Antibody detects endogenous levels of Amphiphysin II protein.</u>
Formulation :	<u>Liquid in PBS containing 50% glycerol, 0.5% BSA and 0.02% sodium azide.</u>
Source :	<u>Rabbit</u>
Dilution :	<u>Western Blot: 1/500 - 1/2000. IHC-p: 1/100-1/300. ELISA: 1/20000. Not yet tested in other applications.</u>
Purification :	<u>The antibody was affinity-purified from rabbit antiserum by affinity-chromatography using epitope-specific immunogen.</u>
Concentration :	<u>1 mg/ml</u>
Storage_stability	<u>-20°C/1 year</u>
:	<u></u>
Msds :	<u>MSDS_Antibody.pdf</u>



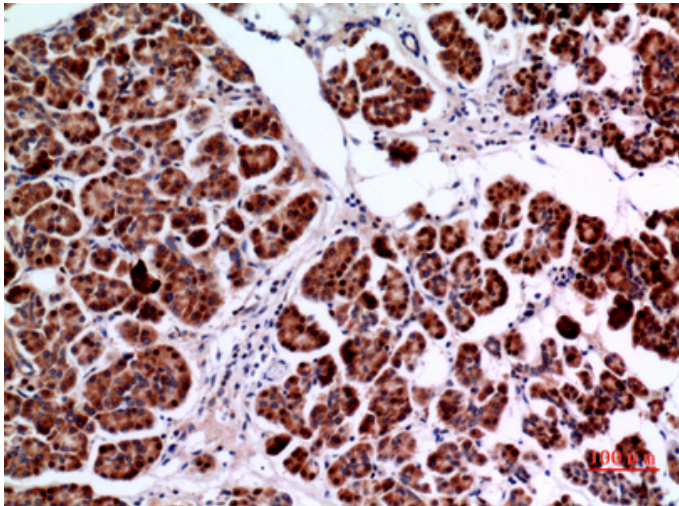
Other_name : BIN1; AMPHL; Myc box-dependent-interacting protein 1; Amphiphysin II; Amphiphysin-like protein; Box-dependent myc-interacting protein 1; Bridging integrator 1

Molecular Weight : 64KD

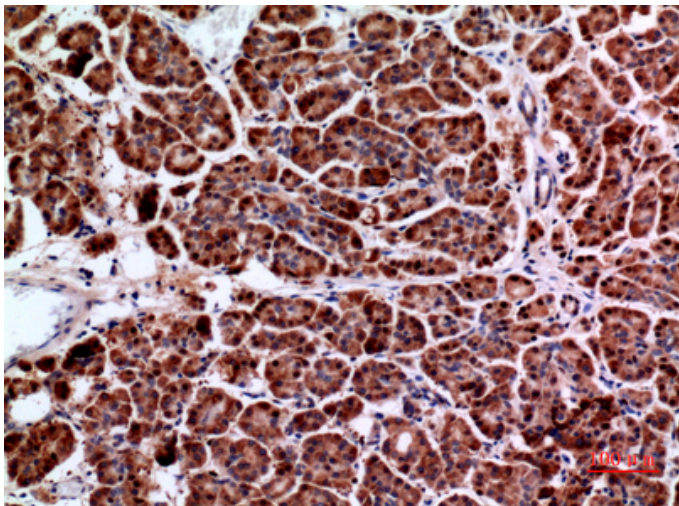
Product Images



Western Blot analysis of mouse brain cells using Amphiphysin II Polyclonal Antibody.. Secondary antibody was diluted at 1:20000

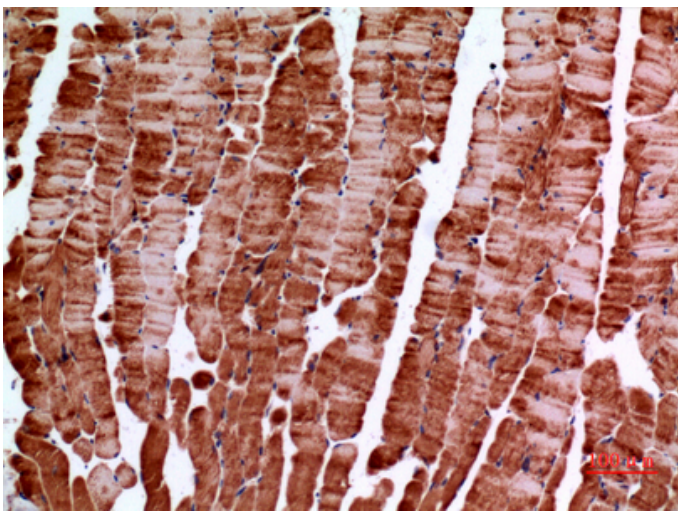
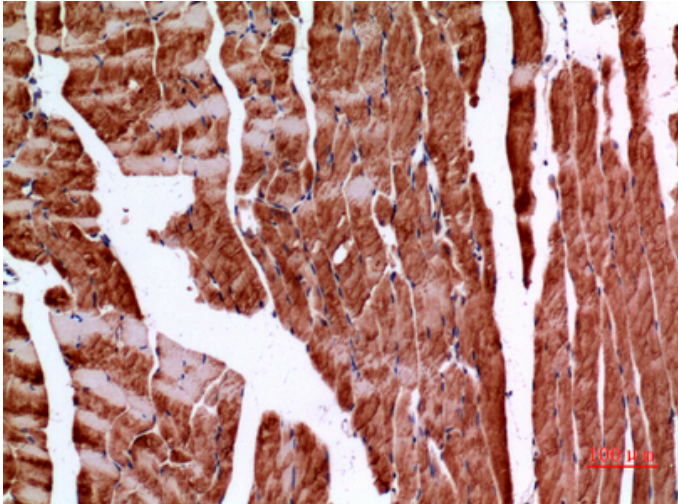


Immunohistochemical analysis of paraffin-embedded human-pancreas, antibody was diluted at 1:100



Immunohistochemical analysis of paraffin-embedded human-pancreas, antibody was diluted at 1:100

Immunohistochemical analysis of paraffin-embedded mouse-muscle, antibody was diluted at 1:100



Immunohistochemical analysis of paraffin-embedded mouse-muscle, antibody was diluted at 1:100