



GDI-2 Polyclonal Antibody

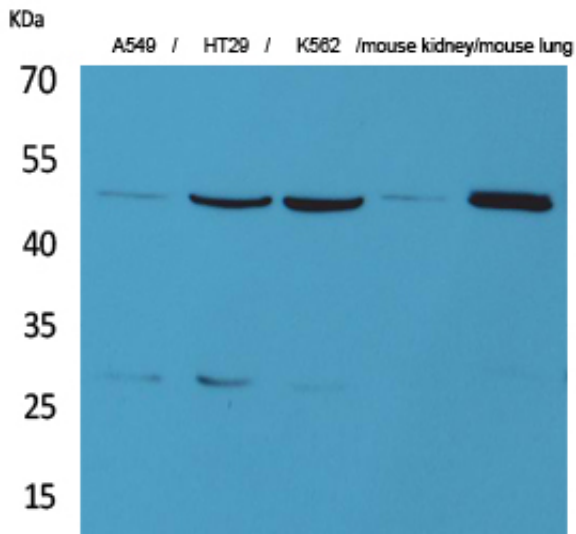
Catalog_no :	<u>AT5317</u>
Applications :	<u>WB,IHC-p,ELISA</u>
Reactivity :	<u>Human,Mouse,Rat</u>
Category :	<u>抗原抗体</u>
Size :	<u>100µg/50µg/20µg</u>
Gene_name :	<u>GDI2</u>
Protein_name :	<u>Rab GDP dissociation inhibitor beta</u>
Humangene_id :	<u>2665</u>
Humanswissprot_no :	<u>P50395</u>
Mousegene_id :	<u>14569</u>
Mouseswissprot_no :	<u>Q61598</u>
Ratgene_id :	<u>29662</u>
Ratswissprot_no :	<u>P50399</u>
Immunogen :	<u>Synthesized peptide derived from the C-terminal region of human GDI-2.</u>
Specificity :	<u>GDI-2 Polyclonal Antibody detects endogenous levels of GDI-2 protein.</u>
Formulation :	<u>Liquid in PBS containing 50% glycerol, 0.5% BSA and 0.02% sodium azide.</u>
Source :	<u>Rabbit</u>
Dilution :	<u>Western Blot: 1/500 - 1/2000. IHC-p: 1/100-1/300. ELISA: 1/20000. Not yet tested in other applications.</u>
Purification :	<u>The antibody was affinity-purified from rabbit antiserum by affinity-chromatography using epitope-specific immunogen.</u>
Concentration :	<u>1 mg/ml</u>
Storage_stability :	<u>-20°C/1 year</u>
Msds :	<u>MSDS_Antibody.pdf</u>



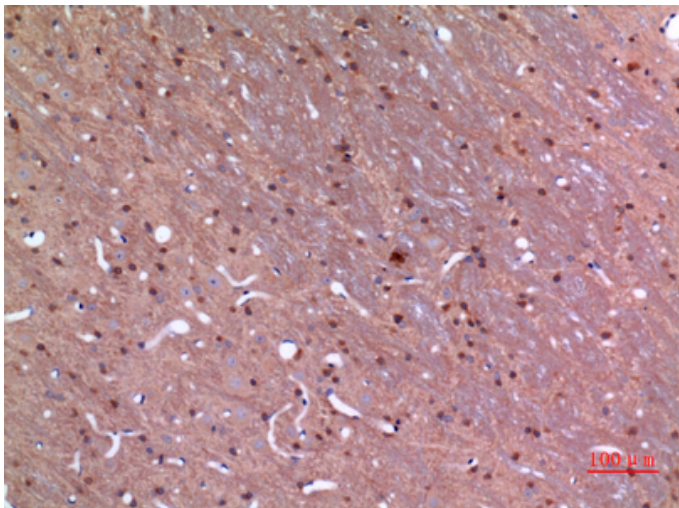
Other_name : GDI2; RABGDIB; Rab GDP dissociation inhibitor beta; Rab GDI beta; Guanosine diphosphate dissociation inhibitor 2; GDI-2

Molecular Weight : 50KD

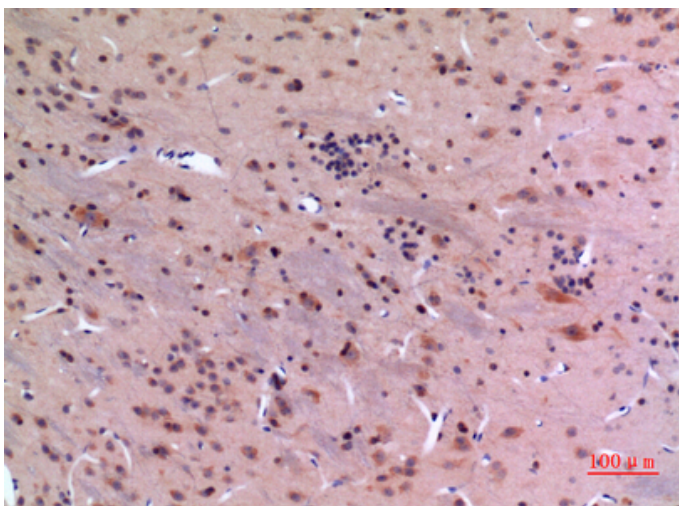
Product Images



Western Blot analysis of A549, HT29, K562, mouse kidney, mouse lung cells using GDI-2 Polyclonal Antibody.. Secondary antibody was diluted at 1:20000

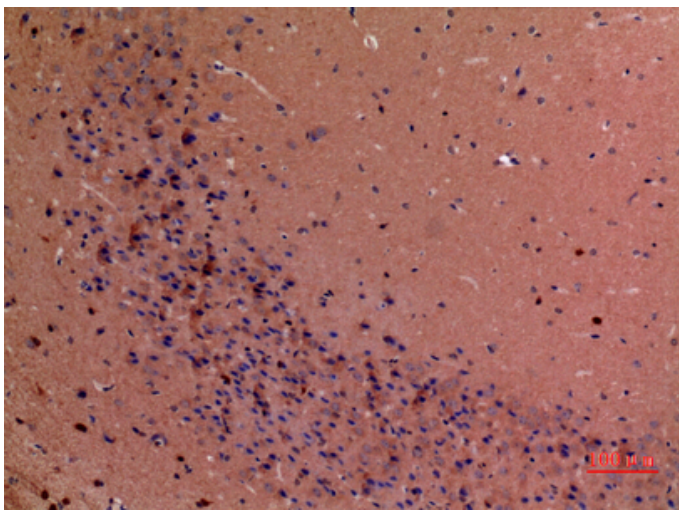
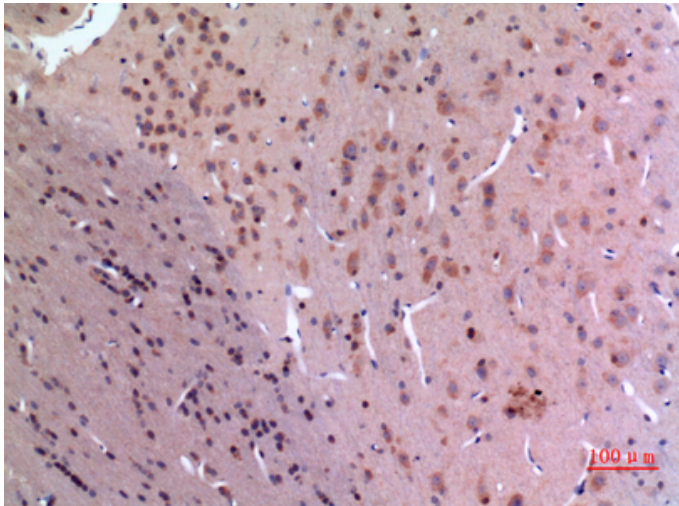


Immunohistochemical analysis of paraffin-embedded rat-brain, antibody was diluted at 1:100



Immunohistochemical analysis of paraffin-embedded rat-brain, antibody was diluted at 1:100

Immunohistochemical analysis of paraffin-embedded rat-brain, antibody was diluted at 1:100



Immunohistochemical analysis of paraffin-embedded mouse-brain, antibody was diluted at 1:100