

IDH3A Polyclonal Antibody

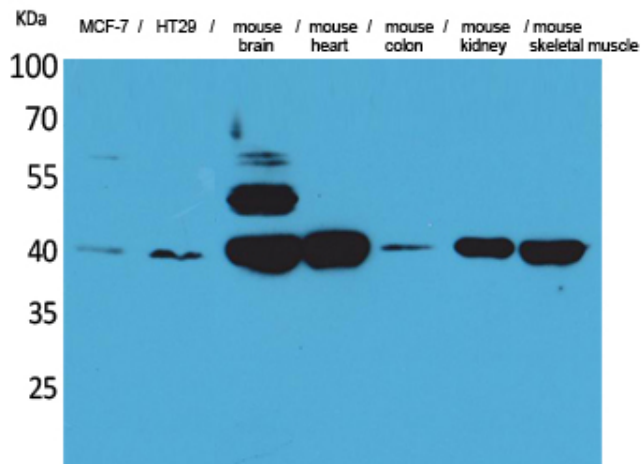
Catalog_no :	AT5318
Applications :	WB,IHC-p,ELISA
Reactivity :	Human,Mouse,Rat
Category :	抗原抗体
Size :	100µg/50µg/20µg
Gene_name :	IDH3A
Protein_name :	Isocitrate dehydrogenase [NAD] subunit alpha mitochondrial
Humangene_id :	3419
Humanswissprot_no :	P50213
Mousegene_id :	67834
Mouseswissprot_no :	Q9D6R2
Ratgene_id :	114096
Ratswissprot_no :	Q99NA5
Immunogen :	Synthesized peptide derived from the Internal region of human IDH3A.
Specificity :	IDH3A Polyclonal Antibody detects endogenous levels of IDH3A protein.
Formulation :	Liquid in PBS containing 50% glycerol, 0.5% BSA and 0.02% sodium azide.
Source :	Rabbit
Dilution :	Western Blot: 1/500 - 1/2000. IHC-p: 1/100-1/300. ELISA: 1/20000. Not yet tested in other applications.
Purification :	The antibody was affinity-purified from rabbit antiserum by affinity-chromatography using epitope-specific immunogen.
Concentration :	1 mg/ml
Storage_stability :	-20°C/1 year
Msds :	MSDS_Antibody.pdf



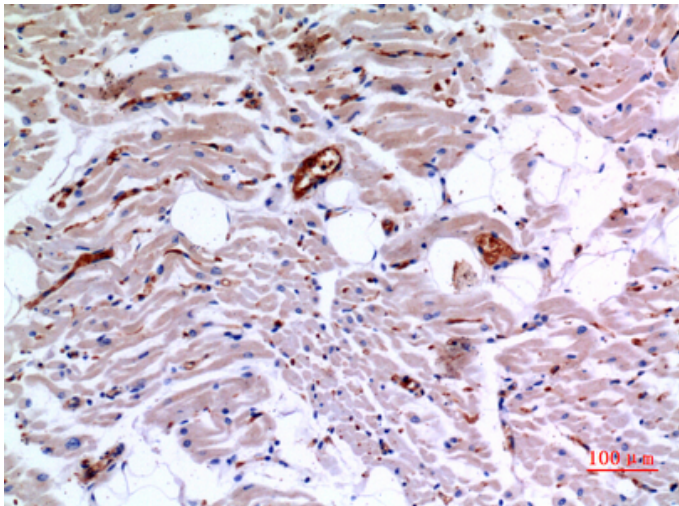
Other_name : IDH3A; Isocitrate dehydrogenase [NAD] subunit alpha, mitochondrial; Isocitric dehydrogenase subunit alpha; NAD(+)-specific ICDH subunit alpha

Molecular Weight : 39KD

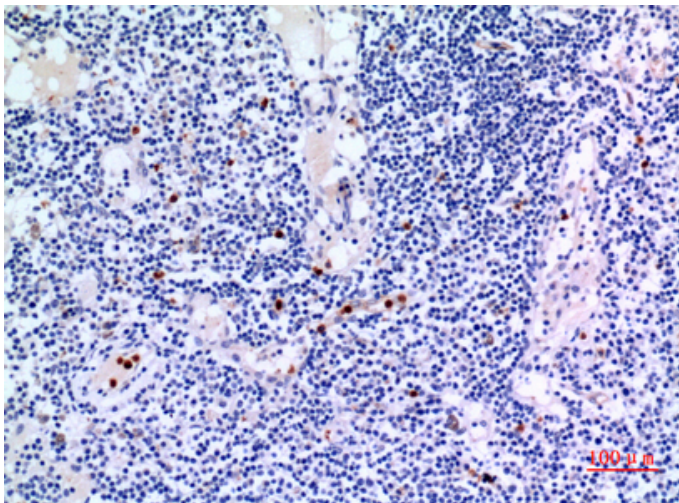
Product Images



Western Blot analysis of MCF-7, HT29, mouse brain, mouse heart, mouse colon, mouse kidney, mouse skeletal muscle cells using IDH3A Polyclonal Antibody.. Secondary antibody was diluted at 1:20000



Immunohistochemical analysis of paraffin-embedded human-心, antibody was diluted at 1:100



Immunohistochemical analysis of paraffin-embedded human-lymph-gland, antibody was diluted at 1:100