



## NUMB Polyclonal Antibody

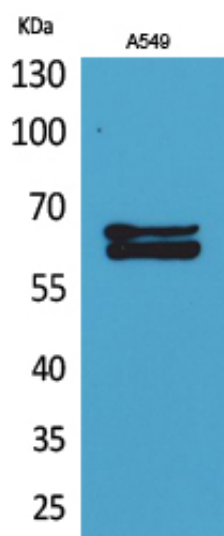
Catalog_no :	AT5320
Applications :	WB,ELISA
Reactivity :	Human,Mouse,Rat
Category :	抗原抗体
Size :	100µg/50µg/20µg
Gene_name :	NUMB
Protein_name :	Protein numb homolog
Humangene_id :	<a href="#">8650</a>
Humanswissprot_no :	<a href="#">P49757</a>
Mousegene_id :	<a href="#">18222</a>
Mouseswissprot_no :	<a href="#">Q9QZS3</a>
Ratswissprot_no :	<a href="#">Q2LC84</a>
Immunogen :	Synthesized peptide derived from the Internal region of human NUMB.
Specificity :	NUMB Polyclonal Antibody detects endogenous levels of NUMB protein.
Formulation :	Liquid in PBS containing 50% glycerol, 0.5% BSA and 0.02% sodium azide.
Source :	Rabbit
Dilution :	Western Blot: 1/500 - 1/2000. ELISA: 1/20000. Not yet tested in other applications.
Purification :	The antibody was affinity-purified from rabbit antiserum by affinity-chromatography using epitope-specific immunogen.
Concentration :	1 mg/ml
Storage_stability :	-20°C/1 year
Msds :	<a href="#">MSDS_Antibody.pdf</a>
Other_name :	NUMB; Protein numb homolog; h-Numb; Protein S171
Molecular	70KD



Weight :

---

## Product Images



Western Blot analysis of A549 cells using NUMB Polyclonal Antibody.. Secondary antibody was diluted at 1:20000