

## HSP 90 Polyclonal Antibody

Catalog_no :	<u>AT5327</u>
Applications :	<u>WB,IHC-p,ELISA</u>
Reactivity :	<u>Human,Mouse,Rat</u>
Category :	<u>抗原抗体</u>
Size :	<u>100µg/50µg/20µg</u>
Gene_name :	<u>HSP90AA1/HSP90AB1</u>
Protein_name :	<u>Heat shock protein HSP 90-alpha/Heat shock protein HSP 90-beta</u>
Humangene_id :	<u><a href="#">3326</a></u>
Humanswissprot_no :	<u><a href="#">P07900</a></u>
Mousegene_id :	<u><a href="#">15519</a></u>
Mouseswissprot_no :	<u><a href="#">P07901</a></u>
Ratgene_id :	<u><a href="#">299331</a></u>
Ratswissprot_no :	<u><a href="#">P82995</a></u>
Immunogen :	<u>The antiserum was produced against synthesized peptide derived from human HSP90A/B around the non-acetylation site of Lys292/284. AA range:251-300</u>
Specificity :	<u>HSP 90 Polyclonal Antibody detects endogenous levels of HSP 90 protein.</u>
Formulation :	<u>Liquid in PBS containing 50% glycerol, 0.5% BSA and 0.02% sodium azide.</u>
Source :	<u>Rabbit</u>
Dilution :	<u>Western Blot: 1/500 - 1/2000. IHC-p: 1/100-1/300. ELISA: 1/20000. Not yet tested in other applications.</u>
Purification :	<u>The antibody was affinity-purified from rabbit antiserum by affinity-chromatography using epitope-specific immunogen.</u>
Concentration :	<u>1 mg/ml</u>
Storage_stability :	<u>-20°C/1 year</u>
Msds :	<u>MSDS_Antibody.pdf</u>



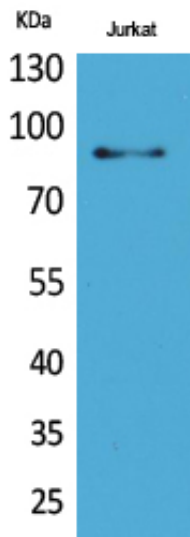
Other\_name : HSP90AA1; HSP90A; HSPC1; HSPCA; Heat shock protein HSP 90-alpha; Heat shock 86 kDa; HSP 86; HSP86; Renal carcinoma antigen NY-REN-38; HSP90AB1; HSP90B; HSPC2; HSPCB; Heat shock protein HSP 90-beta; HSP 90; Heat shock 84 kDa; HSP 84; HSP84

---

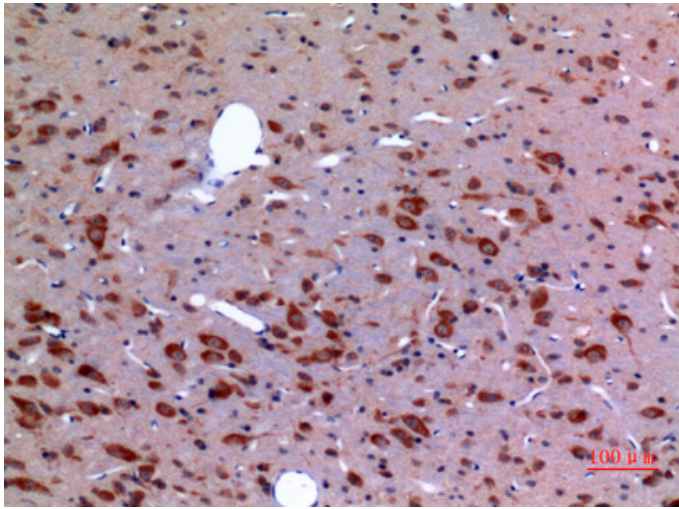
Molecular Weight : 85KD

---

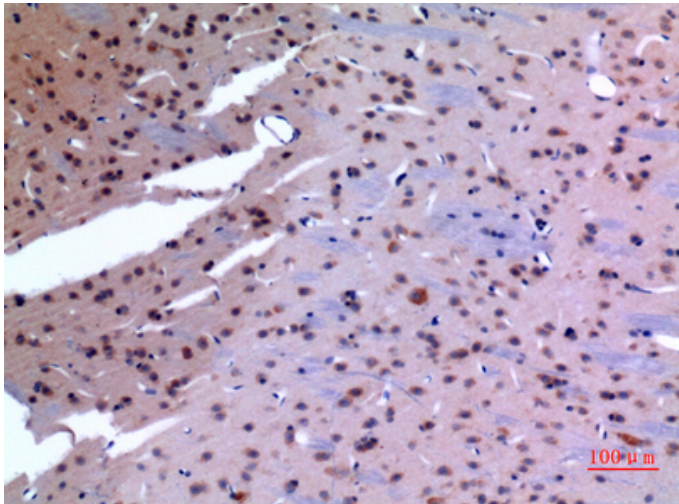
## Product Images



Western Blot analysis of Jurkat cells using HSP 90 Polyclonal Antibody.. Secondary antibody was diluted at 1:20000

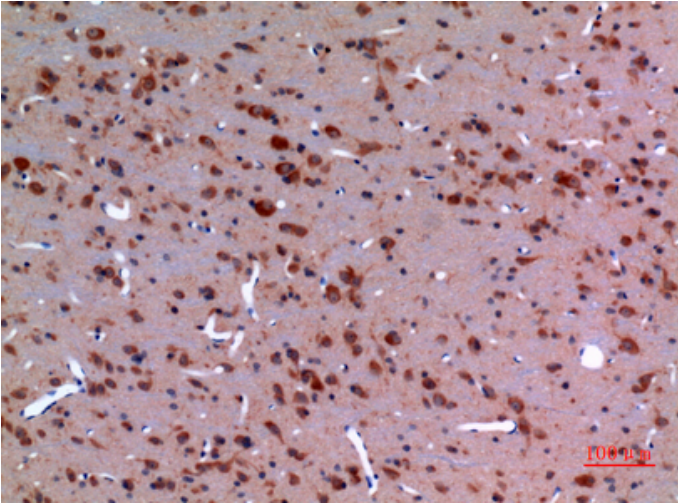


Immunohistochemical analysis of paraffin-embedded rat-brain, antibody was diluted at 1:100

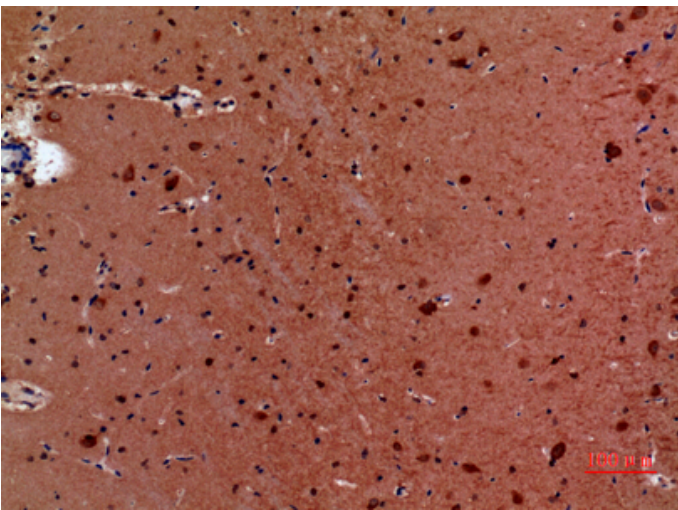


Immunohistochemical analysis of paraffin-embedded rat-brain, antibody was diluted at 1:100

Immunohistochemical analysis of paraffin-embedded rat-brain, antibody was diluted at 1:100



Immunohistochemical analysis of paraffin-embedded mouse-brain, antibody was diluted at 1:100



Immunohistochemical analysis of paraffin-embedded mouse-brain, antibody was diluted at 1:100

