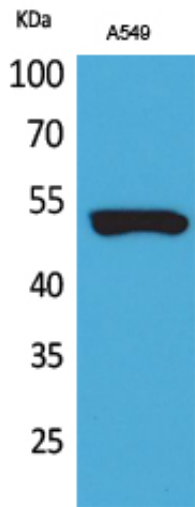


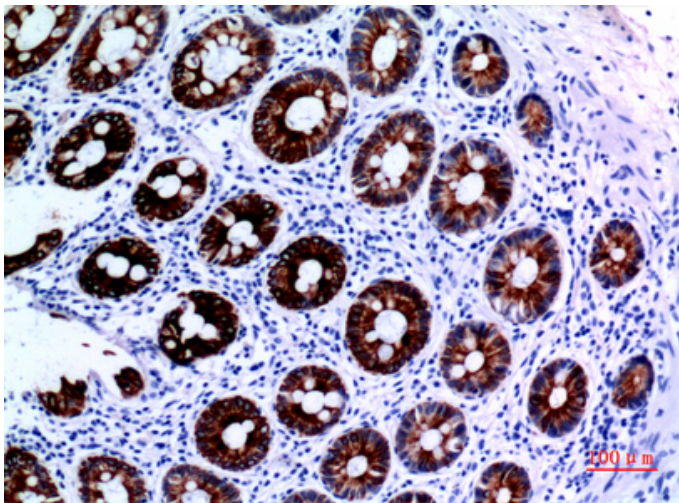
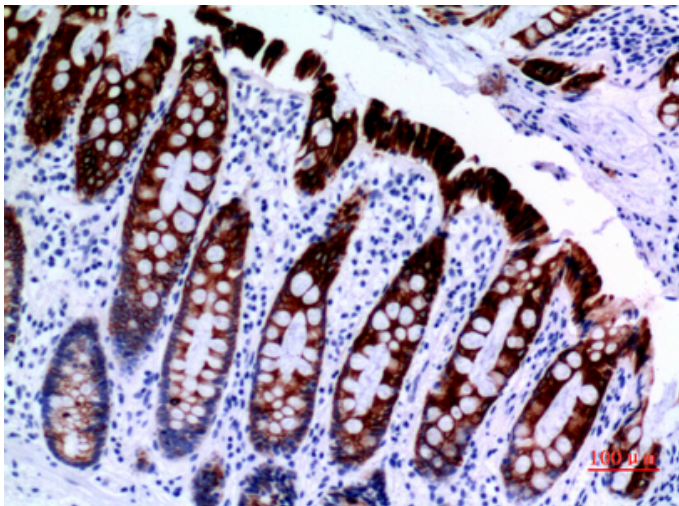
Cytokeratin 8 Polyclonal Antibody

Catalog_no :	AT5328
Applications :	WB,IHC-p,ELISA
Reactivity :	Human
Category :	抗原抗体
Size :	100µg/50µg/20µg
Gene_name :	KRT8
Protein_name :	Keratin type II cytoskeletal 8
Humangene_id :	3856
Humanswissprot_no :	P05787
Immunogen :	The antiserum was produced against synthesized peptide derived from human K8 around the non-acetylation site of Lys483. AA range:434-483
Specificity :	Cytokeratin 8 Polyclonal Antibody detects endogenous levels of Cytokeratin 8 protein.
Formulation :	Liquid in PBS containing 50% glycerol, 0.5% BSA and 0.02% sodium azide.
Source :	Rabbit
Dilution :	Western Blot: 1/500 - 1/2000. IHC-p: 1/100-1/300. ELISA: 1/20000. Not yet tested in other applications.
Purification :	The antibody was affinity-purified from rabbit antiserum by affinity-chromatography using epitope-specific immunogen.
Concentration :	1 mg/ml
Storage_stability :	-20°C/1 year
Msds :	MSDS_Antibody.pdf
Other_name :	KRT8; CYK8; Keratin, type II cytoskeletal 8; Cytokeratin-8; CK-8; Keratin-8; K8; Type-II keratin Kb8
Molecular Weight :	53KD

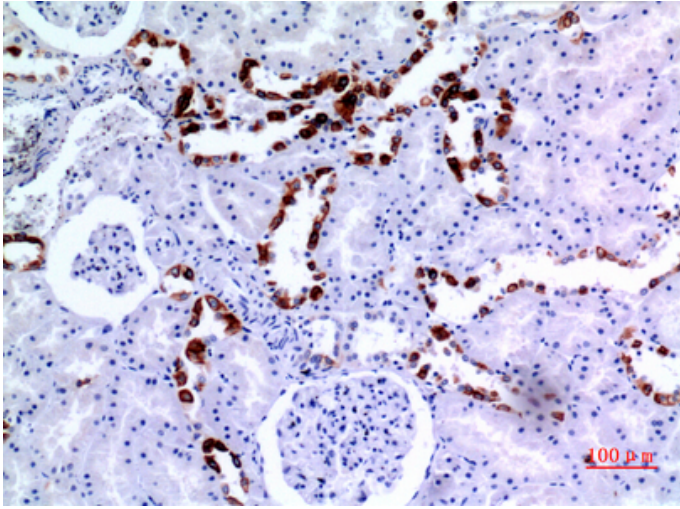
Product Images



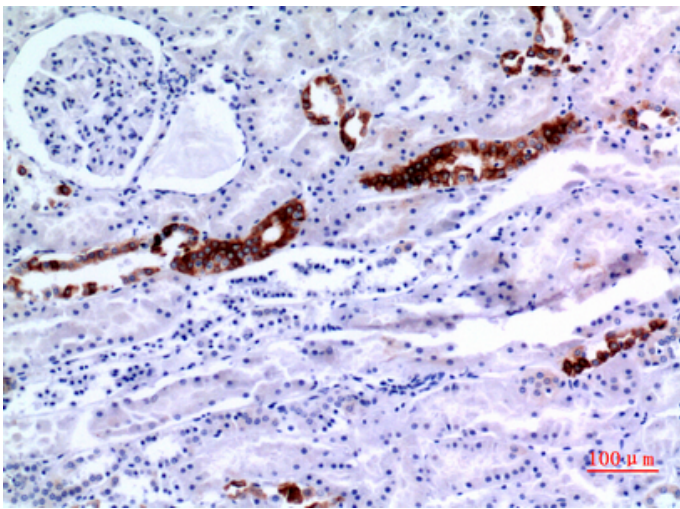
Western Blot analysis of A549 cells using Cytokeratin 8 Polyclonal Antibody.. Secondary antibody was diluted at 1:20000



Immunohistochemical analysis of paraffin-embedded human-kidney, antibody was diluted at 1:100



Immunohistochemical analysis of paraffin-embedded human-kidney, antibody was diluted at 1:100



Immunohistochemical analysis of paraffin-embedded human-kidney, antibody was diluted at 1:100

