

Keratin-pan Polyclonal Antibody

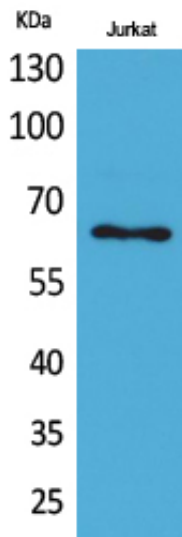
Catalog_no :	<u>AT5329</u>
Applications :	<u>WB,IHC-p,ELISA</u>
Reactivity :	<u>Human,Mouse,Rat</u>
Category :	<u>抗原抗体</u>
Size :	<u>100µg/50µg/20µg</u>
Gene_name :	<u>KRT2</u>
Protein_name :	<u>Keratin, type II cytoskeletal 2 epidermal</u>
Humangene_id :	<u>3849</u>
Humanswissprot_no :	<u>P35908</u>
Mousegene_id :	<u>16681</u>
Mouseswissprot_no :	<u>Q3TTY5</u>
Ratgene_id :	<u>406228</u>
Ratswissprot_no :	<u>Q6IG02</u>
Immunogen :	<u>The antiserum was produced against synthesized peptide derived from human Keratin around the non-acetylation site of Lys185 AND OTHERS. AA range:151-200</u>
Specificity :	<u>Keratin-pan Polyclonal Antibody detects endogenous levels of Keratin-pan protein.</u>
Formulation :	<u>Liquid in PBS containing 50% glycerol, 0.5% BSA and 0.02% sodium azide.</u>
Source :	<u>Rabbit</u>
Dilution :	<u>Western Blot: 1/500 - 1/2000. IHC-p: 1/100-1/300. ELISA: 1/20000. Not yet tested in other applications.</u>
Purification :	<u>The antibody was affinity-purified from rabbit antiserum by affinity-chromatography using epitope-specific immunogen.</u>
Concentration :	<u>1 mg/ml</u>
Storage_stability :	<u>-20°C/1 year</u>
Msds :	<u>MSDS_Antibody.pdf</u>



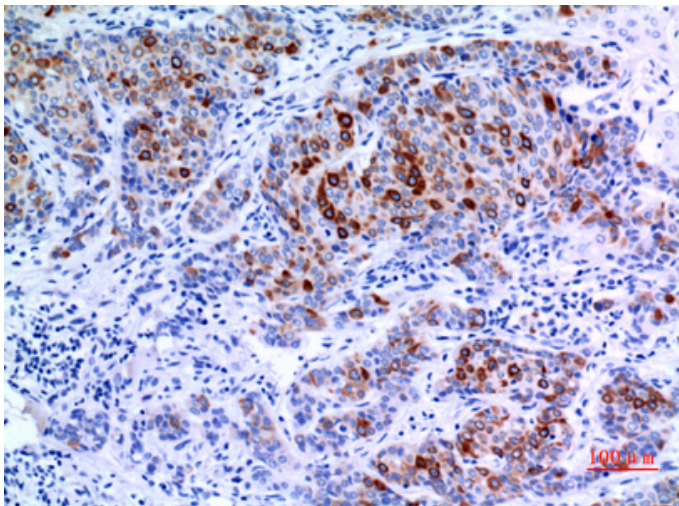
Other_name : KRT2; KRT76; KRT3; KRT5; KRT6A; KRT6B; KRT6C; KRT71; KRT72; KRT73; KRT74; KRT75; KRT79; KRT8; KRT84; Keratin, type II cytoskeletal 2 epidermal; Keratin, type II cytoskeletal 2 oral; Keratin, type II cytoskeletal 3; Keratin, type II cytoskeletal 5; Keratin, type II cytoskeletal 6A; Keratin, type II cytoskeletal 6B; Keratin, type II cytoskeletal 6C; Keratin, type II cytoskeletal 71; Keratin, type II cytoskeletal 72; Keratin, type II cytoskeletal 73; Keratin, type II cytoskeletal 74;

Molecular Weight : 65KD

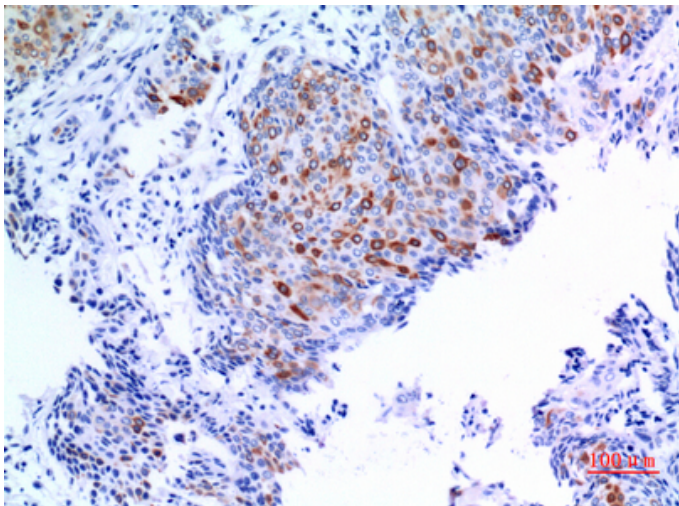
Product Images



Western Blot analysis of Jurkat cells using Keratin-pan Polyclonal Antibody.. Secondary antibody was diluted at 1:20000



Immunohistochemical analysis of paraffin-embedded human-mammary-cancer, antibody was diluted at 1:100



Immunohistochemical analysis of paraffin-embedded human-mammary-cancer, antibody was diluted at 1:100

Immunohistochemical analysis of paraffin-embedded human-mammary-cancer, antibody was diluted at 1:100

