

Tubulin  $\alpha$  Polyclonal Antibody

Catalog_no :	<u>AT5345</u>
Applications :	<u>WB,IHC-p,ELISA</u>
Reactivity :	<u>Human,Mouse,Rat</u>
Category :	<u>抗原抗体</u>
Size :	<u>100<math>\mu</math>g/50<math>\mu</math>g/20<math>\mu</math>g</u>
Gene_name :	<u>TUBA1A/TUBA1B/TUBA1C/TUBA3C/TUBA4A</u>
Protein_name :	<u>Tubulin alpha-1A chain/Tubulin alpha-1B chain/Tubulin alpha-1C chain/Tubulin alpha-3C/D chain/Tubulin alpha-4A chain</u>
Humangene_id :	<u><a href="#">7846</a></u>
Humanswissprot_no :	<u><a href="#">Q71U36</a></u>
Mousegene_id :	<u><a href="#">22142</a></u>
Mouseswissprot_no :	<u><a href="#">P68369</a></u>
Ratgene_id :	<u><a href="#">64158</a></u>
Ratswissprot_no :	<u><a href="#">P68370</a></u>
Immunogen :	<u>The antiserum was produced against synthesized peptide derived from human TUBA1A around the non-acetylation site of Lys40. AA range:1-50</u>
Specificity :	<u>Tubulin <math>\alpha</math> Polyclonal Antibody detects endogenous levels of Tubulin <math>\alpha</math> protein.</u>
Formulation :	<u>Liquid in PBS containing 50% glycerol, 0.5% BSA and 0.02% sodium azide.</u>
Source :	<u>Rabbit</u>
Dilution :	<u>Western Blot: 1/500 - 1/2000. IHC-p: 1/100-1/300. ELISA: 1/20000. Not yet tested in other applications.</u>
Purification :	<u>The antibody was affinity-purified from rabbit antiserum by affinity-chromatography using epitope-specific immunogen.</u>
Concentration :	<u>1 mg/ml</u>
Storage_stability :	<u>-20°C/1 year</u>

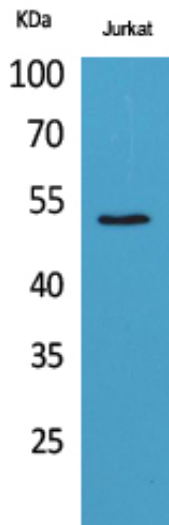


MsdS : [MSDS\\_Antibody.pdf](#)

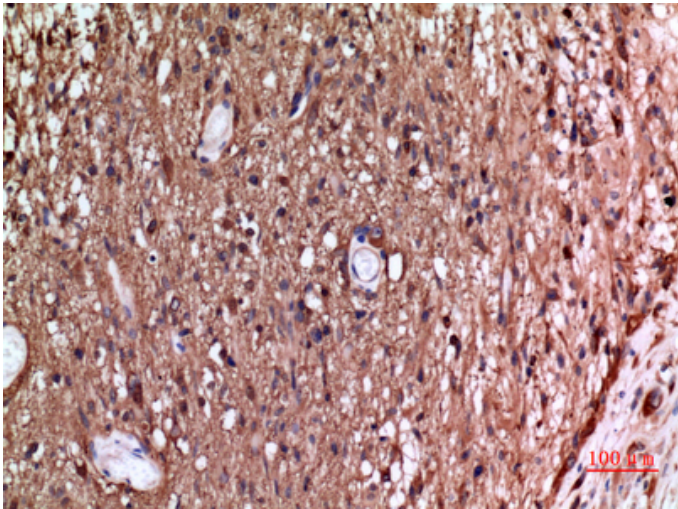
Other\_name : TUBA1A; TUBA3; Tubulin alpha-1A chain; Alpha-tubulin 3; Tubulin B-alpha-1; Tubulin alpha-3 chain; TUBA1B; Tubulin alpha-1B chain; Alpha-tubulin ubiquitous; Tubulin K-alpha-1; Tubulin alpha-ubiquitous chain; TUBA1C; TUBA6;Tubulin alpha-1C chain; Alpha-tubulin 6; Tubulin alpha-6 chain; TUBA3C; TUBA2; TUBA3D; Tubulin alpha-3C/D chain; Alpha-tubulin 2; Alpha-tubulin 3C/D; Tubulin alpha-2 chain; TUBA4A; TUBA1; Tubulin alpha-4A chain; Alpha-tubulin 1;

Molecular Weight : 50KD

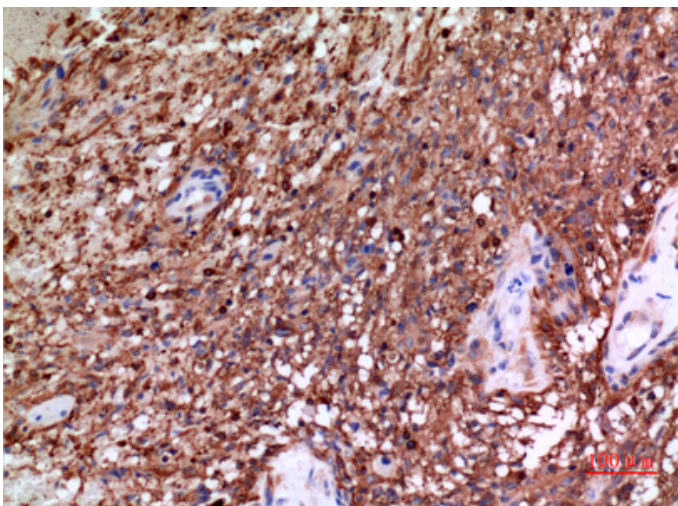
## Product Images



Western Blot analysis of Jurkat cells using Tubulin  $\alpha$  Polyclonal Antibody. Antibody was diluted at 1:1000. Secondary antibody was diluted at 1:20000



Immunohistochemical analysis of paraffin-embedded human-brain, antibody was diluted at 1:100



Immunohistochemical analysis of paraffin-embedded human-brain, antibody was diluted at 1:100