



CD10 Polyclonal Antibody

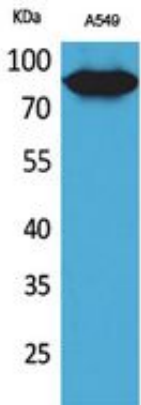
Catalog_no :	AT5350
Applications :	WB,IHC-p,ELISA
Reactivity :	Human,Mouse,Rat
Category :	抗原抗体
Size :	100µg/50µg/20µg
Gene_name :	MME
Protein_name :	Neprilysin
Humangene_id :	4311
Humanswissprot_no :	P08473
Mousegene_id :	17380
Mouseswissprot_no :	Q61391
Ratgene_id :	24590
Ratswissprot_no :	P07861
Immunogen :	The antiserum was produced against synthesized peptide derived from the Internal region of human MME. AA range:491-540
Specificity :	CD10 Polyclonal Antibody detects endogenous levels of CD10 protein.
Formulation :	Liquid in PBS containing 50% glycerol, 0.5% BSA and 0.02% sodium azide.
Source :	Rabbit
Dilution :	Western Blot: 1/500 - 1/2000. IHC-p: 1/100-1/300. ELISA: 1/20000. Not yet tested in other applications.
Purification :	The antibody was affinity-purified from rabbit antiserum by affinity-chromatography using epitope-specific immunogen.
Concentration :	1 mg/ml
Storage_stability :	-20°C/1 year
Msds :	MSDS_Antibody.pdf



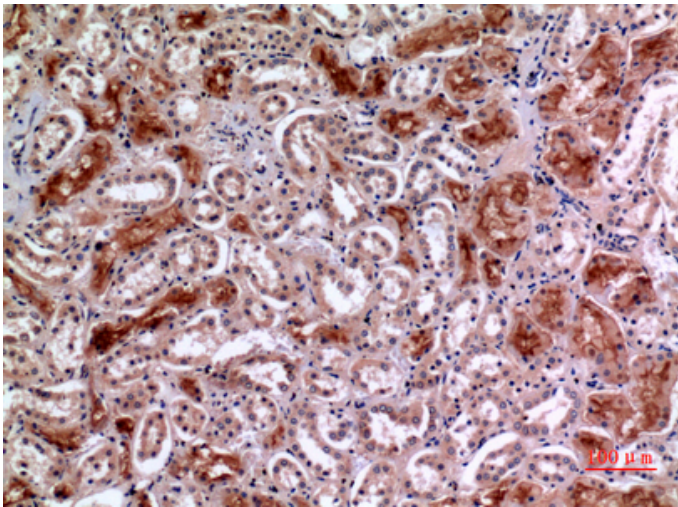
Other_name : MME; EPN; Neprilysin; Atriopeptidase; Common acute lymphocytic leukemia antigen; CALLA; Enkephalinase; Neutral endopeptidase 24.11; NEP; Neutral endopeptidase; Skin fibroblast elastase; SFE; CD10

Molecular Weight : 85KD

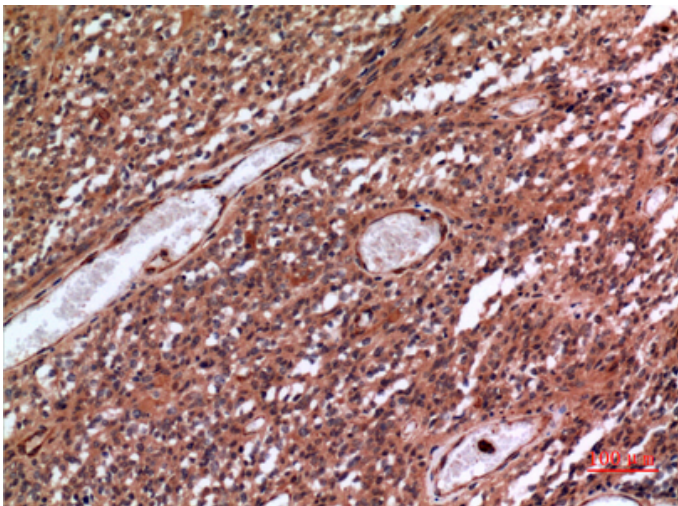
Product Images



Western Blot analysis of A549 cells using CD10 Polyclonal Antibody.. Secondary antibody was diluted at 1:20000



Immunohistochemical analysis of paraffin-embedded human-kidney, antibody was diluted at 1:100



Immunohistochemical analysis of paraffin-embedded human-brain, antibody was diluted at 1:100